



WATTEN HOUSE

世
代
传
承

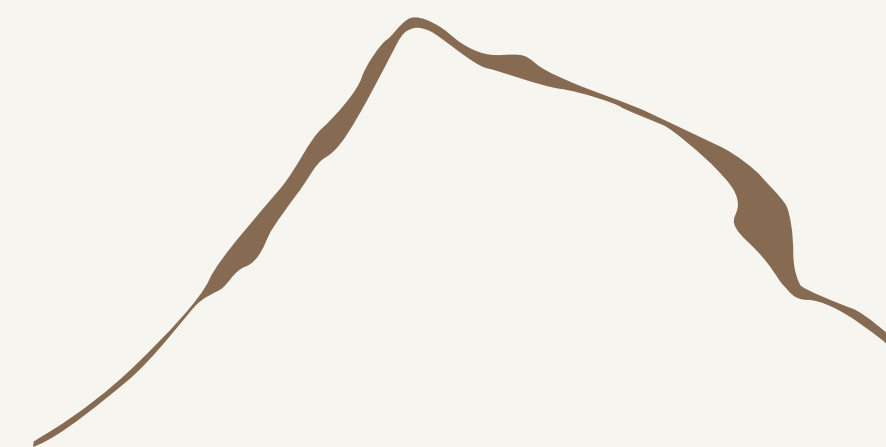
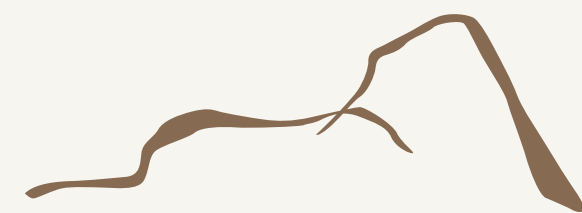
Make Your Legacy An Endearing Masterpiece



Every man's life is a branch of the family tree, seen as a growth or a continuance, in which he plays a part or a chapter in the family history, bringing upon glory to the family life.

BASED ON LIN YUTANG'S IDEAS FROM "THE CHINESE FAMILY IDEAL"

Perched atop a verdant hill, Watten House is not just a house, it is a legacy that is built on the foundation of a lifetime of values and choices. A freehold collection of 180 peerless masterpieces with timeless design that is steeped in Asian sensibilities, Watten House is specially created for those who aspire to the highest levels of living.





Artist's Impression



NASSIM PARK RESIDENCES



WATTEN HOUSE

MEYER HOUSE



Luxury Masterpieces

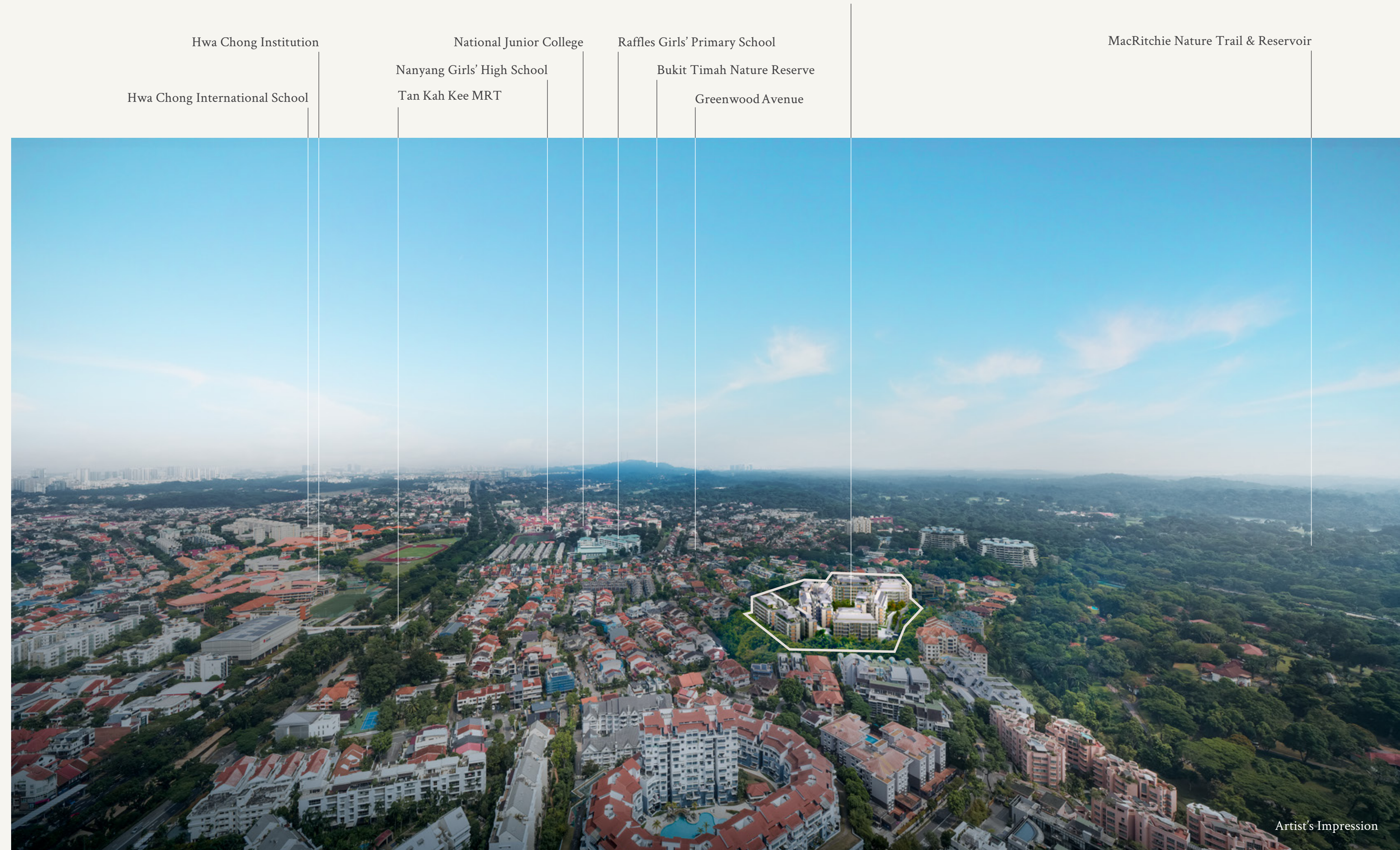
UOL Group Limited's freehold luxury masterpiece collection is a continual evolution. From 'Luxury Living by Botanic Gardens' at Nassim Park Residences to 'Mansion in the Park' at Meyer House, and now "Tranquillity on the Hill" at Watten House, each project represents a new chapter in UOL's luxury journey, capitalising on what nature has to offer.

The Crown of Watten Estate

Prestigious Watten Estate is one of Singapore's most sought-after addresses, surrounded by 33 out of Singapore's 39 Good Class Bungalow Areas*, abundant nature, a renowned education belt, vibrant lifestyle amenities, as well as delectable food and culture.



WATTEN HOUSE



*Within 3km radius

Artist's Impression



Legacy.

How is it built? Not in a day, nor by chance.
But through the perpetual march of moments,
memories and milestones.

By holding steadfast to our values and choosing
the right path, we write the story of our future,
in the very present.

Legacy is built by preserving the heart of family.
A timeless home to gather and grow relationships
with whom we love.

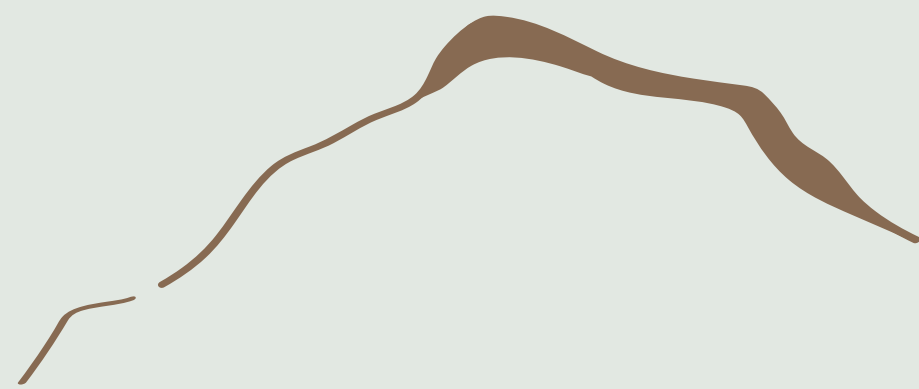
An endless retreat to uncover the depths of our
very selves. An ageless sanctuary to be at one with
the world around us.

永
恒
经
典

THE ARCHITECTURE

A House of Timelessness

The design of Watten House imbues it with a sense of elegance and timelessness. From the impeccable sense of arrival to the classical proportions of the architecture and the deliberate design of the pitched roofs, the combination of classic architectural elements and modern design features creates a palatial home that is timeless, contemporary, and poised.



An Impeccable Arrival

Like a masterpiece framed with greenery, Watten House welcomes you into a private and poetic world. A sprawling 220,240 sqft grounds with only 180 exclusive units, offering low-density living in a tranquil setting.





A Scenic Sanctuary

Make your home in a sensorial oasis that is inviting and idyllic; breathtaking and life-giving.

浑
然
天
成

THE LANDSCAPE

At Home with Nature

At Watten House, nature is more than just a scenic backdrop; it is an intrinsic part of daily life that nourishes every aspect of wellness. The timeless architecture and landscape harmonise seamlessly to create an oasis of serenity, a haven that relaxes and revitalises. The lush greenery that nestles the pool and courtyard invites you to immerse yourself in the verdant surroundings. With each passing day, your communion with nature grounds you firmly in the present moment and uplifts your spirits.





Arrival Water Cascades

Painterly landscapes invite contemplation and reflection, where the timeless presence of the rocks finds harmony in the ever-shifting beauty of nature.

Artist's Impression

Waters of Tranquillity

As day turns to dusk, unwind in the cool waters of the 50m lap pool or simply lounge beneath the gently swaying canopy, watching the sky transform into a canvas of vibrant hues, and savouring the tranquillity of a perfect evening.





Moments of Respite

Linger at the reading pavilion for a moment of rest and quietude, losing yourself in a book and discovering pockets of clarity amidst the lush flora.

Harmony of Senses

Nature and man-made elements blend harmoniously throughout the landscape. Observe the gentle flow of water cascade down organically shaped ponds, while the rustling leaves and the symphony of birdsong create an enchanting ambience.





Artist's Impression

Spring of Wellness

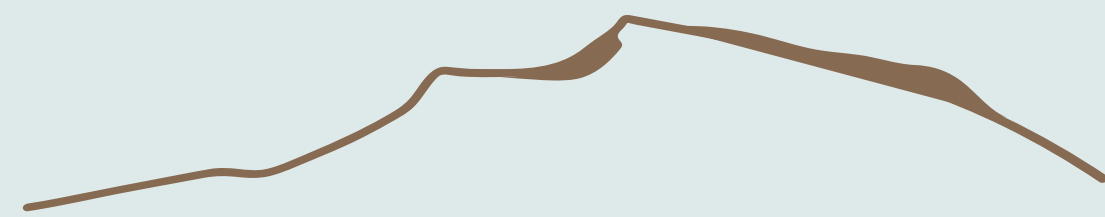
Meander through serene gardens, winding trails, courtyards, and flowing water features that seamlessly blend into a tapestry of wellness spaces. From the gym, look out to a stunning view of the terrace falls, and let the beauty of nature enrich your journey to well-being.

和
谐
关
爱

THE ESTATE

Harmony Within and Beyond

The sense of home extends beyond Watten House to the surrounding estate. There is harmony with people and place, forged by a community that is warm and welcoming. The laughter of children playing in the neighbourhood park resonates in the air and familiar faces return your smile as you walk your dog along the tree-lined roads. It is this tapestry of human connection that makes Watten House a home unlike any other.





Artist's Impression

An Address of Legacy



- EDUCATION BELT**
SCHOOLS WITHIN 1KM RADIUS
 Raffles Girls' Primary School
 National Junior College
 Nanyang Primary School
 St. Margaret's School (Secondary)
 Hwa Chong Institution
 Nanyang Girls' High School

- SCHOOLS WITHIN 10 MINS DRIVE**
 Hwa Chong International School
 Singapore Chinese Girls' School
 NUS Bukit Timah Campus
 St. Joseph's Institution
 Anglo-Chinese School (Primary School)
 Anglo-Chinese School (Barker Road)
 Methodist Girls' School (Primary & Secondary)
 Henry Park Primary School
 Swiss School in Singapore
 Holland International School
 Chatsworth International School
 Singapore Korean International School



- CONNECTIVITY**
WITHIN 8 MINS WALK
 Tan Kah Kee MRT



- LEISURE & DINING**
 Singapore Island Country Club (Bukit Location)
 Keppel Club
 Raffles Town Club
 The Tanglin Club
 The American Club
 The British Club
 Swiss Club
 The Japanese Association Singapore
 Hollandse Club
 Coronation Shopping Plaza
 Crown Centre
 King's Arcade Shopping Centre
 Cluny Court
 Guthrie House
 Serene Centre
 Orchard Road shopping belt
 Greenwood Avenue
 Holland Village
 Dempsey Hill



- NATURE**
 Singapore Botanic Gardens (UNESCO World Heritage Site)
 Jacob Ballas Children's Garden
 MacRitchie Nature Trail & Reservoir
 Bukit Timah Nature Reserve

Map is not drawn to scale. All distances and travelling times are approximates only.



Renowned Education Belt

With their rich legacy, Nanyang Primary School, Raffles Girls' Primary School, Nanyang Girls' High School, Hwa Chong Institution and National Junior College are part of the renowned education belt located within 1km radius of Watten House.



HWA CHONG INSTITUTION

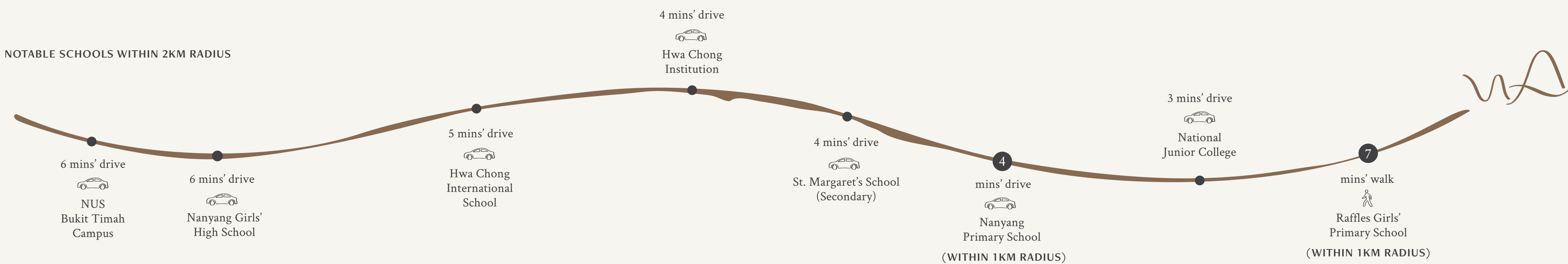


RAFFLES GIRLS' PRIMARY SCHOOL



NANYANG PRIMARY SCHOOL

NOTABLE SCHOOLS WITHIN 2KM RADIUS



All distances and travelling times are approximates only and taken from Watten House to respective destinations.

宜
家
宜
人

THE INTERIORS

The Heart of Family

Family, the foundation of life, lies at the very heart of Watten House. The rare, large format residences are generously designed to provide ample space for everyone to enjoy privacy and quiet solitude, while also enabling the family to come together and bond over shared activities and conversations. The well-balanced and thoughtful layout is a testament to the importance of family. Watten House is more than just a house – it is an artfully crafted masterpiece that fosters a sense of togetherness, strengthens familial ties, and creates eternal memories.





Artist's Impression

Site Plan

CURATED FACILITIES

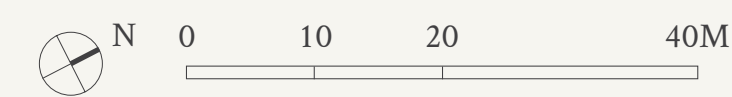
Watten House's unique landscaping takes advantage of the elevated and undulating site to create painterly gardens and cascading ponds for residents to enjoy. Nestled amidst lush nature, a thoughtfully curated suite of facilities invites residents to unwind and recharge.

- | | |
|--------------------------|-------------------------|
| 1 Arrival Lounge | 14 Breeze Walk |
| 2 Arrival Terrace | 15 Garden Courtyard |
| 3 Arrival Water Cascades | 16 Rain Dance |
| 4 Concierge* | 17 Garden of Dimensions |
| 5 Sun Deck | 18 The Gym* |
| 6 Sakura Pool Foyer | 19 Reading Pavilion |
| 7 Jacuzzi Pool | 20 Function Room* |
| 8 50m Lap Pool | 21 Terrace Falls |
| 9 Poolside Lounge | 22 Aqua Gym |
| 10 Spa Pool | 23 Reflective Pond |
| 11 Tsubaki Pool Foyer | 24 Sunshine Play |
| 12 Aqua Lounge | 25 Wellness Pool |
| 13 Cascading Pond | |

OTHER FACILITIES

- | | |
|---------------------------|----------------------|
| 26 Guard House | 31 Bicycle Bay* |
| 27 Pedestrian Gate | 32 Bin Centre* |
| 28 Electrical Substation* | VS Ventilation Shaft |
| 29 Management Office* | □ Water Tank at Roof |
| 30 Genset* | |

*Located at Basement



BP NO.: A2091-00567-2022-BP01 DATED 09/10/2023



Artist's Impression

Choice Units

36 SHELFORD ROAD, SINGAPORE 288429

| Floor \ Unit | 01 | 02 | 03 | 04 | 05 |
|--------------|---------|--------------------|---------|--------|--------|
| Attic | PH1 | Communal Landscape | | | |
| 05 | | D1 | CS6 | C1 | C2 |
| 04 | D1 | D1 | CS6 | C1 | C2 |
| 03 | D1 | D1 | CS6 | C1 | C2 |
| 02 | D1 | D1 | CS6 | C1 | C2 |
| 01 | D1(p2) | D1(p2) | CS6(p1) | C1(p1) | C2(p1) |
| B1 | Carpark | | | | |

38 SHELFORD ROAD, SINGAPORE 288431

| Floor \ Unit | 06 | 07 | 08 | 09 |
|--------------|--------------------|---------|--------|--------|
| Attic | Communal Landscape | | | PH2 |
| 05 | CS2 | CS1 | D2 | |
| 04 | CS2 | CS1 | D2 | D2 |
| 03 | CS2 | CS1 | D2 | D2 |
| 02 | CS2 | CS1 | D2 | D2 |
| 01 | CS2(p1) | CS1(p1) | D2(p1) | D2(p1) |
| B1 | Carpark | | | |

44 SHELFORD ROAD, SINGAPORE 288437

| Floor \ Unit | 19 | 20 | 21 | 22 |
|--------------|--------------------|---------|--------|--------|
| Attic | Communal Landscape | | PH2 | |
| 05 | CS2 | CS1 | | D2 |
| 04 | CS2 | CS1 | D2 | D2 |
| 03 | CS2 | CS1 | D2 | D2 |
| 02 | CS2 | CS1 | D2 | D2 |
| 01 | CS2(p2) | CS1(p2) | D2(p1) | D2(p1) |
| B1 | Carpark | | | |

46 SHELFORD ROAD, SINGAPORE 289694

| Floor \ Unit | 23 | 24 | 25 | 26 | 27 |
|--------------|--------------------|--------|---------|--------|--------|
| Attic | Communal Landscape | | | | PH3 |
| 05 | C2 | C1 | CS5 | E1 | |
| 04 | C2 | C1 | CS5 | E1 | E1 |
| 03 | C2 | C1 | CS5 | E1 | E1 |
| 02 | C2 | C1 | CS5 | E1 | E1 |
| 01 | C2(p1) | C1(p1) | CS5(p1) | E1(p1) | E1(p1) |
| B1 | Carpark | | | | |

40 SHELFORD ROAD, SINGAPORE 288433

| Floor \ Unit | 10 | 11 | 12 | 13 | 14 |
|--------------|--------------------|--------|--------|--------|--------|
| Attic | Communal Landscape | | | PH3 | |
| 05 | CS5 | C1 | C2 | | E1 |
| 04 | CS5 | C1 | C2 | E1 | E1 |
| 03 | CS5 | C1 | C2 | E1 | E1 |
| 02 | CS5 | C1 | C2 | E1 | E1 |
| 01 | CS5(p2) | C1(p2) | C2(p2) | E1(p1) | E1(p1) |
| B1 | Carpark | | | | |

42 SHELFORD ROAD, SINGAPORE 288435

| Floor \ Unit | 15 | 16 | 17 | 18 |
|--------------|---------|--------|--------------------|---------|
| Attic | | PH3 | Communal Landscape | |
| 05 | E1 | | CS2 | CS1 |
| 04 | E1 | E1 | CS2 | CS1 |
| 03 | E1 | E1 | CS2 | CS1 |
| 02 | E1 | E1 | CS2 | CS1 |
| 01 | E1(p2) | E1(p2) | CS2(p1) | CS1(p1) |
| B1 | Carpark | | | |

48 SHELFORD ROAD, SINGAPORE 289731

| Floor \ Unit | 28 | 29 | 30 | 31 |
|--------------|---------|--------------------|---------|---------|
| Attic | PH3 | Communal Landscape | | |
| 05 | | E1 | CS4 | CS3 |
| 04 | E1 | E1 | CS4 | CS3 |
| 03 | E1 | E1 | CS4 | CS3 |
| 02 | E1 | E1 | CS4 | CS3 |
| 01 | E1(p1) | E1(p1) | CS4(p1) | CS3(p1) |
| B1 | Carpark | | | |

50 SHELFORD ROAD, SINGAPORE 289732

| Floor \ Unit | 32 | 33 | 34 | 35 | 36 |
|--------------|--------------------|--------|--------|--------|--------|
| Attic | Communal Landscape | | | | PH1 |
| 05 | CS6 | C1 | C2 | D1 | |
| 04 | CS6 | C1 | C2 | D1 | D1 |
| 03 | CS6 | C1 | C2 | D1 | D1 |
| 02 | CS6 | C1 | C2 | D1 | D1 |
| 01 | CS6(p1) | C1(p1) | C2(p1) | D1(p2) | D1(p2) |
| B1 | Carpark | | | | |

3-BEDROOM

TYPE C1, C1(p1), C1(p2)

92 sqm | 990 sqft

TYPE C2, C2(p1), C2(p2)

108 sqm | 1163 sqft

3-BEDROOM + STUDY

TYPE CS1, CS1(p1), CS1(p2),
CS2, CS2(p1), CS2(p2), CS3, CS3(p1),
CS4, CS4(p1), CS5, CS5(p1), CS5(p2),
CS6, CS6(p1)

143 sqm | 1539 sqft

4-BEDROOM

TYPE D1, D1(p2), D2, D2(p1)

172 sqm | 1851 sqft

5-BEDROOM

TYPE E1, E1(p1), E1(p2)

220 sqm | 2368 sqft

PENTHOUSE

Sky Villa Luxury Collection

TYPE PH1, PH2

317 sqm | 3412 sqft

Sky Villa Prestige Collection

TYPE PH3

379 sqm | 4080 sqft



A Home Beyond Time

The private lift* opens up to an elegantly proportioned living room designed to provide maximum space for timeless memories to unfold. From simple everyday rituals to celebratory milestones, this is where family stories and legacies are woven. Where a house becomes a home.

*More than three-quarters of the residences come with a private lift

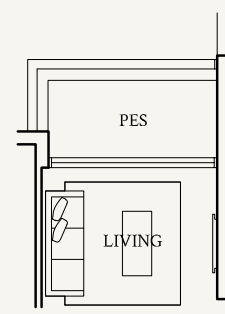
3-Bedroom

TYPE C1
92 sqm | 990 sqft

#02-04 to #05-04
#02-11 to #05-11
#02-33 to #05-33
#02-24* to #05-24*

TYPE C1(p1)
92 sqm | 990 sqft

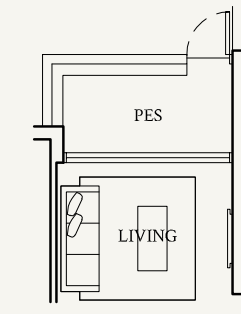
#01-04, #01-33
#01-24*



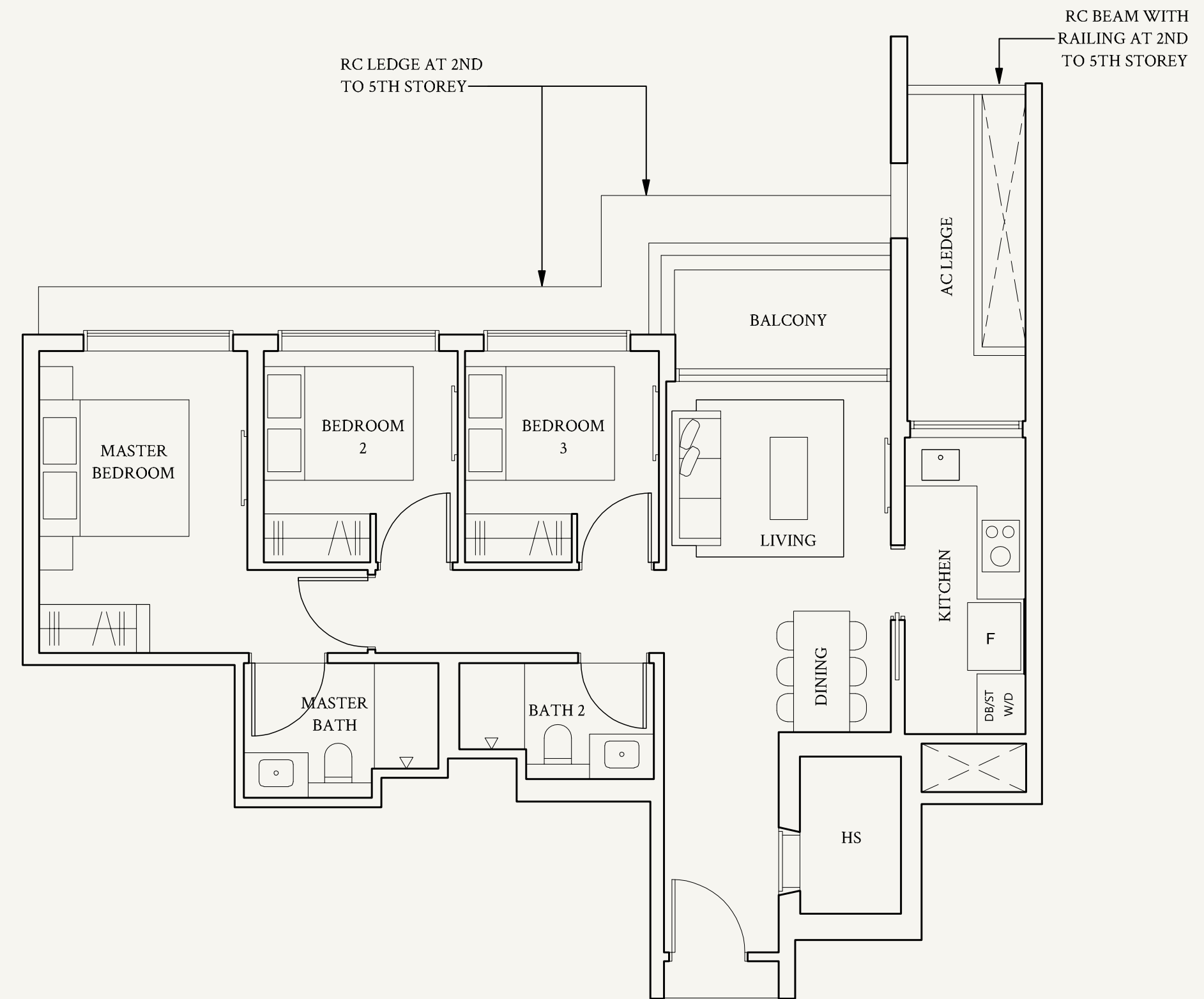
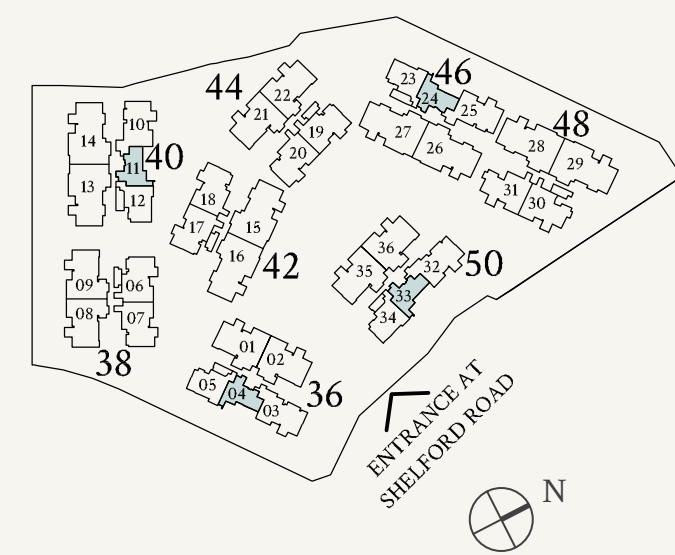
Not to scale

TYPE C1(p2)
92 sqm | 990 sqft

#01-11



Not to scale



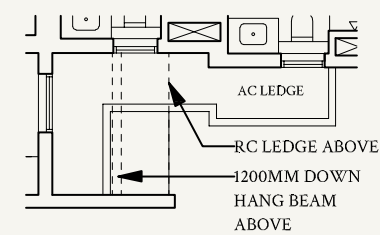
Areas include AC ledge, balcony, private enclosed space (PES) or private roof terrace (PRT), where applicable. All RC ledges are excluded from strata area and non-load bearing. The plans are subjected to change as may be required by relevant authorities. All areas and measurements stated herein as approximate and subject to final survey.

*Mirrored unit

3-Bedroom

TYPE C2
108 sqm | 1163 sqft

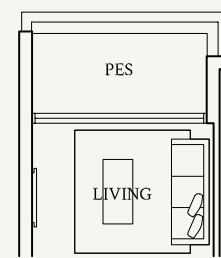
- #02-05 to #05-05
- #02-12 to #05-12
- #02-34 to #05-34
- #02-23* to #05-23*
- #05-05, #05-12, #05-34
- #05-23*



Not to scale

TYPE C2(p1)
108 sqm | 1163 sqft

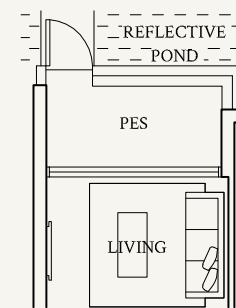
- #01-05, #01-34
- #01-23*



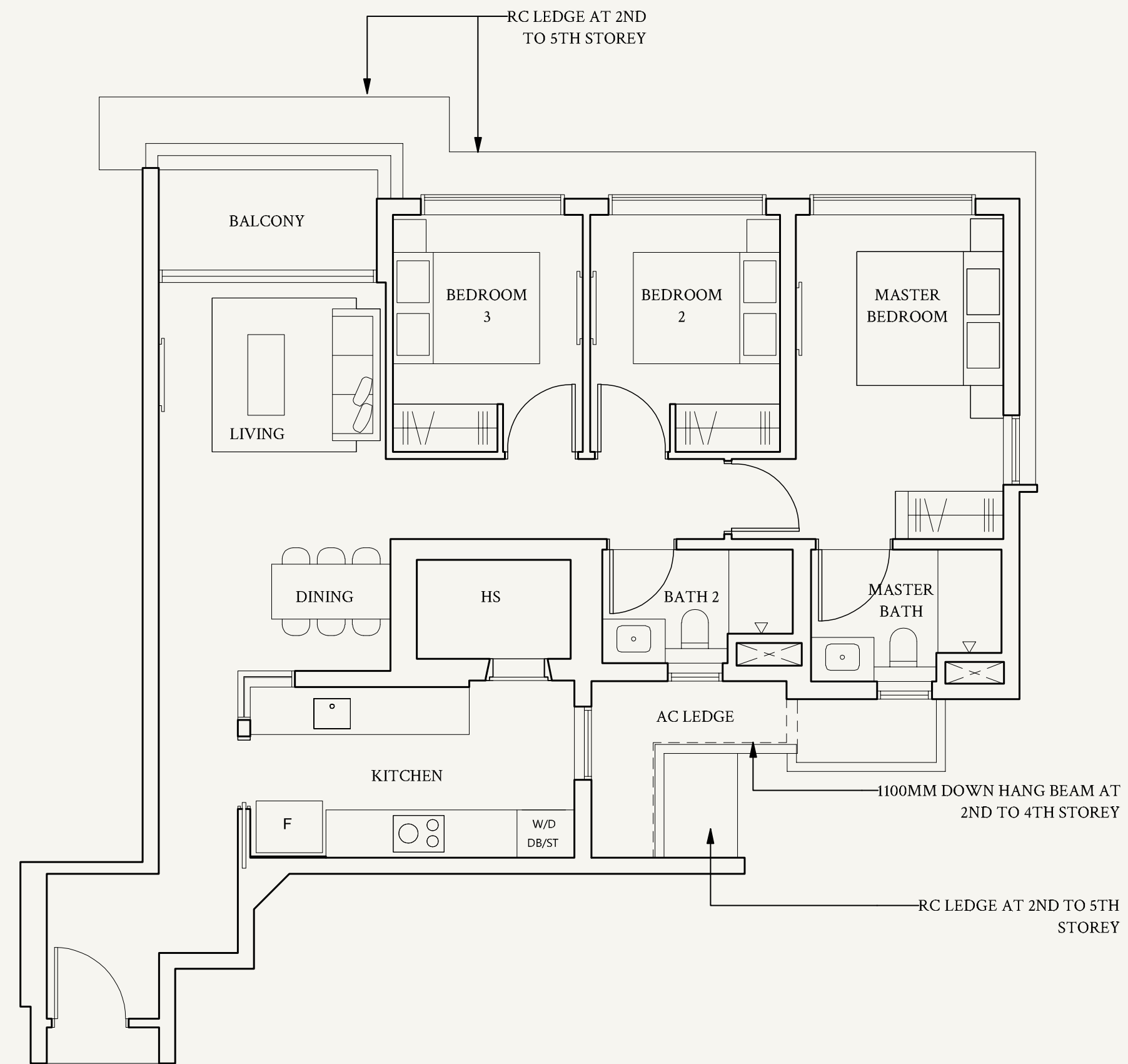
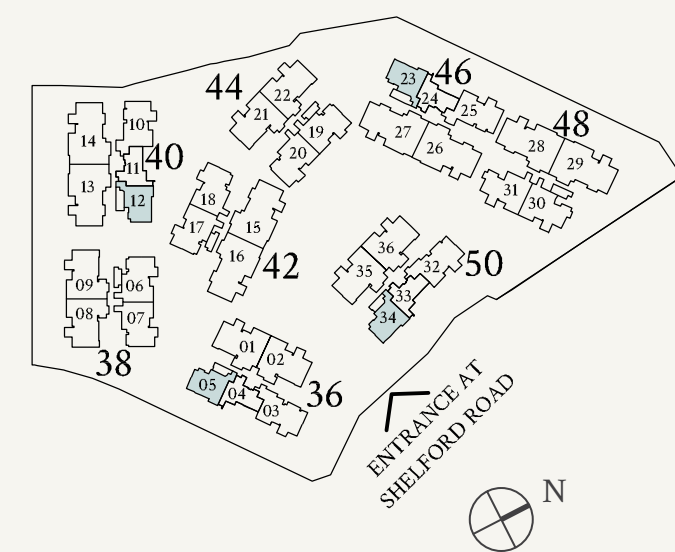
Not to scale

TYPE C2(p2)
108 sqm | 1163 sqft

- #01-12



Not to scale



Areas include AC ledge, balcony, private enclosed space (PES) or private roof terrace (PRT), where applicable. All RC ledges are excluded from strata area and non-load bearing. The plans are subjected to change as may be required by relevant authorities. All areas and measurements stated herein as approximate and subject to final survey.

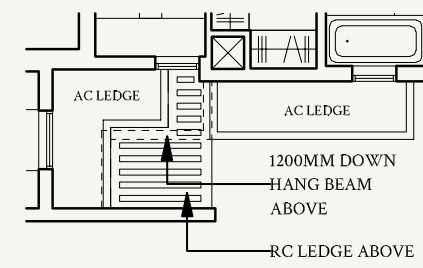
*Mirrored unit

3-Bedroom + Study

TYPE CS1
143 sqm | 1539 sqft

#02-07 to #05-07
#02-18 to #05-18
#02-20 to #05-20

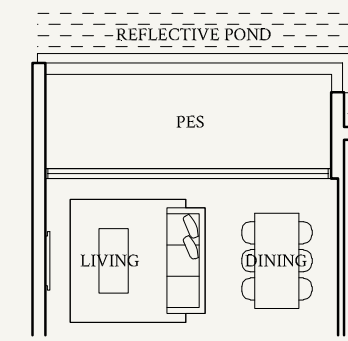
#05-07, #05-18, #05-20



Not to scale

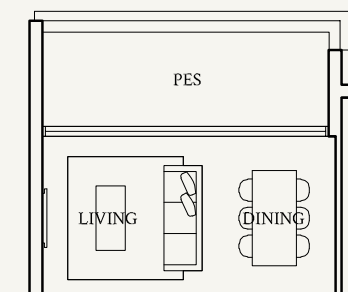
TYPE CS1(p1)
143 sqm | 1539 sqft

#01-07



Not to scale

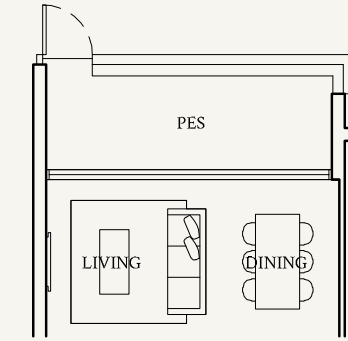
#01-18



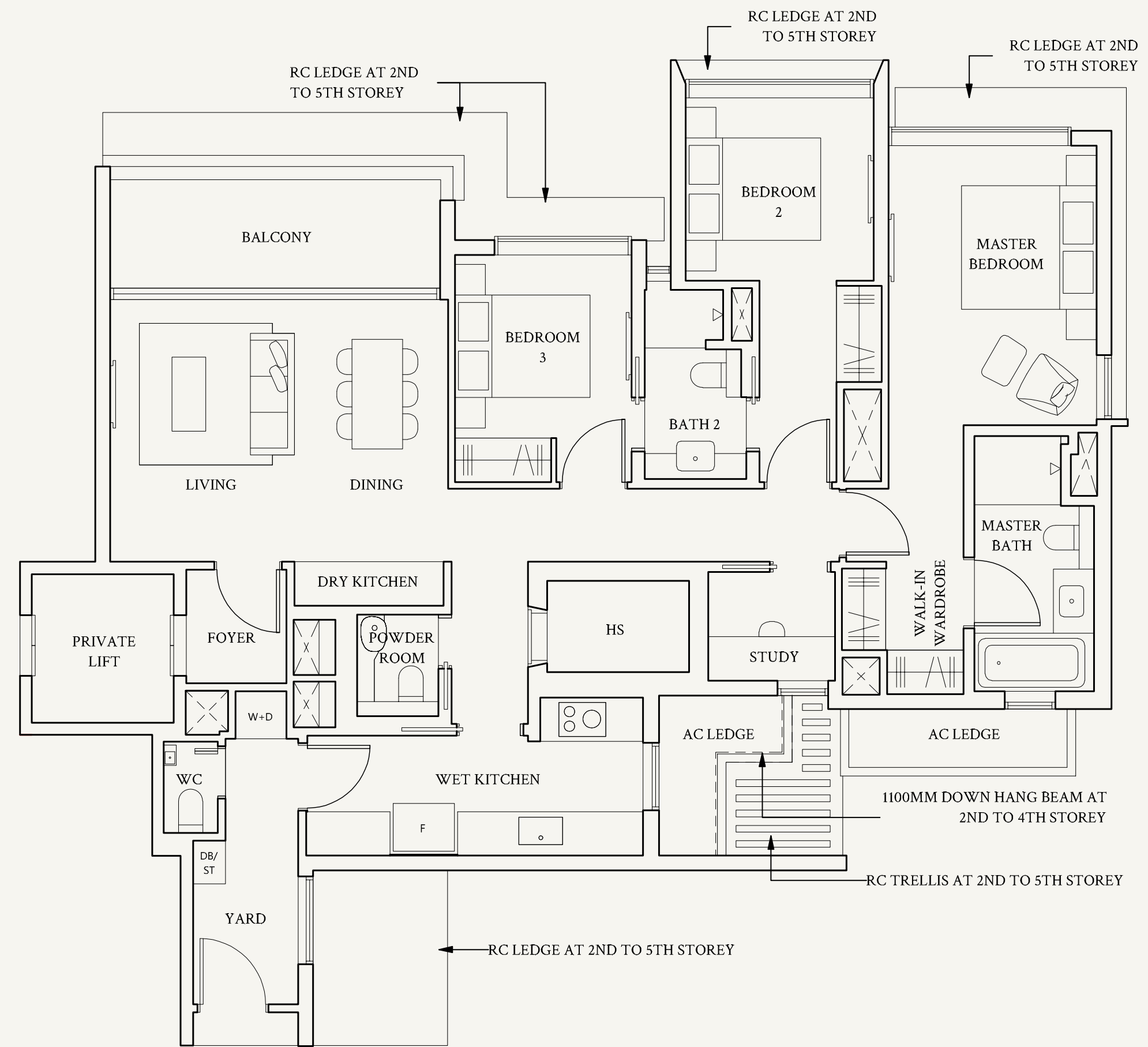
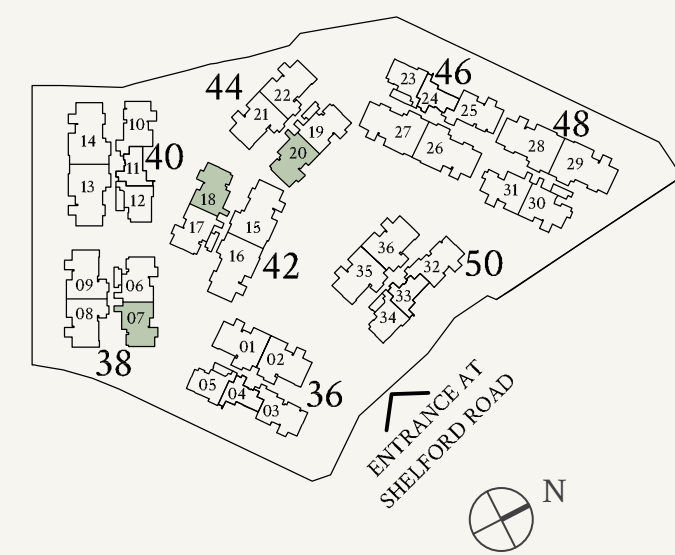
Not to scale

TYPE CS1(p2)
143 sqm | 1539 sqft

#01-20



Not to scale



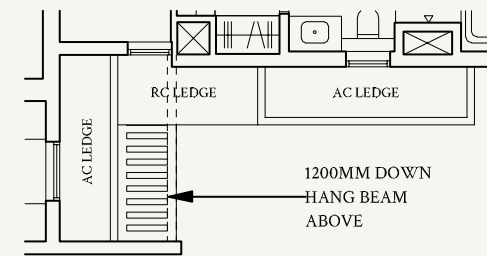
Areas include AC ledge, balcony, private enclosed space (PES) or private roof terrace (PRT), where applicable. All RC ledges are excluded from strata area and non-load bearing. The plans are subjected to change as may be required by relevant authorities. All areas and measurements stated herein as approximate and subject to final survey.

3-Bedroom + Study

TYPE CS3
143 sqm | 1539 sqft

#02-31 to #05-31

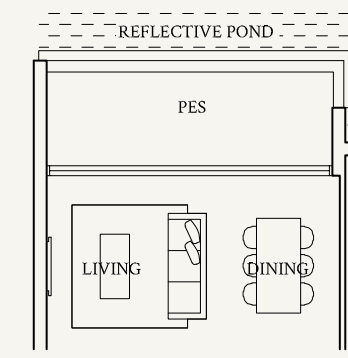
#05-31



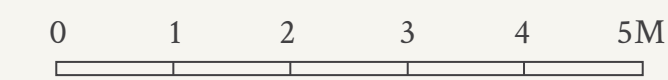
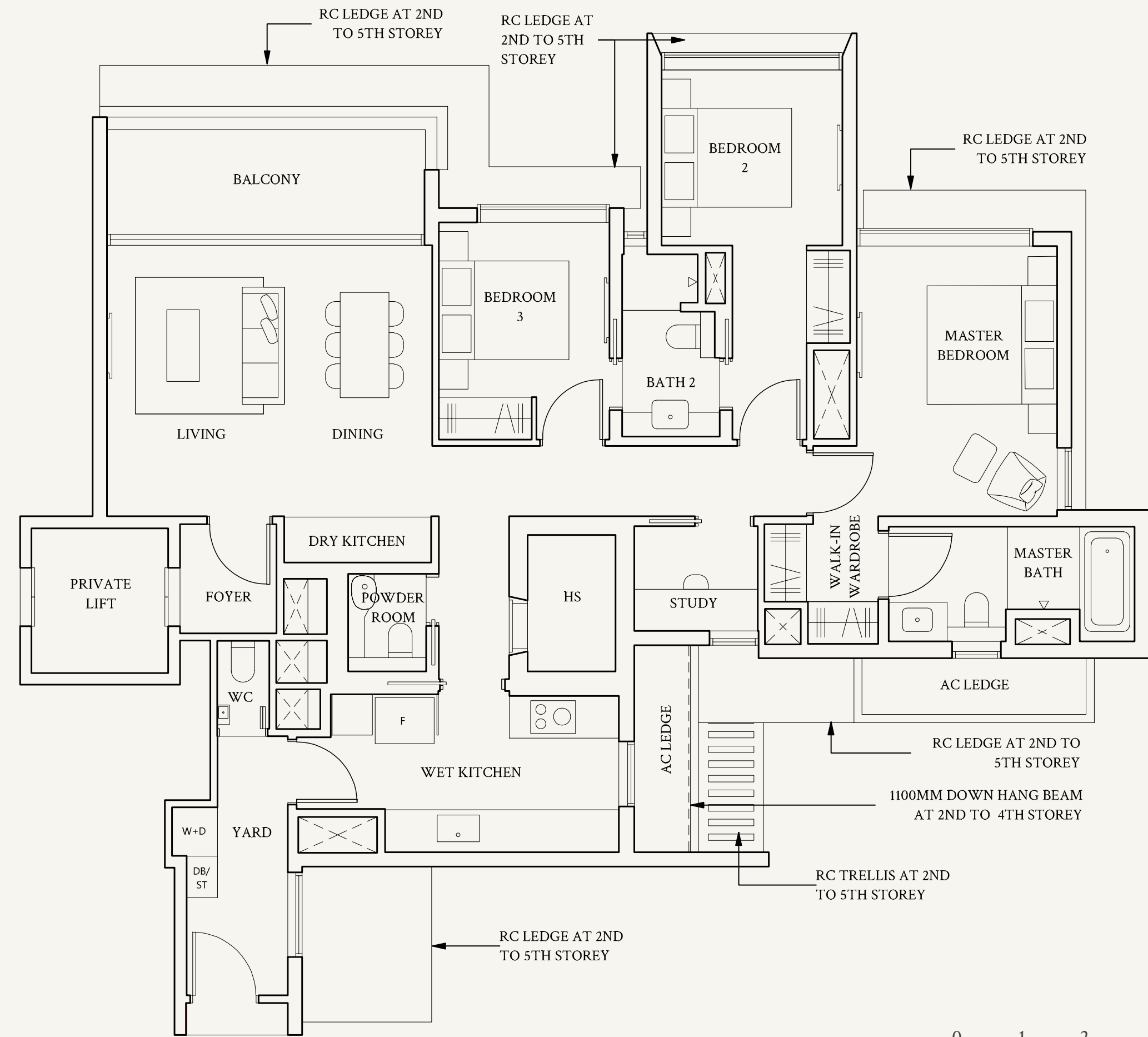
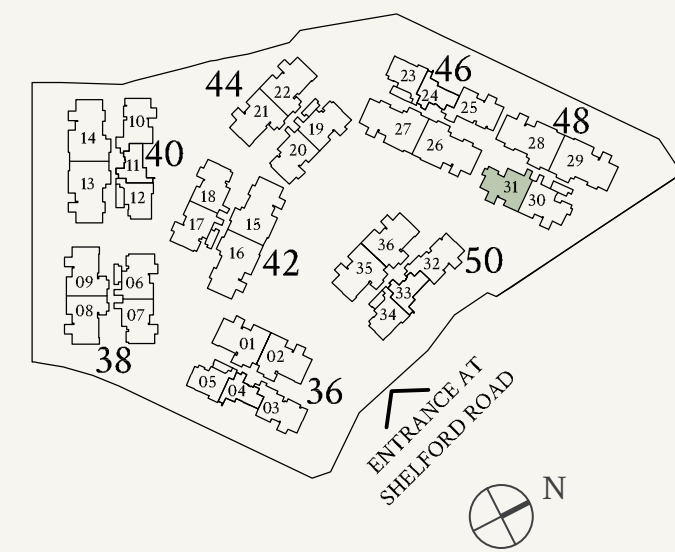
Not to scale

TYPE CS3(p1)
143 sqm | 1539 sqft

#01-31



Not to scale



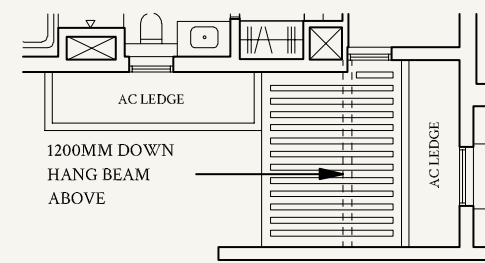
Areas include AC ledge, balcony, private enclosed space (PES) or private roof terrace (PRT), where applicable. All RC ledges are excluded from strata area and non-load bearing. The plans are subjected to change as may be required by relevant authorities. All areas and measurements stated herein as approximate and subject to final survey.

3-Bedroom + Study

TYPE CS4
143 sqm | 1539 sqft

#02-30 to #05-30

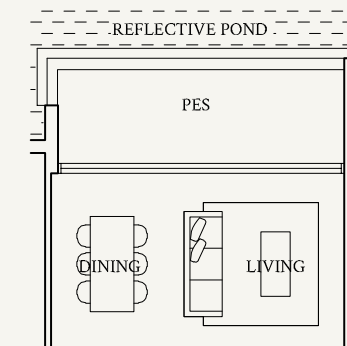
#05-30



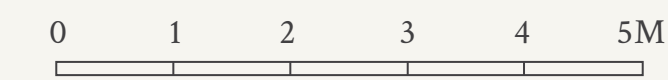
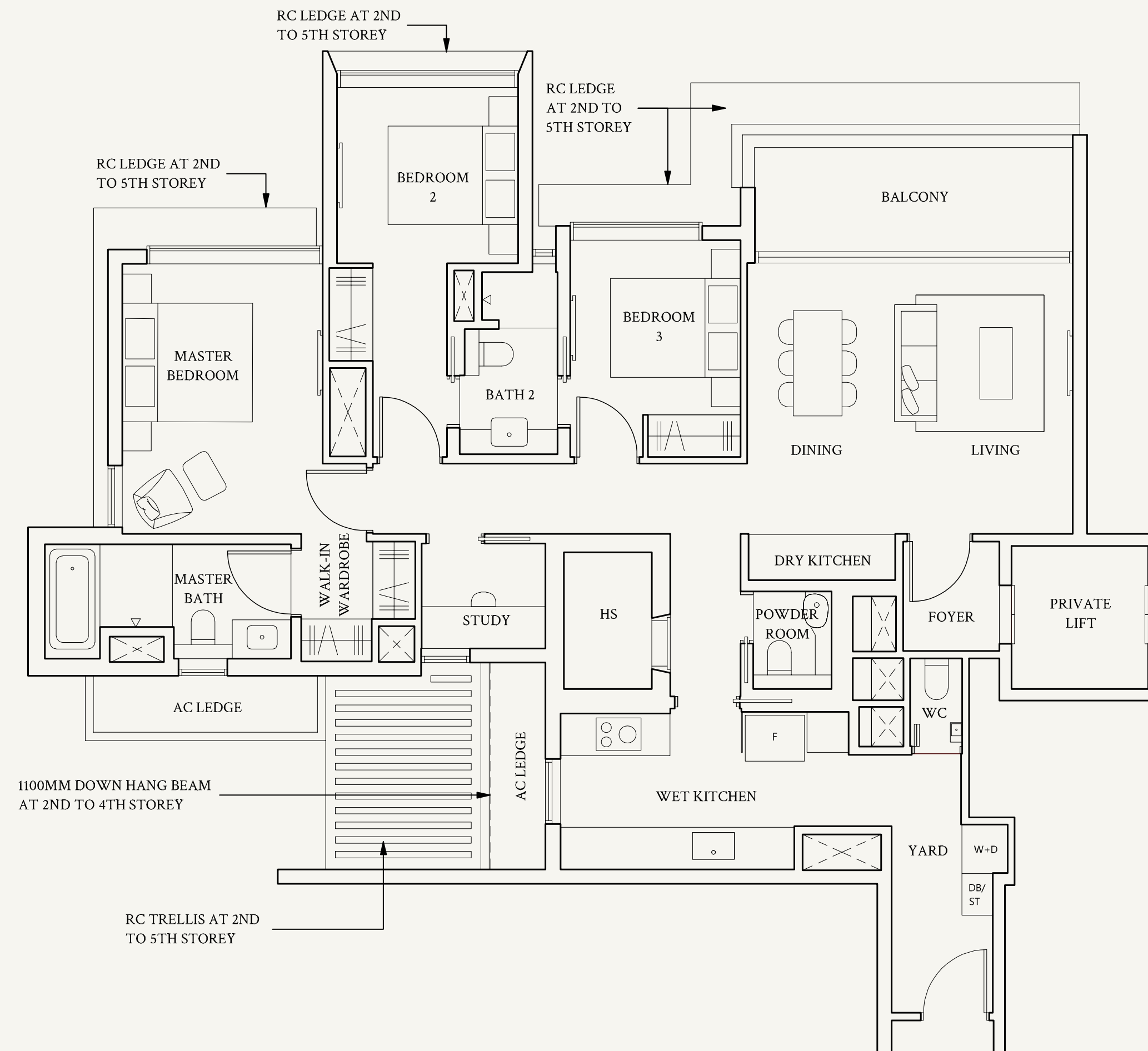
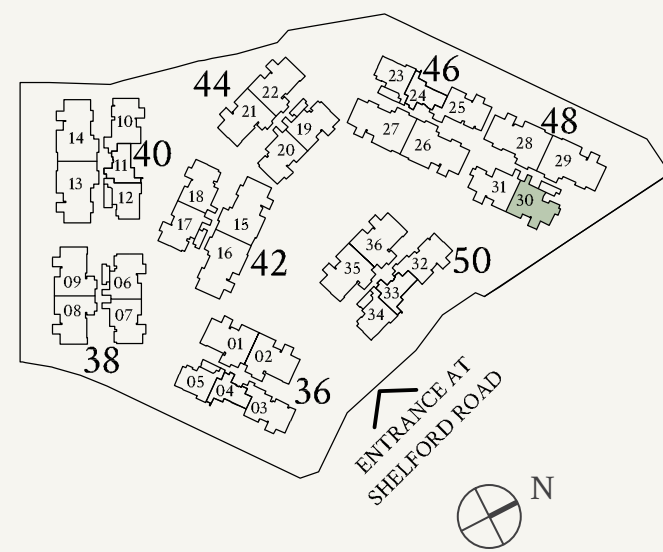
Not to scale

TYPE CS4(p1)
143 sqm | 1539 sqft

#01-30



Not to scale



Areas include AC ledge, balcony, private enclosed space (PES) or private roof terrace (PRT), where applicable. All RC ledges are excluded from strata area and non-load bearing. The plans are subjected to change as may be required by relevant authorities. All areas and measurements stated herein as approximate and subject to final survey.

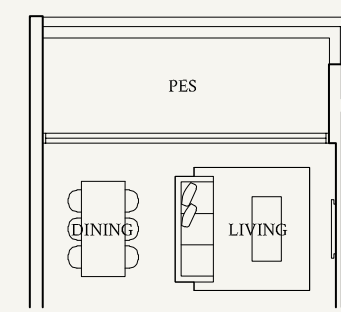
3-Bedroom + Study

TYPE CS5
143 sqm | 1539 sqft

#02-25 to #05-25
#02-10* to #05-10*

TYPE CS5(p1)
143 sqm | 1539 sqft

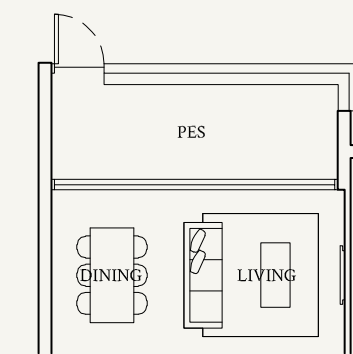
#01-25



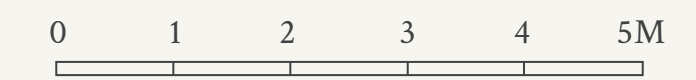
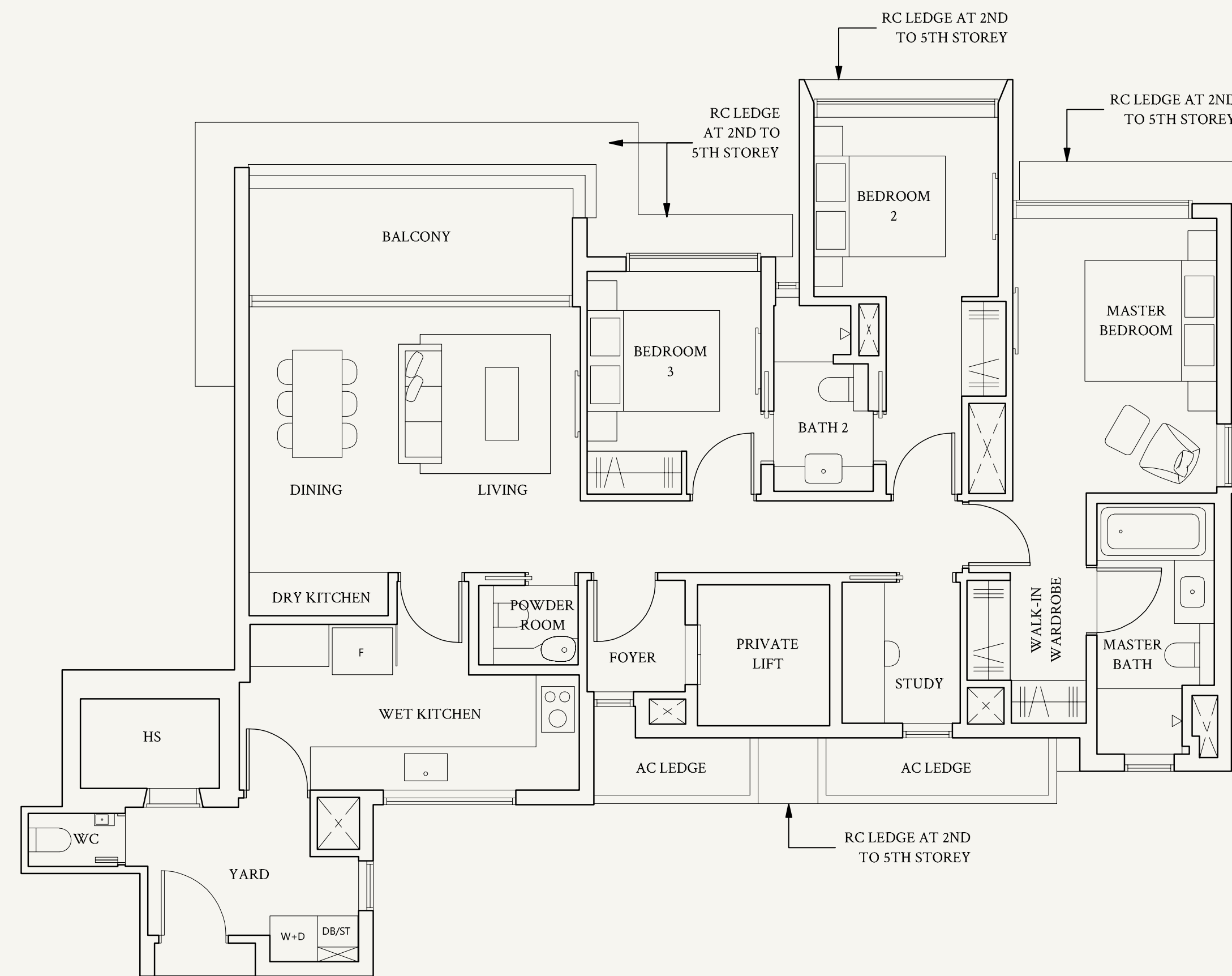
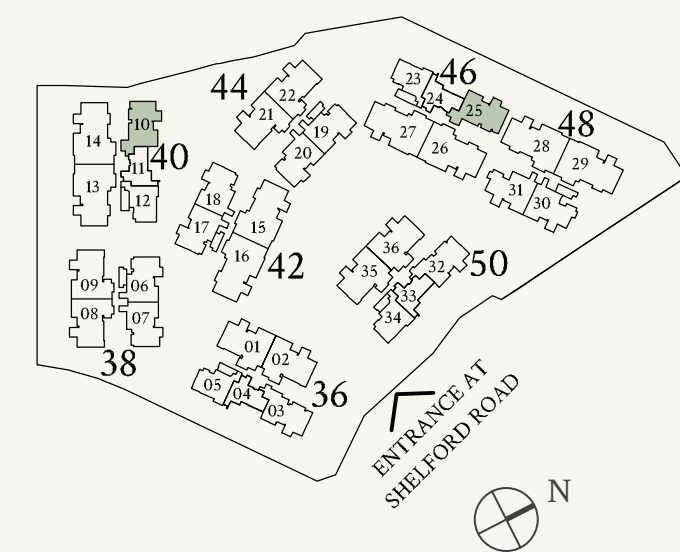
Not to scale

TYPE CS5(p2)
143 sqm | 1539 sqft

#01-10*



Not to scale



Areas include AC ledge, balcony, private enclosed space (PES) or private roof terrace (PRT), where applicable. All RC ledges are excluded from strata area and non-load bearing. The plans are subjected to change as may be required by relevant authorities. All areas and measurements stated herein as approximate and subject to final survey.

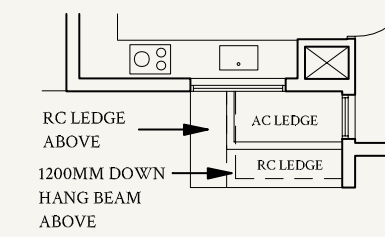
*Mirrored unit

3-Bedroom + Study

TYPE CS6
143 sqm | 1539 sqft

#02-03 to #05-03
#02-32 to #05-32

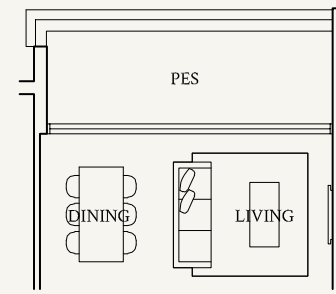
#05-03, #05-32



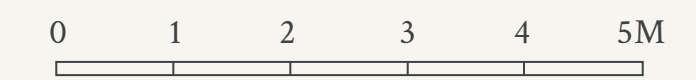
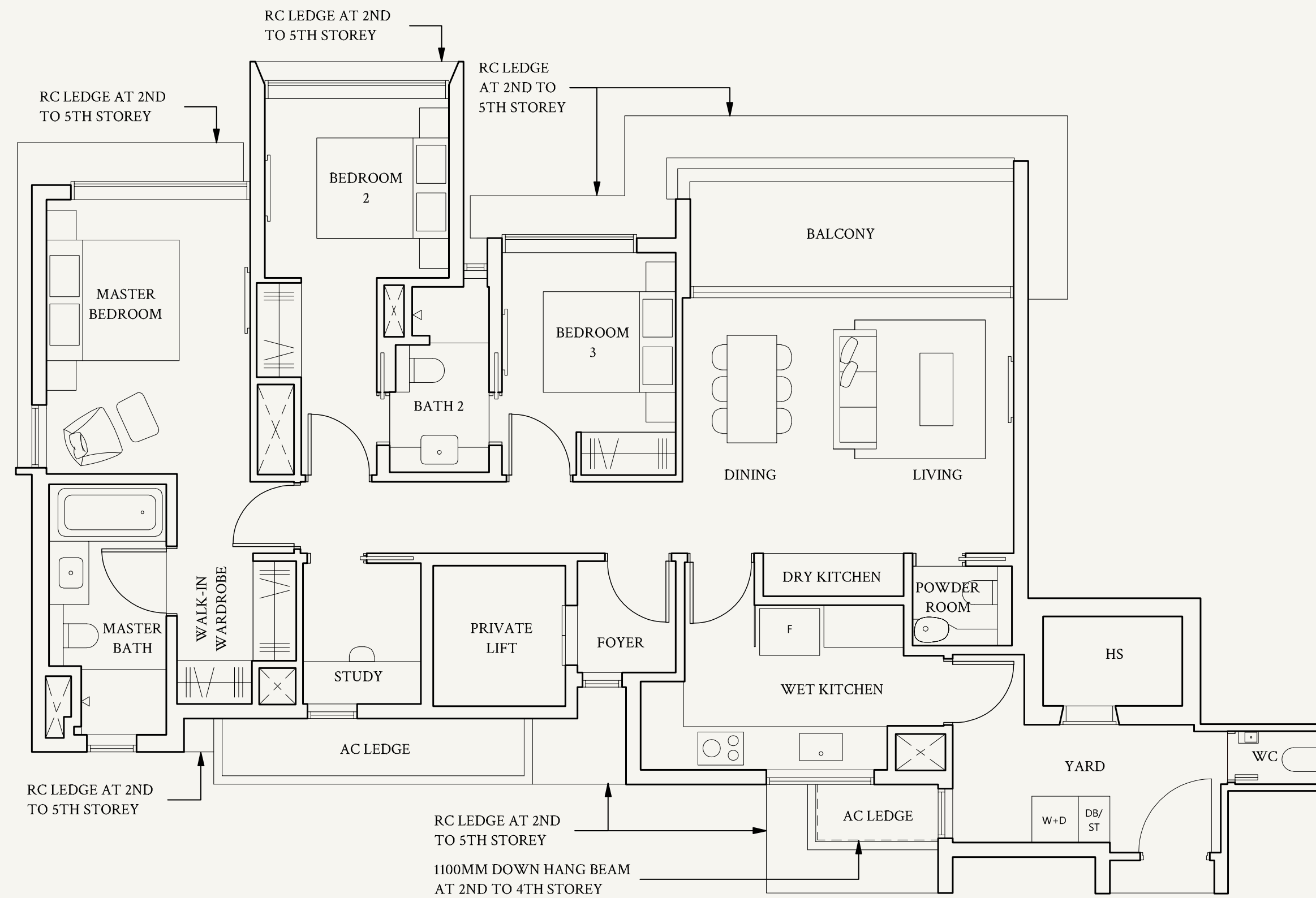
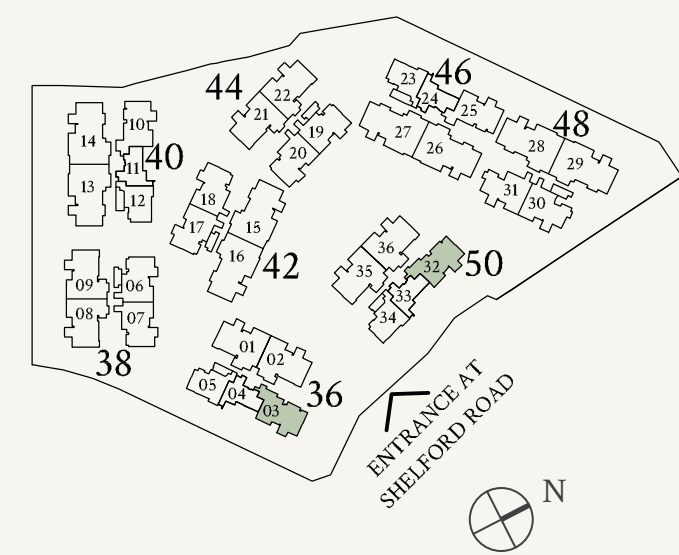
Not to scale

TYPE CS6(p1)
143 sqm | 1539 sqft

#01-03, #01-32



Not to scale



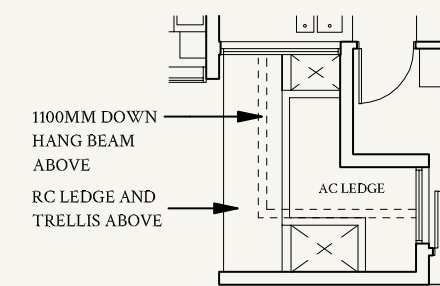
Areas include AC ledge, balcony, private enclosed space (PES) or private roof terrace (PRT), where applicable. All RC ledges are excluded from strata area and non-load bearing. The plans are subjected to change as may be required by relevant authorities. All areas and measurements stated herein as approximate and subject to final survey.

4-Bedroom

TYPE D2
172 sqm | 1851 sqft

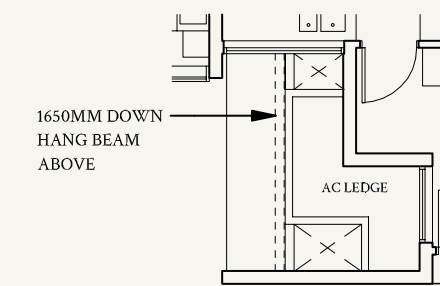
#02-08 to #05-08
#02-21 to #04-21
#02-09* to #04-09*
#02-22* to #05-22*

#04-21, #04-09*

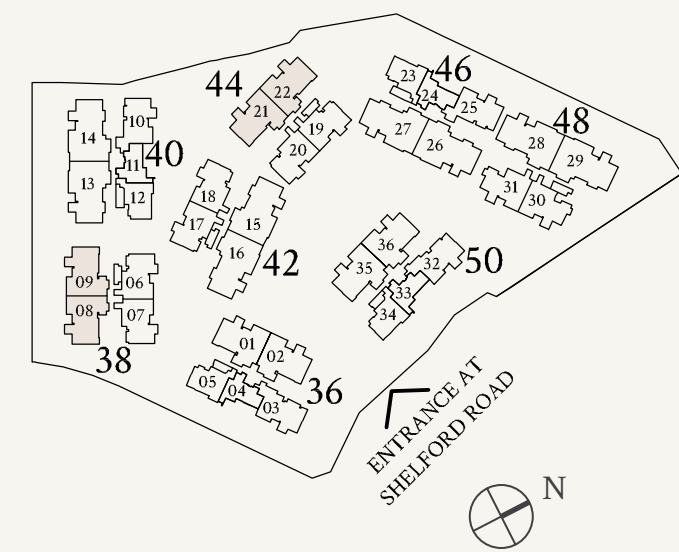


Not to scale

#05-08, #05-22*

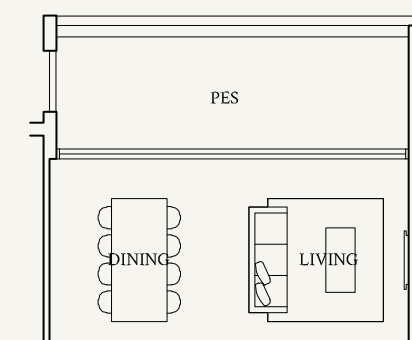


Not to scale

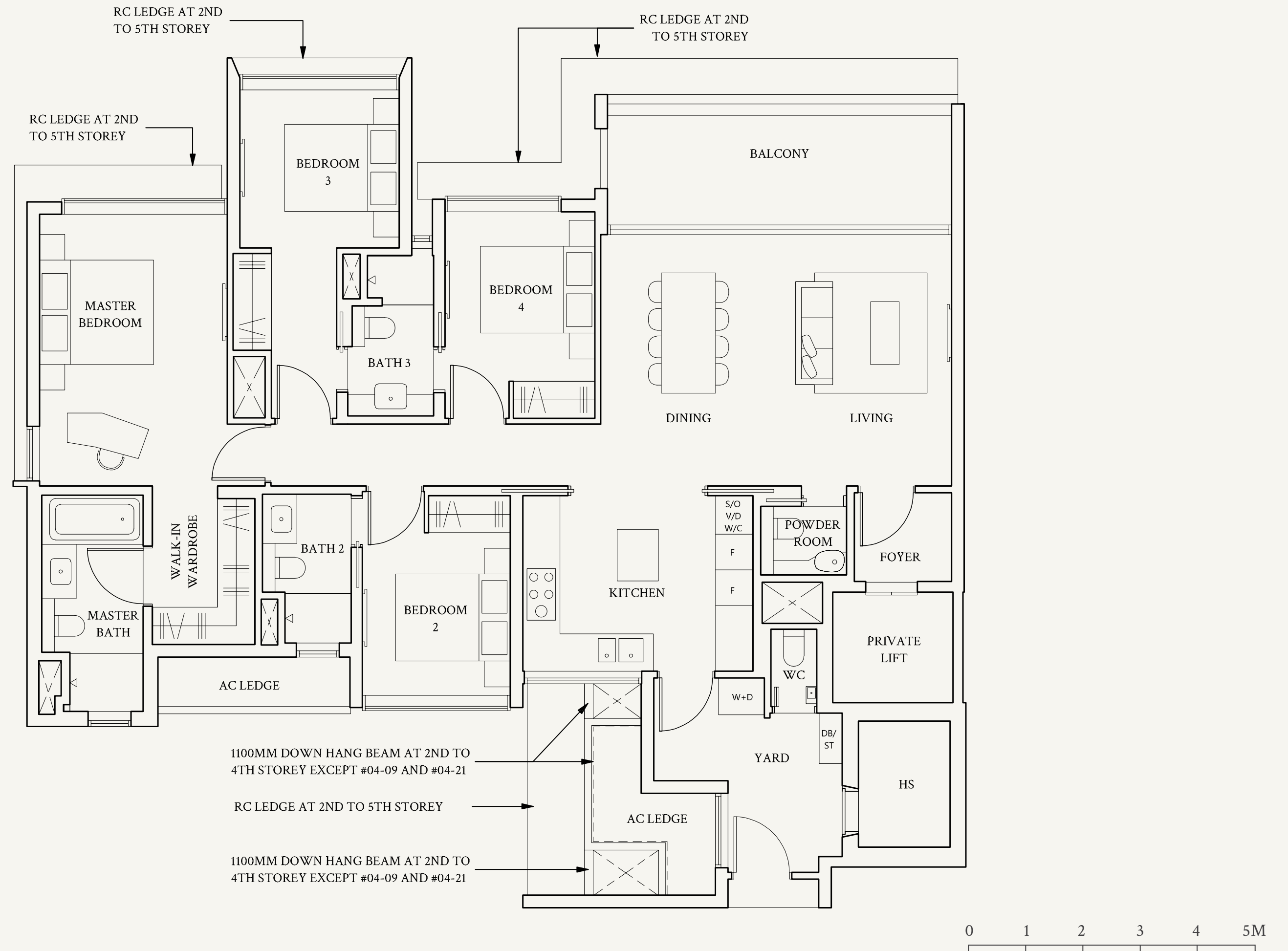


TYPE D2(p1)
172 sqm | 1851 sqft

#01-08, #01-21
#01-09*, #01-22*



Not to scale



Areas include AC ledge, balcony, private enclosed space (PES) or private roof terrace (PRT), where applicable. All RC ledges are excluded from strata area and non-load bearing. The plans are subjected to change as may be required by relevant authorities. All areas and measurements stated herein as approximate and subject to final survey.

*Mirrored unit



For illustration only.

An Innermost Sanctum

Retreat into the sanctity of the spacious master bedroom after a day well spent. Here, there is space and time for peaceful interludes and personal reflection. Here, you will find solace to recharge and awaken to a new dawn of beginnings.

5-Bedroom

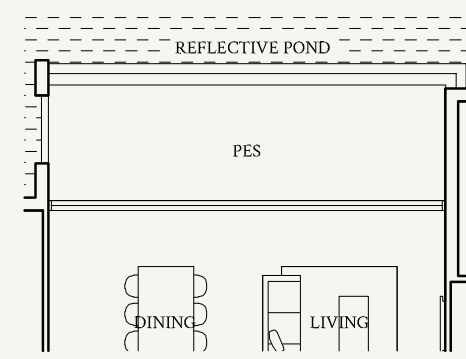
TYPE E1
220 sqm | 2368 sqft

#02-13 to #04-13
#02-15 to #05-15
#02-26 to #05-26
#02-28 to #04-28

#02-14* to #05-14*
#02-16* to #04-16*
#02-27* to #04-27*
#02-29* to #05-29*

TYPE E1(p1)
220 sqm | 2368 sqft

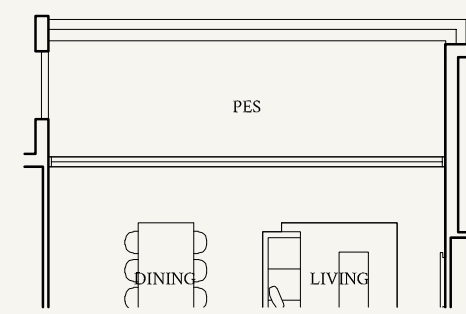
#01-26, #01-27*



Not to scale

#01-13, #01-28

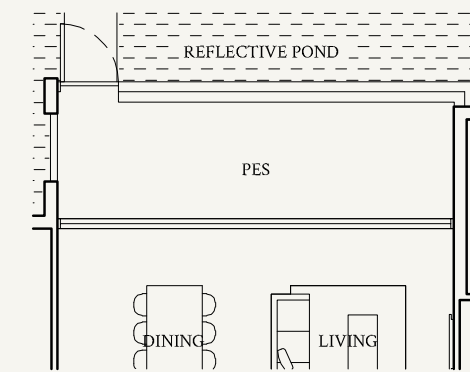
#01-14*, #01-29*



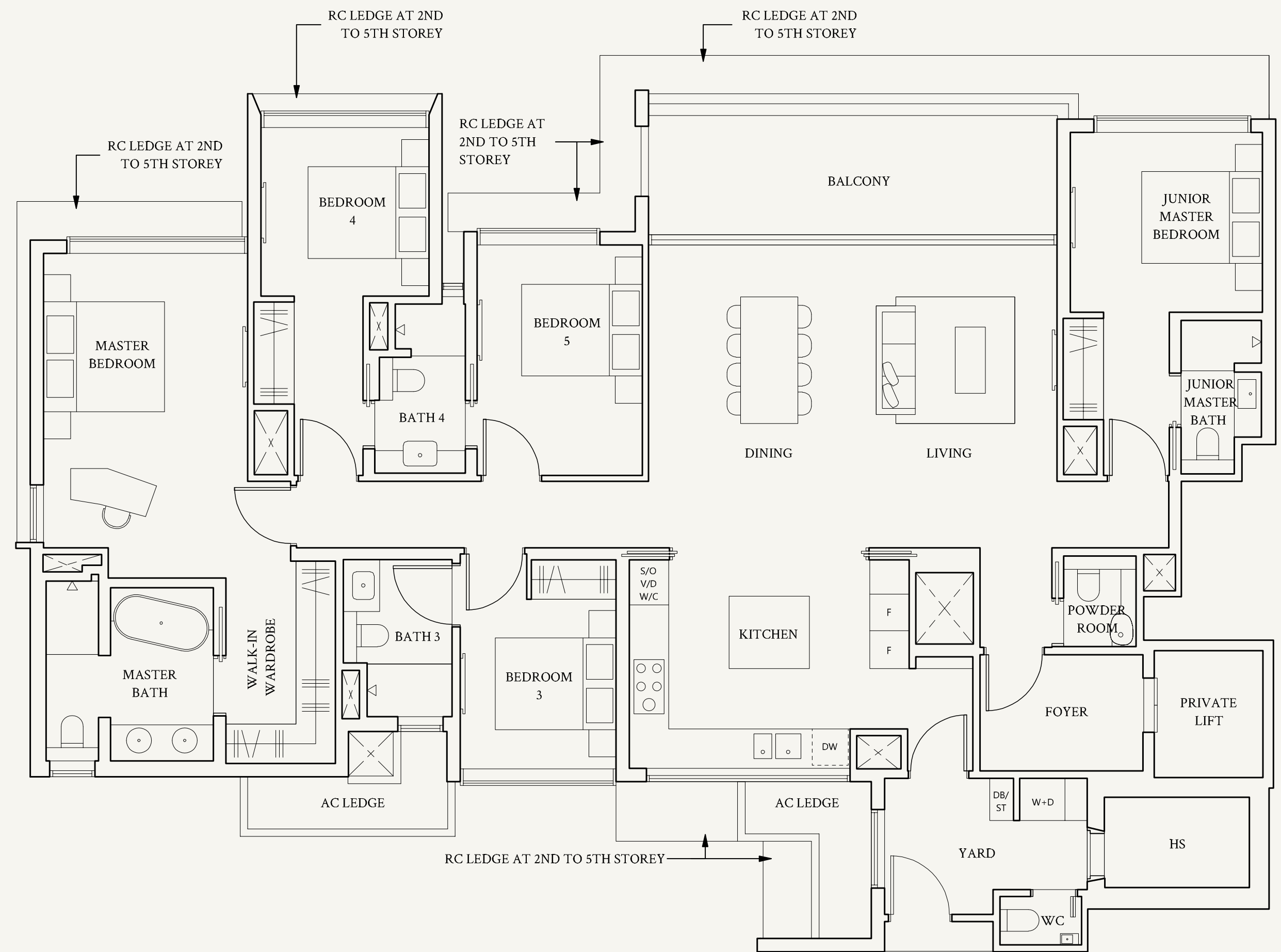
Not to scale

TYPE E1(p2)
220 sqm | 2368 sqft

#01-15, #01-16*

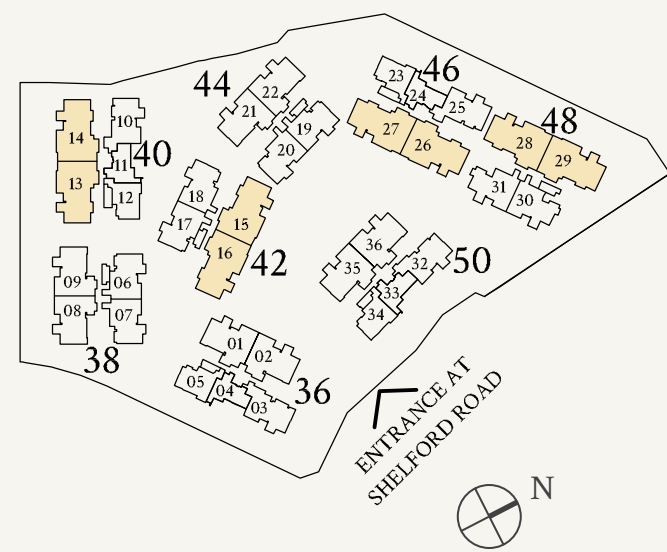


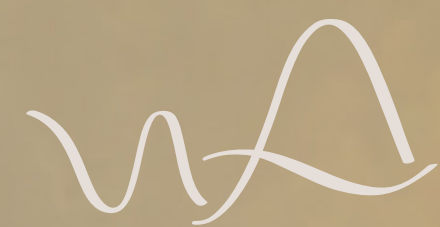
Not to scale



Areas include AC ledge, balcony, private enclosed space (PES) or private roof terrace (PRT), where applicable. All RC ledges are excluded from strata area and non-load bearing. The plans are subjected to change as may be required by relevant authorities. All areas and measurements stated herein as approximate and subject to final survey.

*Mirrored unit





WATTEN HOUSE

PENTHOUSES



Villas in the Sky

Watten House includes 8 rare penthouses, under the Sky Villa Prestige Collection and Sky Villa Luxury Collection. Each spanning between 3,412 and 4,080 sqft, these double-storey 6- and 7-bedroom penthouses are designed like villas in the sky, for those accustomed to the very best.



“In the mansion I would have the eaves deep and the walls dark,
I would push back into the shadows the things that come forward
too clearly, I would strip away the useless decoration.”

JUN'ICHIRO TANIZAKI, IN PRAISE OF SHADOWS



WATTEN HOUSE

SKY VILLA LUXURY
COLLECTION

Tranquil Living Elevated

At the highest point of Watten Estate, the double-storey penthouses stand as architectural masterpieces in nature. Whether you are spending time indoors or outdoors, you will find generously designed spaces that bring the whole family together.



For illustration only.

Penthouse

TYPE PH1

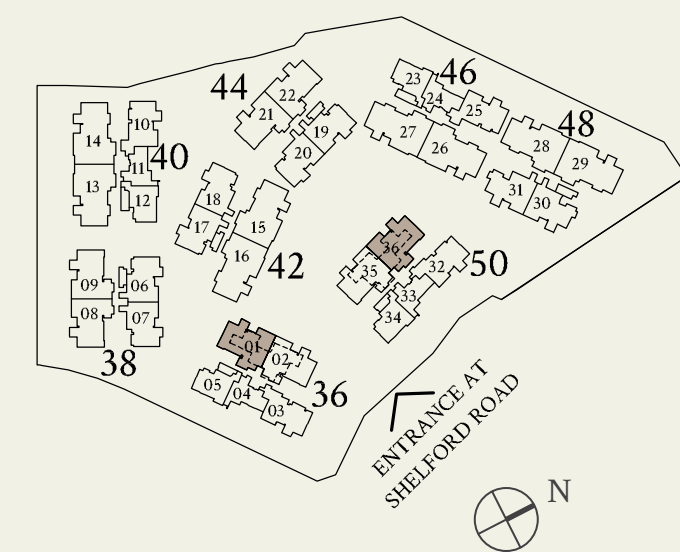
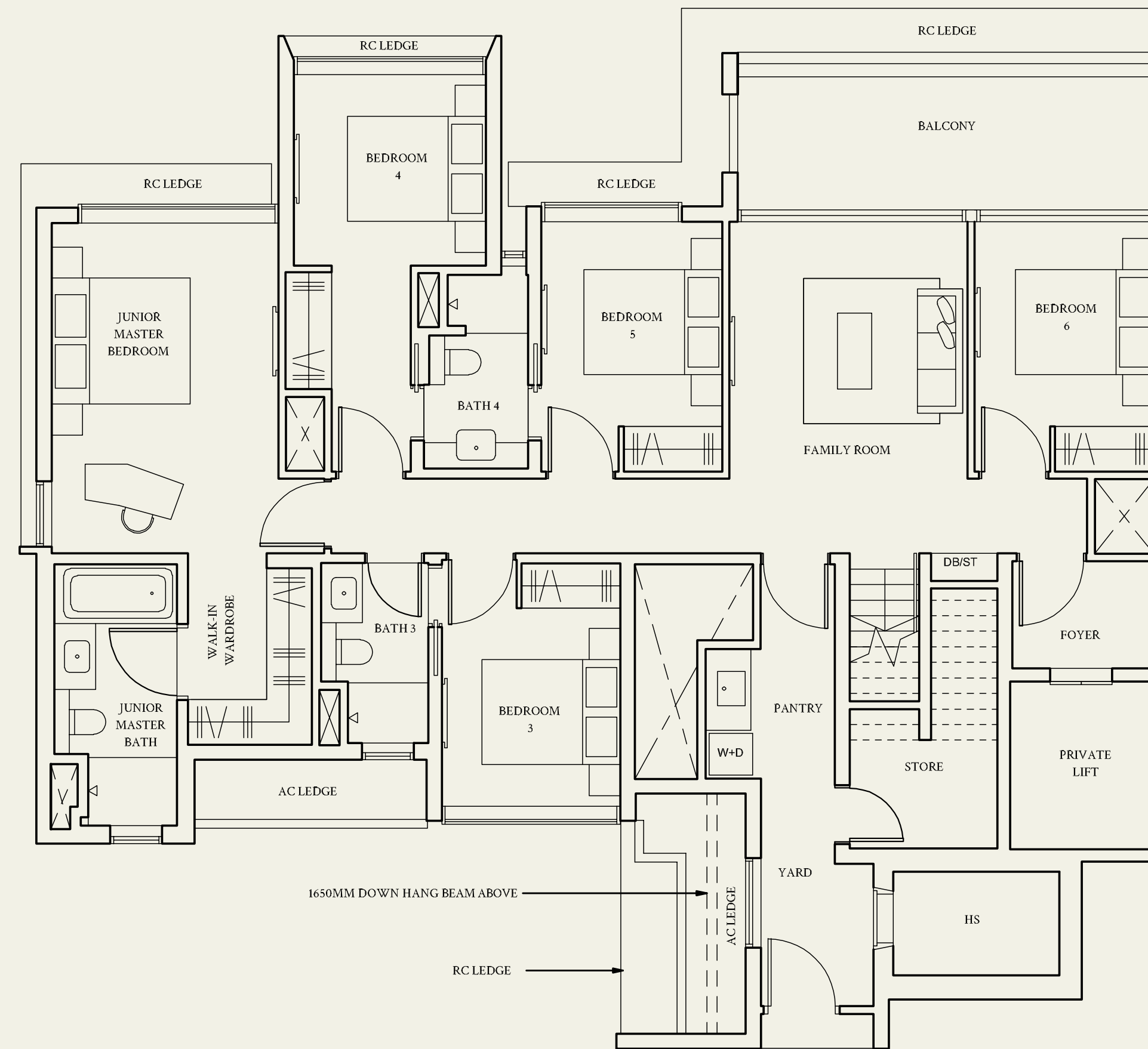
Lower Level

317 sqm | 3412 sqft

Inclusive of strata void area of
9 sqm / 97 sqft above staircase

#05-01

#05-36*



Areas include AC ledge, balcony, private enclosed space (PES) or private roof terrace (PRT), where applicable. All RC ledges are excluded from strata area and non-load bearing. The plans are subjected to change as may be required by relevant authorities. All areas and measurements stated herein as approximate and subject to final survey.

*Mirrored unit

Penthouse

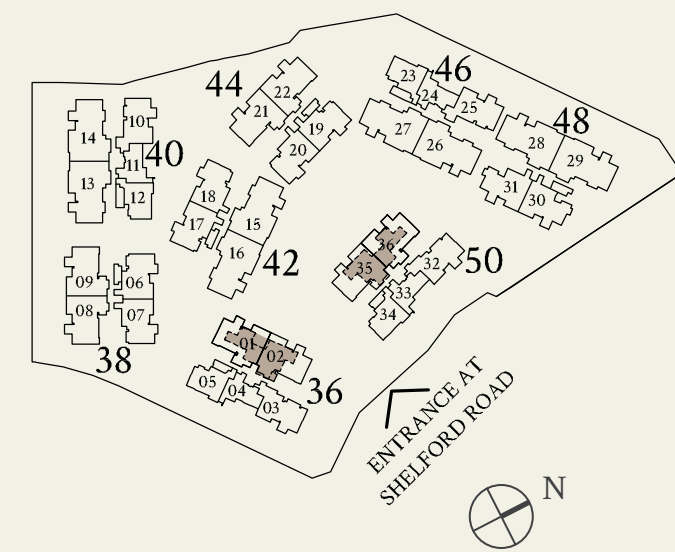
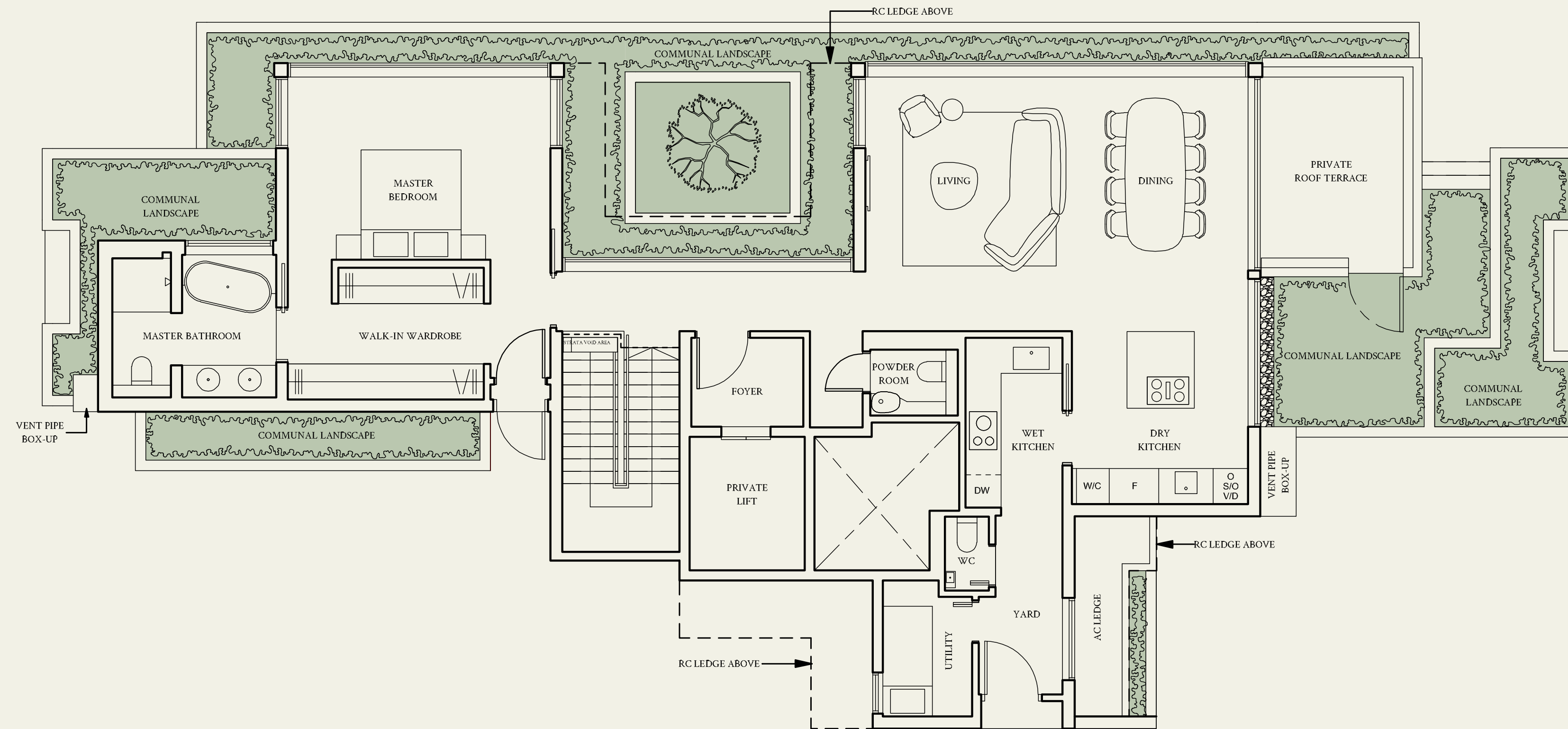
TYPE PH1
Upper Level

317 sqm | 3412 sqft

Inclusive of strata void area of
9 sqm / 97 sqft above staircase

#05-01

#05-36*



Areas include AC ledge, balcony, private enclosed space (PES) or private roof terrace (PRT), where applicable. All RC ledges are excluded from strata area and non-load bearing. The plans are subjected to change as may be required by relevant authorities. All areas and measurements stated herein as approximate and subject to final survey.

*Mirrored unit

Penthouse

TYPE PH2

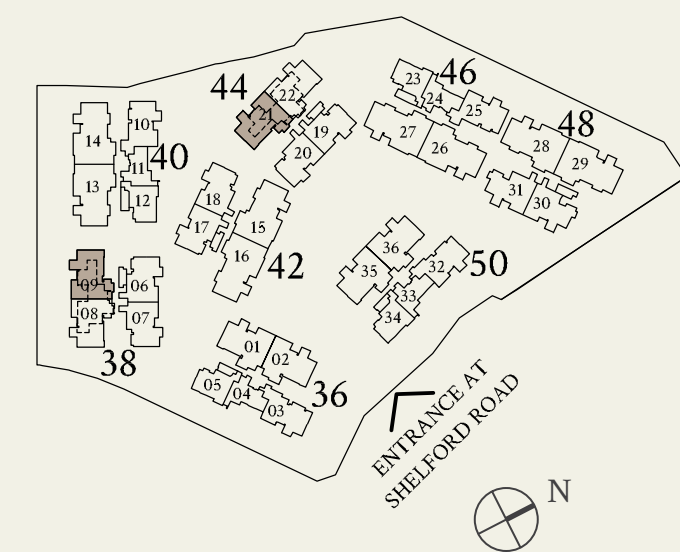
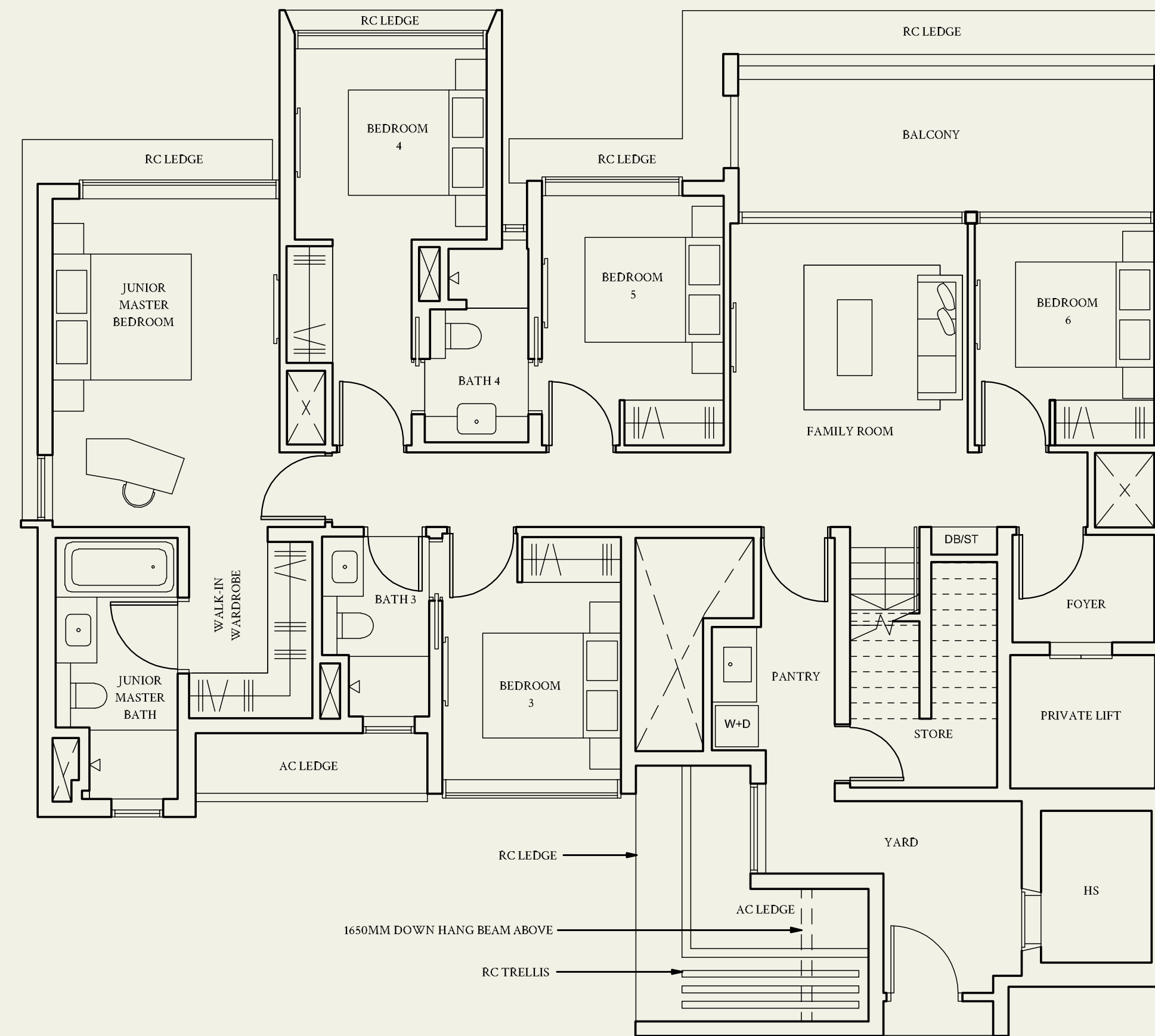
Lower Level

317 sqm | 3412 sqft

Inclusive of strata void area of
9 sqm / 97 sqft above staircase

#05-21

#05-09*



Areas include AC ledge, balcony, private enclosed space (PES) or private roof terrace (PRT), where applicable. All RC ledges are excluded from strata area and non-load bearing. The plans are subjected to change as may be required by relevant authorities. All areas and measurements stated herein as approximate and subject to final survey.

*Mirrored unit

Penthouse

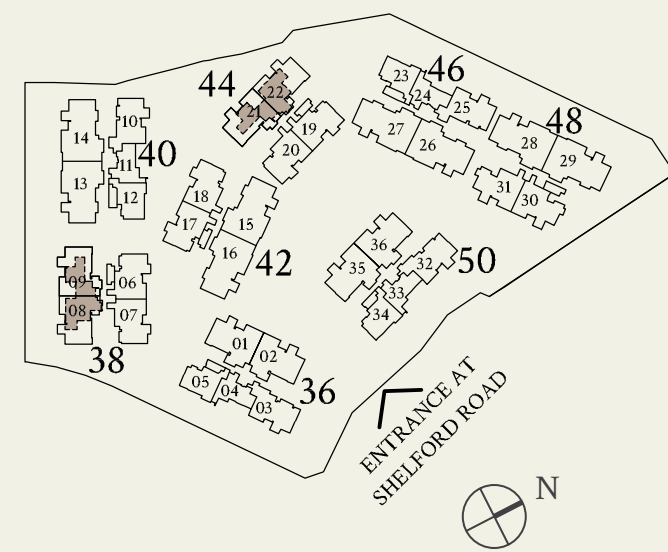
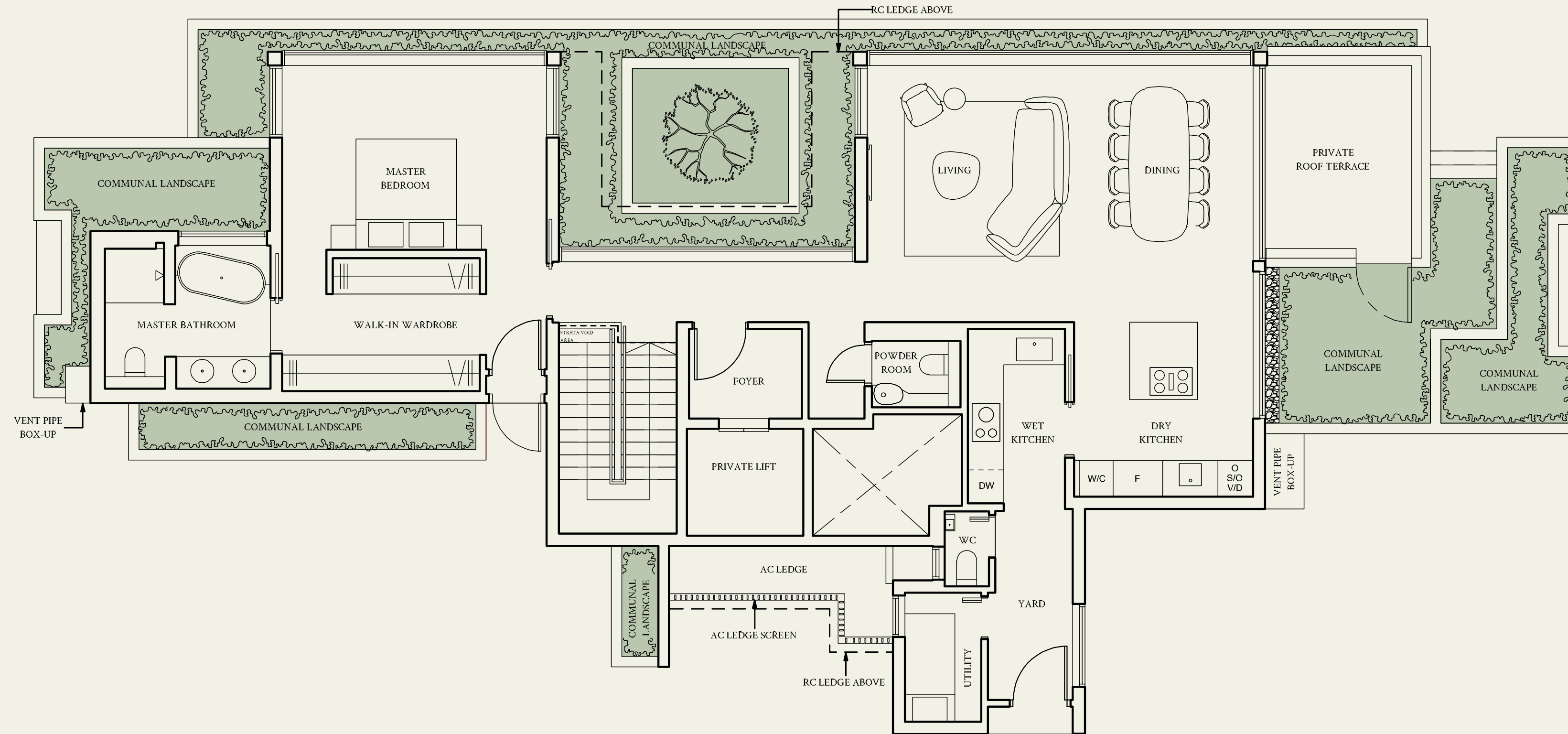
TYPE PH2
Upper Level

317 sqm | 3412 sqft

Inclusive of strata void area of
9 sqm / 97 sqft above staircase

#05-21

#05-09*



Areas include AC ledge, balcony, private enclosed space (PES) or private roof terrace (PRT), where applicable. All RC ledges are excluded from strata area and non-load bearing. The plans are subjected to change as may be required by relevant authorities. All areas and measurements stated herein as approximate and subject to final survey.

*Mirrored unit



WATTEN HOUSE

SKY VILLA PRESTIGE
COLLECTION



Penthouse

TYPE PH3

Lower Level

379 sqm | 4080 sqft

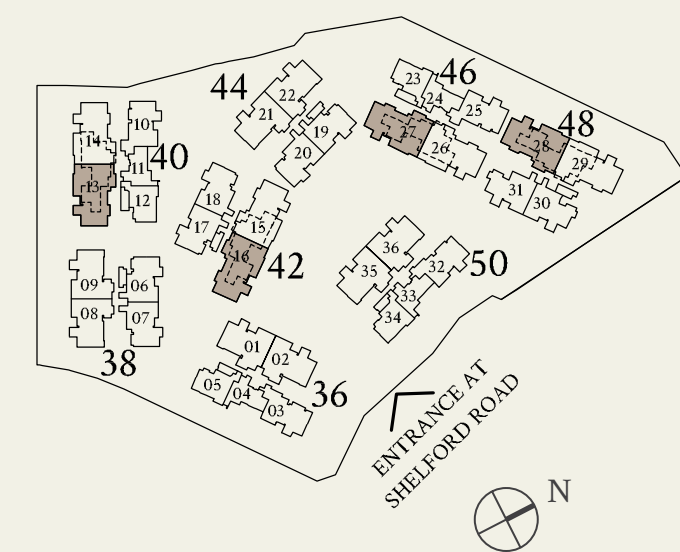
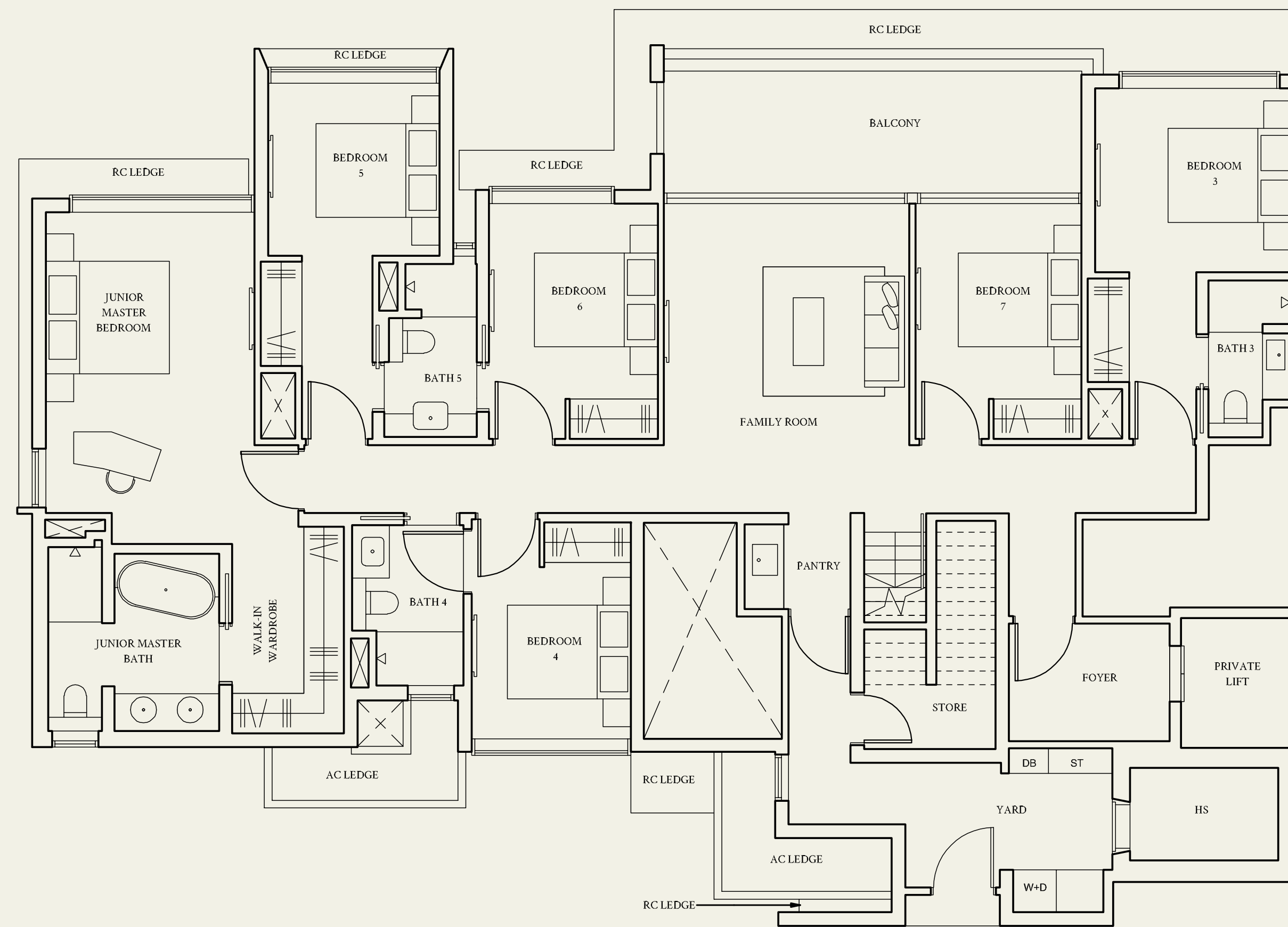
Inclusive of strata void area of
9 sqm / 97 sqft above staircase

#05-13

#05-28

#05-16*

#05-27*



Areas include AC ledge, balcony, private enclosed space (PES) or private roof terrace (PRT), where applicable. All RC ledges are excluded from strata area and non-load bearing. The plans are subjected to change as may be required by relevant authorities. All areas and measurements stated herein as approximate and subject to final survey.

*Mirrored unit

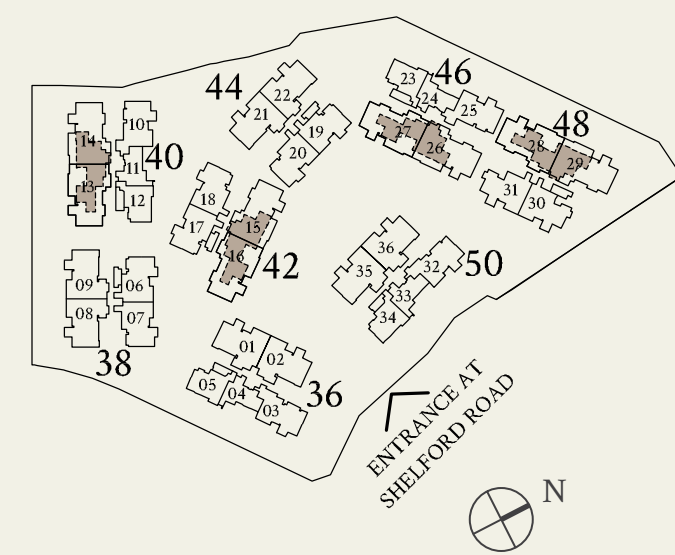
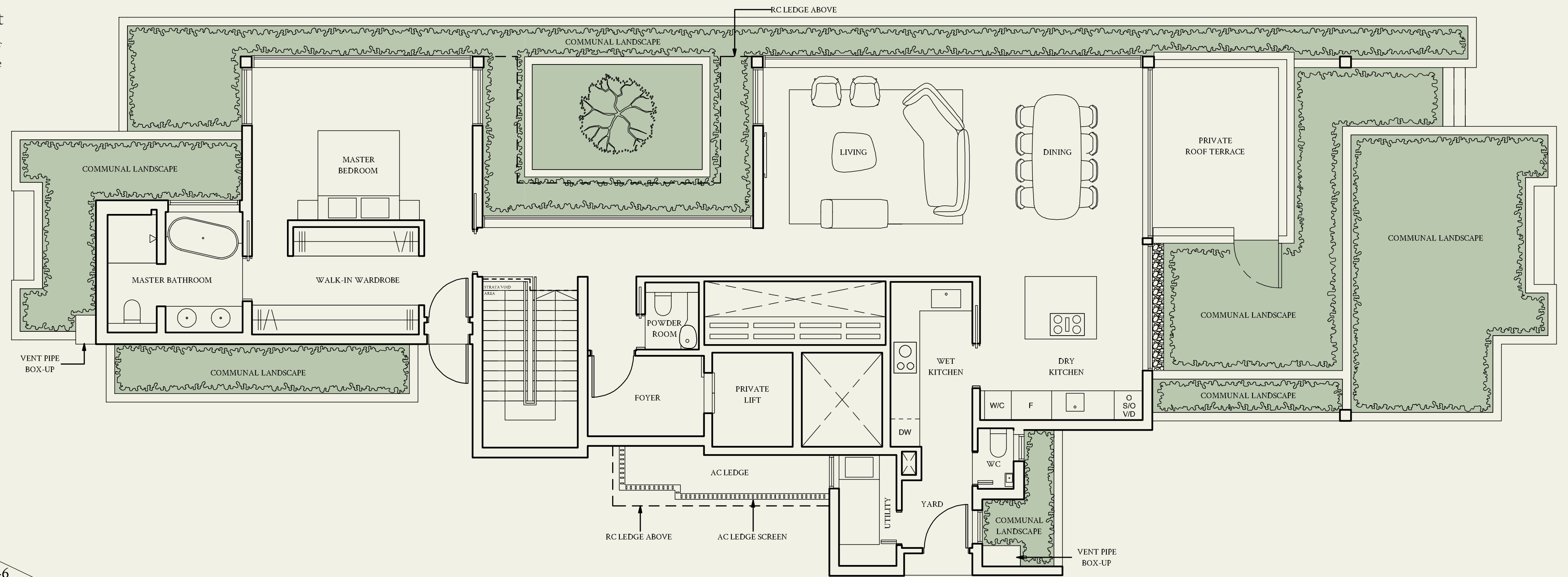
Penthouse

TYPE PH3
Upper Level

379 sqm | 4080 sqft

Inclusive of strata void area of
9 sqm / 97 sqft above staircase

- #05-13
- #05-28
- #05-16*
- #05-27*



Areas include AC ledge, balcony, private enclosed space (PES) or private roof terrace (PRT), where applicable. All RC ledges are excluded from strata area and non-load bearing. The plans are subjected to change as may be required by relevant authorities. All areas and measurements stated herein as approximate and subject to final survey.

*Mirrored unit



Artist's Impression



Luxury Fittings

Watten House complements your living experience with an array of top-of-the-line fittings and appliances from renowned designer brands such as V-ZUG and Gessi. Every detail is meticulously crafted to present you with a lifestyle of peerless luxury and sophistication.



A Premium Development by Award-winning Developers



UOL Group Limited (UOL) is one of Singapore's leading public-listed property companies with total assets of about \$22 billion. The Company has a diversified portfolio of residential, commercial developments and investment properties, hotels and serviced suites in Asia, Oceania, Europe and North America. With a track record of 60 years, UOL strongly believes in delivering product excellence and quality service in all its business ventures. UOL, through its hotel subsidiary Pan Pacific Hotels Group Limited, owns three acclaimed brands namely "Pan Pacific", PARKROYAL COLLECTION and PARKROYAL. The Company's Singapore-listed property subsidiary, Singapore Land Group Limited, owns an extensive portfolio of prime commercial assets and hotels in Singapore.

Watten House is part of UOL Group Limited's freehold luxury masterpieces, which include Nassim Park Residences and Meyer House.



Singapore Land Group Limited (SingLand) is a premier real estate company listed since 1971. Working across a diverse portfolio of real estate including commercial offices, residential and retail properties and hotels, SingLand takes a holistic approach to development. Our residential portfolio is made up of a stellar cast of properties including Mon Jervois and V on Shenton while our commercial assets include some of Singapore's best-known commercial and retail landmarks such as UIC Building, Singapore Land Tower, The Gateway and Marina Square. From setting benchmarks to building landmarks, our residential and commercial portfolios represent our dedication to creative excellence and ambition to create inclusive and sustainable environments that elevate communities towards a better future.



MEYER HOUSE

MON JERVOIS





The beauty of nature is not in its grandeur or majesty, but in its simplicity and purity. It is in the gentle curve of a blade of grass, the delicate fragrance of a flower, the soft rustling of leaves in the wind.

BASED ON TAO YUANMING'S PHILOSOPHY ON NATURE

BY PRIVATE INVITE AND APPOINTMENT ONLY

Contact your preferred PropNex Agent for more information

A PREMIUM DEVELOPMENT BY



DEVELOPER: United Venture Development (Watten) Pte. Ltd. • COMPANY REGISTRATION NUMBER: 201229569C • DEVELOPER'S LICENSE NUMBER: C1475 • TENURE OF LAND: Estate in Fee Simple • ENCUMBRANCES: Mortgage IH/207671P in favour of DBS Bank Ltd. • EXPECTED DATE OF NOTICE OF VACANT POSSESSION: 30 JUNE 2027 • EXPECTED DATE OF LEGAL COMPLETION: 30 JUNE 2030 • LOT & MUKIM NUMBER: Lot 04813L MK 17 at Shelford Road

DISCLAIMER: While every reasonable care has been taken in preparing this brochure and in constructing the models and showflats, the developer and the marketing agent cannot be held responsible for any inaccuracies or omissions. Visual representations, models, showflat displays and illustrations, photographs, art renderings and other graphic representations and references are intended to portray only artistic impressions of the development and cannot be regarded as representation of fact. Floor areas are approximate measurements and subject to final survey. The property is subject to inspection by the relevant authorities to comply with the current codes of practice. All information, specifications, renderings, visual representations and plans are current at the time of publication and are subject to change as may be required by us and/or the competent authorities and shall not be regarded as statements or representations of facts. All plans are subject to amendments as directed and/or approved by the building authorities. All areas are approximate measurements only and subject to final survey. The Sales and Purchase Agreement shall form the entire agreement between us, the Developer and the Purchaser and shall supersede all statements, representations or promises made prior to the signing of the Sale and Purchase Agreement and shall in no way be modified by any statements, representations or promises made by us or the Marketing Agent.