



THE
HILSHORE

GREATER SOUTHERN WATERFRONT LIVING

59 FREEHOLD HILLSIDE WATERFRONT RESIDENCES

Pasir Panjang or "long sand" in Malay was our historical western coastline, home to the wealthiest families in the 20s. In time, this reclaimed waterfront port will transform once more into Singapore's future live work play district.

290 & 292 PASIR PANJANG ROAD

Luxury waterfront residences

EMBRACE NATURE

CALMING DAILY LIVING AT DOORSTEPS
TO THE GREAT OUTDOORS



TAKE THE HIGH GROUND
TWO DISTINCTIVE 5-STOREY
BLOCKS WOVEN INTO
THE TOPOGRAPHY OF THE LAND





PERCHED ON A PASIR PANJANG HILLSIDE

ENGULFED BY GREENERY

A NEW BENCHMARK IN SUBURBAN LIVING

As the sun sets, we gaze the horizon as it glows into a shade of alluring blue while the distance between vanishes into grey as night falls.



ARCHITECT'S STATEMENT

The proposed architectural design embodies a nuanced fusion of vertical massing and harmonious integration with the natural landscape. The division into two blocks, complemented by a central courtyard, serves as both an organizational framework and a hub for social interaction. This configuration not only establishes a coherent design language but also optimizes ventilation and natural light throughout the development.

The tandem arrangement of volumes at the front and rear, distinguished by a brown facade, not only contributes to the aesthetic identity of The Hillshore but also acts as anchor points, framing the tower facade and unifying Blocks 1 and 2.



The central courtyard, beyond its visual appeal, plays a crucial role in environmental design. Functioning as a conduit for natural ventilation from basement to attic, it creates a continuous channel for air circulation, doubling as a grand drop-off area. This thoughtful arrangement ensures a seamless convergence of elemental forces for an enriched spatial experience.

Within the stacked mass, the inner courtyard transforms into a haven for local recreation, providing residents with a dedicated space for leisure within the development.

In essence, the design achieves a delicate balance between form and function, encapsulating The Hillshore's unique character while fostering a sophisticated living environment with a focus on simplicity and experiential richness.



Artist's Impression



An oasis of
QUIET REFLECTION



A COOL DIP
LOST IN THOUGHTS

A MEDIATION ON WHAT LIFE CAN BE



CHERISH MOMENTS
SPENT TOGETHER



THE OPULENCE
OF ALFRESCO
PRIVATE DINING



Artist's Impression

REFLECT AND RENEW

ESCAPE FROM EVERYDAY DISTRACTIONS

LIVE IN THE MOMENT





- + 30KM OF COASTLINE
- + 2,000HA OF WATERFRONT LAND
- + 2,00HA+ NATURE NETWORK
- + 9,000 NEW HOMES
- + WORLD CLASS LEISURE & TOURIST DESTINATION



1 RELOCATION OF PORTS (By 2040)

Pasir Panjang Terminal will be freed up to be part of the new waterfront city and a destination for tourism, commercial and residential uses.



2 EXTENSION OF PASIR PANJANG PARK

A new 2.2km section in Pasir Panjang Park will be part of a 17km route spanning from Labrador Nature Park to West Coast Park that everyone can enjoy more walking and cycling spaces

Greater Southern Waterfront

Five times the size of Marina Bay, Singapore's next great waterfront living will connect you to Marina Bay, Jurong Lake and no less than 13 parks including destination parks – HortPark, Labrador Nature Park and West Coast Park



3 PASIR PANJANG POWER DISTRICT

The power station will be moved underground to free up space for a commercial development to sit atop, turning the area into a lifestyle hub.



4 KEPPEL CLUB REDEVELOPMENT

The 48ha site will be redeveloped to house around 9,000 residential units – about 6,000 public housing flats and around 3,000 private residential units



5 LABRADOR NATURE PARK NETWORK

More than 200 hectares of green spaces will be established, adding 30km to Singapore's nature trails and park connectors.



6 SENTOSA-BRANI MASTERPLAN

The islands will be transformed into a leisure and tourism destination including world class attractions, beach experiences, expanded nature and heritage trails.



CANOPY WALK



NATURE WALK



ONE*15 MARINA SENTOSA COVE ▲

ONE*15 Marina Sentosa Cove offers world-class marina facilities and upscale lifestyle options. West Coast Park - themed as the "Play Centre in the West", is a large regional park located in the southwest of Singapore.

WEST COAST PARK ▼



SENTOSA

A sunny island in Singapore, Sentosa is home to exciting events, themed attractions, award-winning spas, lush rainforests, golden sandy beaches and resort-style hotels.

It's also Singapore's first integrated resort, Resorts World Sentosa, which operates Southeast Asia's first Universal Studios theme park.



KENT RIDGE PARK

Kent Ridge Park is a historical park and is now a great place for families and history buffs to learn about the heritage of our nation.



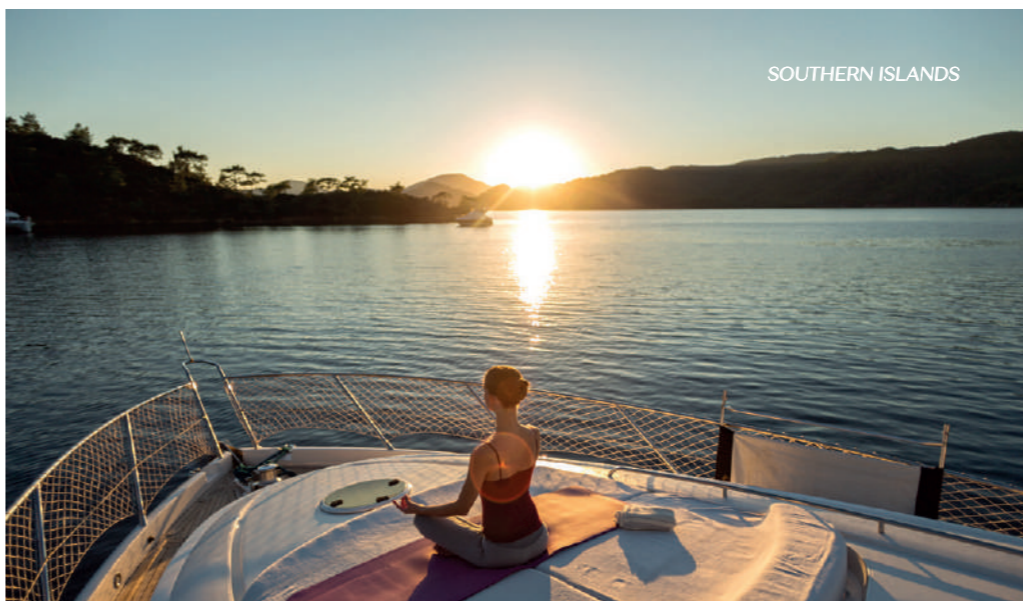
HORT PARK ▲

HortPark is a one-stop gardening resource centre that brings together gardening-related, recreational, educational, research and retail activities under one roof. Telok Blangah Hill Park elevated walkway, accessed by the metal bridge, offers the experience of walking through the secondary forest of Telok Blangah Hill at eye-level with the forest canopy.

TELOK BLANGAH HILL PARK ▼



SOUTHERN ISLANDS



PLAYGROUND AT WEST COAST PARK

MOUNT FABER ▼

One of the oldest parks in Singapore, Mount Faber Park is a popular tourist destination, offering visitors a host of activities. Take a cable car from Mount Faber to Sentosa Island and enjoy the stunning view of the horizon from above.



HENDERSON WAVES ▲

Standing 36 metres above Henderson Road, it is the highest pedestrian bridge in Singapore, and is frequently visited for its artistic wave.

THE HILSHORE





WELL-CONNECTED TO BRING YOU EVERYWHERE IN MINUTES



1 min walk Future Park Connector
 13 mins walk West Coast Park
 2 MRT stops Labrador Nature Park / Berlayer Creek
 3 mins drive Pasir Panjang Park
 4 mins drive Kent Ridge Park



1 MRT stop Pasir Panjang Food Centre
 2 MRT stops Gillman Barracks
 4 MRT stops Seah Im Food Centre



2 MRT stops Alexandra Retail Centre
 3 MRT stops The Star Vista
 4 MRT stops VivoCity / Holland Village
 8 MRT stops Orchard Shopping Belt
 9 MRT stops Marina Bay Sands
 14 mins drive Sentosa



1 MRT stop National University Hospital
 2 MRT stops One-north
 7 MRT stops Central Business District
 1 min drive Singapore Science Park II
 5 mins drive Mapletree Business City
 6 mins drive Singapore Science Park I



2 MRT stops INSEAD
 3 mins drive National University of Singapore
 8 mins drive Fairfield Methodist School (Primary)
 10 mins drive Anglo-Chinese Junior College /
 Anglo-Chinese School (Independent)
 12 mins drive United World College Of South East Asia



5 mins walk Haw Par Villa MRT Station
 2 mins drive West Coast Highway
 7 mins drive Ayer Rajah Expressway

THE HILSHORE

ONE-NORTH

NATIONAL UNIVERSITY OF SINGAPORE

NATIONAL UNIVERSITY HOSPITAL

SINGAPORE SCIENCE PARK I

CENTRAL BUSINESS DISTRICT

SINGAPORE SCIENCE PARK II

KENT RIDGE PARK HORTPARK

MOUNT FABER PARK

VIVOCITY

SENTOSA-BRANI MASTERPLAN

MAPLETREE BUSINESS CITY

LABRADOR NATURE RESERVE

PASIR PANJANG MRT STATION

PASIR PANJANG FOOD CENTRE

HAW PAR VILLA MRT STATION

PASIR PANJANG PARK

GREATER SOUTHERN WATERFRONT - PASIR PANJANG PSA TERMINAL (Moving By 2040)

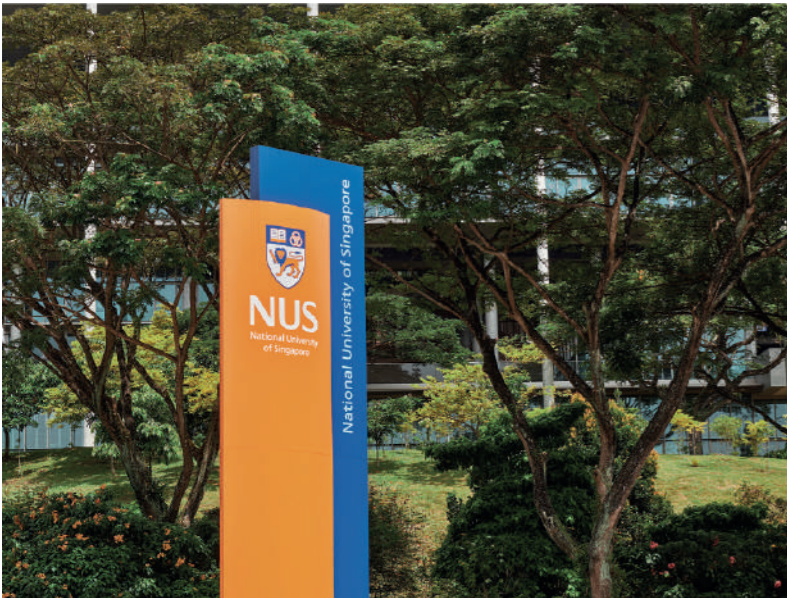


YOU ARE NEVER BORED OR HUNGRY

DISTANCE BETWEEN YEARNING
AND INDULGING IS MEASURED IN MINUTES



A little knowledge may be a dangerous thing. Your child will have a better start picking from desired schools in the neighbourhood while the older child immerse into that enclave of higher learning round the corner.



YOU BELONG TO THE CITY

Go east go west. Downtown in either direction. Short ride to Mapletree Business City, VivoCity and Central Business District or the future Jurong Lake District.





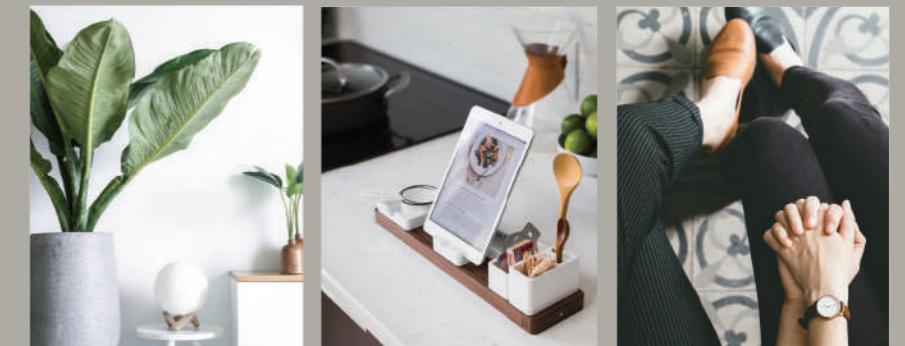
DESIGNED TO BE OCCUPIED

TYPE B2-PH LIVING & DINING
Artist's Impression



TYPE B1-PH MASTER BATHROOM
Artist's Impression

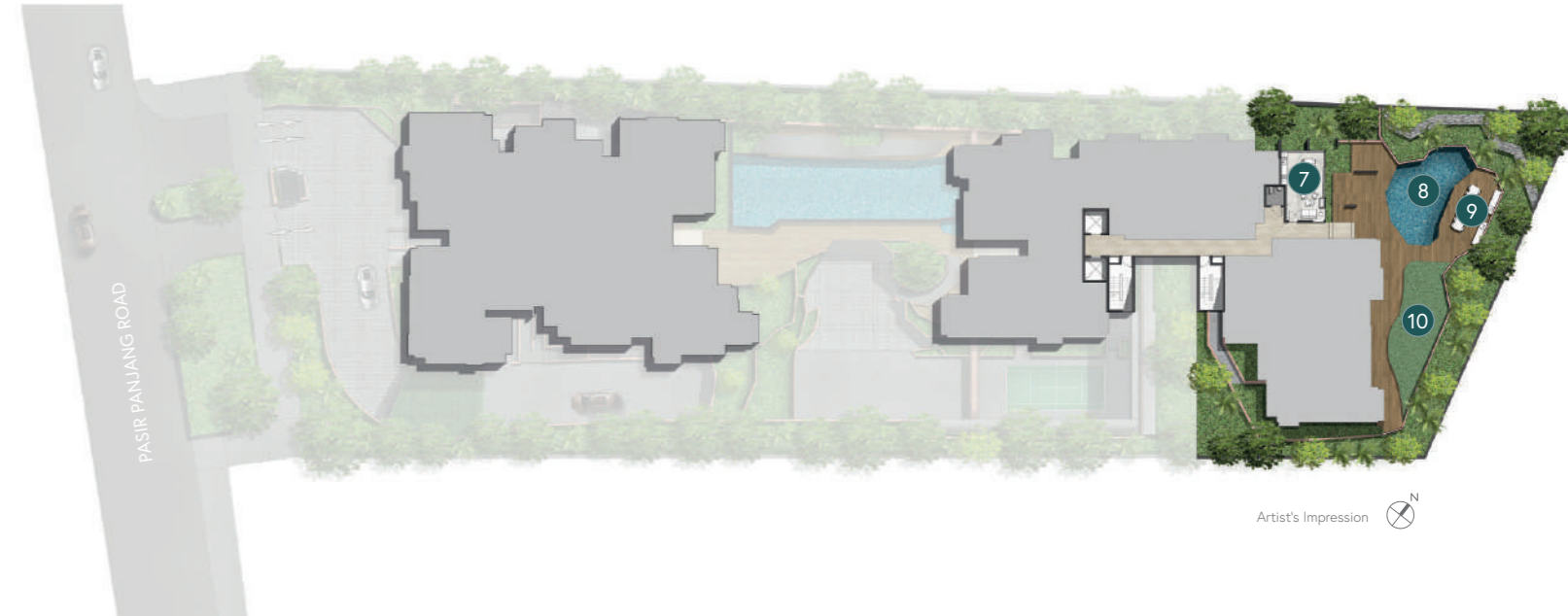
Choose from a selection of 2 to 4-bedder layouts. Luxurious interiors of subtle opulence, handsome fittings and bespoke appliances exclusively provided.



SITE PLAN



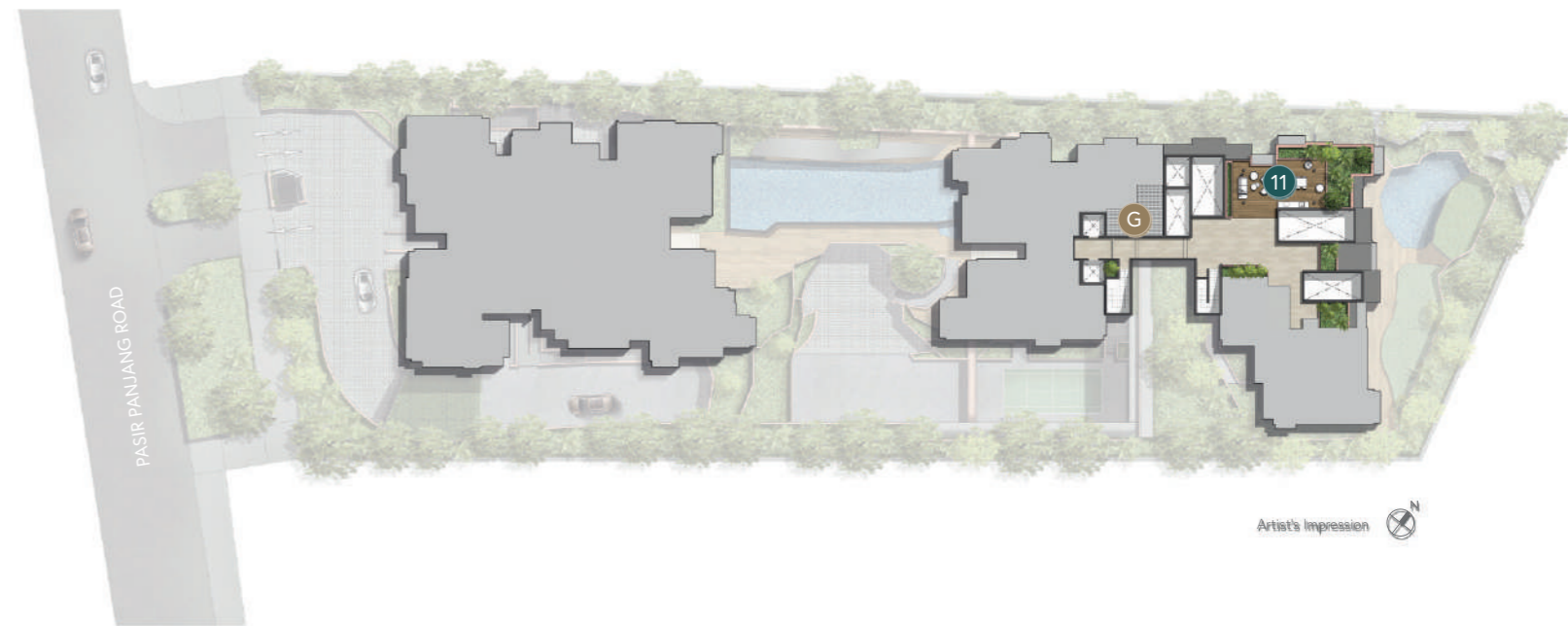
292 LEVEL 3



LANDSCAPE DECK



292 LEVEL 5



FACILITIES

- | | | |
|---------------------|-----------------------|----------------|
| 1 ARRIVAL COURTYARD | 5 JACUZZI | 8 PLAY POOL |
| 2 BADMINTON COURT | 6 GYMNASIUM | 9 BBQ PAVILION |
| 3 SWIMMING POOL | 7 HILLSHORE CLUBHOUSE | 10 PLAY COVE |
| 4 POOL DECK | | 11 SKY GRILL |

ANCILLARY

- | | |
|--|---------------------------|
| A GUARD HOUSE | D SUBSTATION (BASEMENT 2) |
| B PEDESTRIAN GATE | E BIN CENTER (BASEMENT 2) |
| C DRIVEWAY TO ARRIVAL COURTYARD/
BASEMENT 1 CARPARK | F M&E ROOM |
| | G WATER TANK |

DISTRIBUTION CHART

290

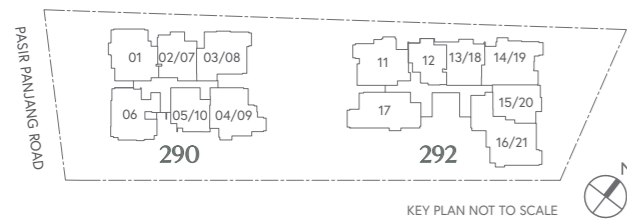
UNIT FLOOR	06	01	02/07	03/08	04/09	05/10
---------------	----	----	-------	-------	-------	-------

				B4 PH 05-08	B3 PH 05-09	A1 PH 05-10
05 UPPER	B1 PH 05-06	B2 PH 05-01	A2 PH 05-07			
05			A2 05-02	B4 05-03	B3 05-04	A1 05-05
04	B1 04-06	B2 04-01	A2 04-02	B4 04-03	B3 04-04	A1 04-05
03	B1 03-06	B2 03-01	A2 03-02	B4 03-03	B3 03-04	A1 03-05
02	B1 02-06	B2 02-01	A2 02-02	B4 02-03	B3 02-04	A1 02-05
01	B1 01-06	B2 01-01	CAR PARK / ARRIVAL COURTYARD			
BASEMENT 1	CAR PARK					

292

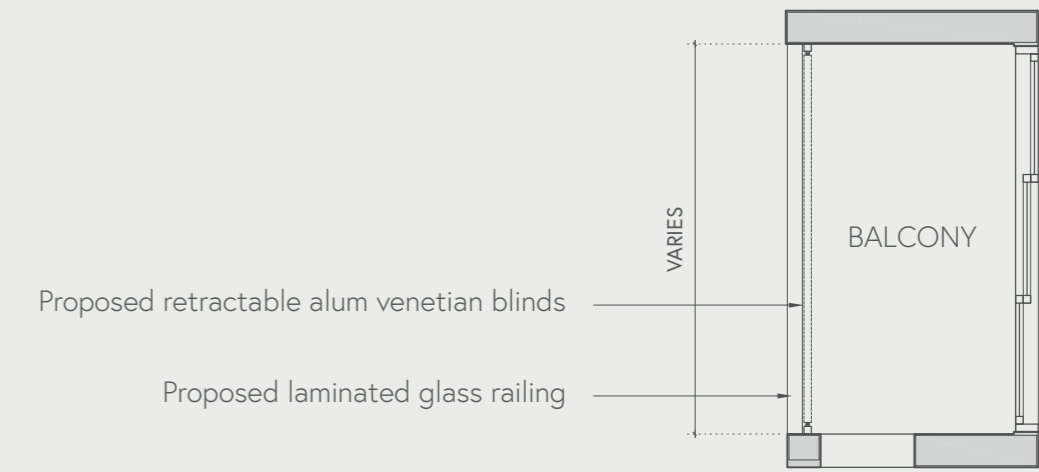
UNIT FLOOR	17	11	12	13/18	14/19	15/20	16/21
---------------	----	----	----	-------	-------	-------	-------

ROOF	FACILITIES						C1 PH 05-21
05 UPPER	B5 PH 05-17	B6 PH 05-11		A4 PH 05-18	B7 PH 05-19	A5 PH 05-20	
05			A3 PH 05-12	A4 05-13	B7 05-14	A5 05-15	C1 05-16
04	B5 04-17	B6 04-11	A3 04-12	A4 04-13	B8 04-14	A5 04-15	C1 04-16
03	B5 03-17	B6 03-11	A3 03-12	A6 03-13	MGMT OFFICE 03-14	A5 03-15	C1 03-16
02	B5 02-17	B6 02-11	A3 02-12	LANDSCAPE DECK			
01	B5 01-17	B6 01-11	LANDSCAPE DECK				
BASEMENT 1	CAR PARK / ARRIVAL COURTYARD						
BASEMENT 2	CAR PARK						

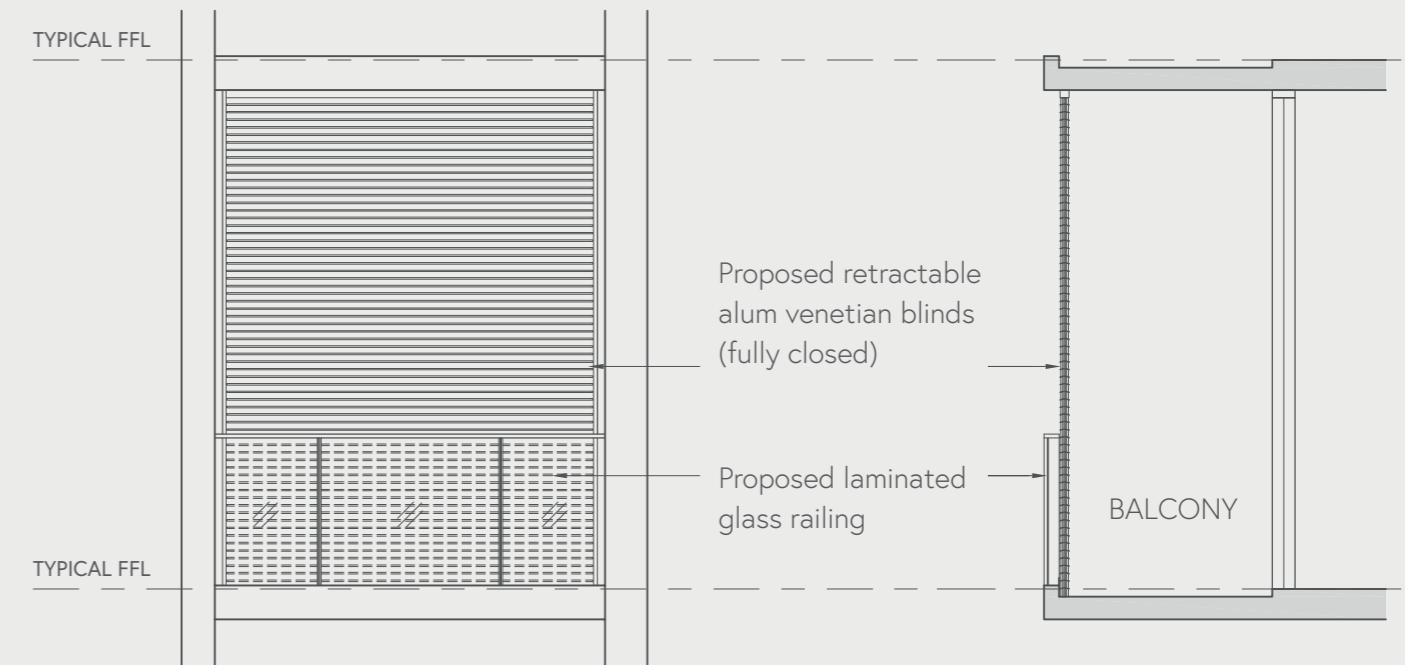


2-BEDROOM	2-BEDROOM PENTHOUSE
2-BEDROOM PREMIUM	2-BEDROOM PREMIUM PENTHOUSE
3-BEDROOM	3-BEDROOM PREMIUM PENTHOUSE
3-BEDROOM PREMIUM	4-BEDROOM PENTHOUSE
4-BEDROOM	4-BEDROOM PREMIUM PENTHOUSE

APPROVED TYPICAL BALCONY SCREEN DESIGN



TYPICAL BALCONY PART PLAN



FRONT ELEVATION

SECTION

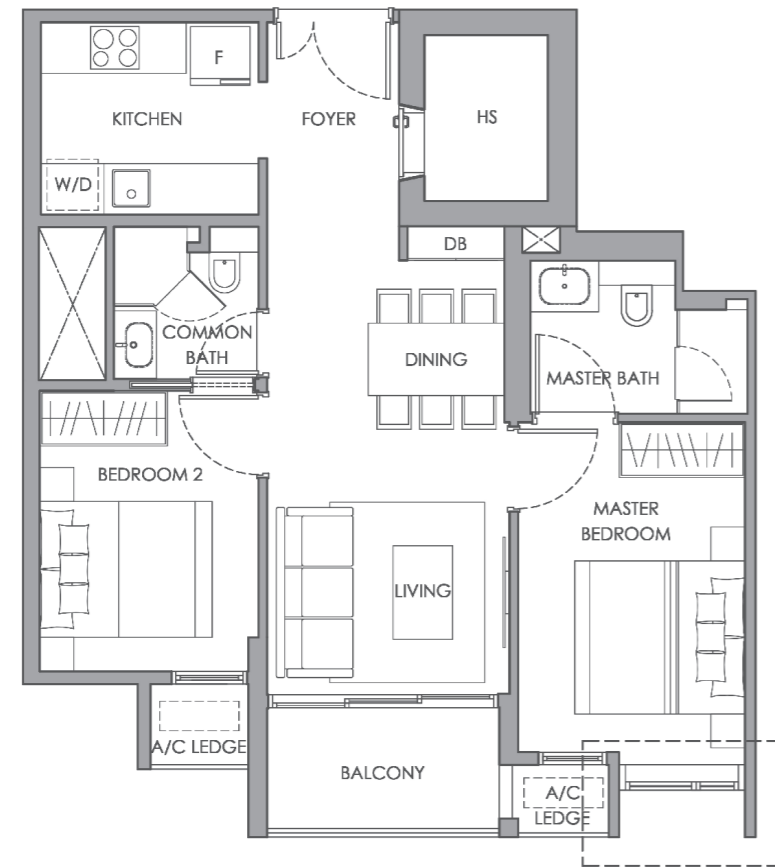
Notes

1. The balcony shall not be enclosed unless with the approved balcony screen.
2. The cost of installing the approved balcony screen is to be borne by the purchaser.
3. The balcony screen is not provided by the Developer (unless otherwise indicated on the floor plan).
4. The drawing is not drawn to scale and is solely for reference purposes only. Measurements shall be taken at the actual unit before the commencement of work. Approval from MCST is required before installation.
5. Fixing detail by the purchaser's contractor shall not damage the waterproofing of the existing structure.
6. The Purchaser shall refer to MCST for any additional details required.

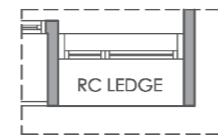
2-Bedroom

Type A1

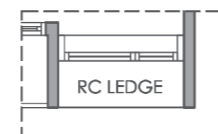
69 SQ M / 743 SQ FT
#02-05 TO #05-05



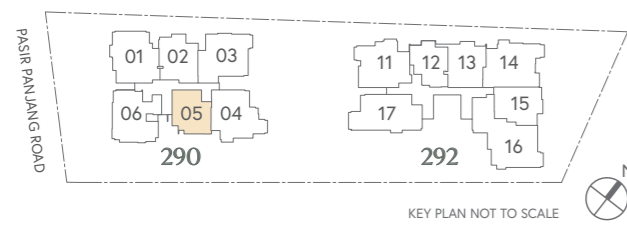
APPLICABLE TO #02-05



APPLICABLE TO #03-05 AND #05-05



APPLICABLE TO #04-05



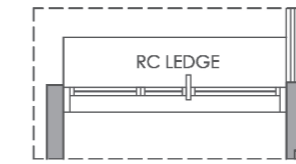
LEGEND		A/C LEDGE	- Air-Con Ledge
F	- Fridge Space	RC LEDGE	- Reinforced Concrete Ledge (Excluded from strata area)
W/D	- Washer Cum Dryer		
DB	- Distribution Board Box		
WC	- Water Closet		
HS	- Household Shelter		
			- Service Void Space (Excluded from strata area)

2-Bedroom Premium

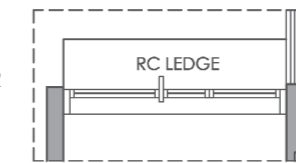
Type A2

77 SQ M / 829 SQ FT
#02-02 TO #05-02

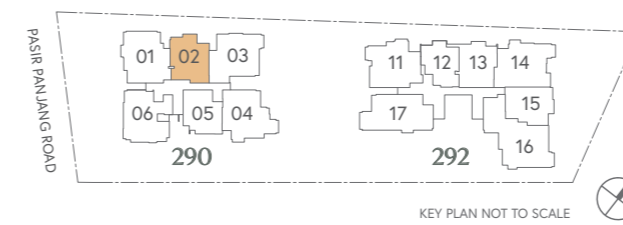
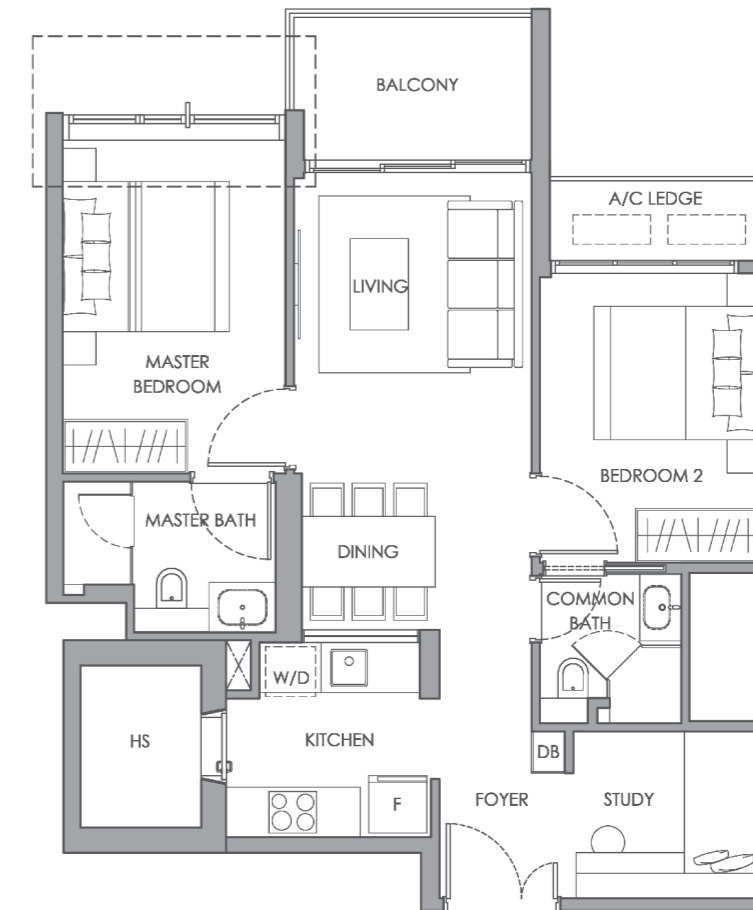
APPLICABLE TO #04-02



APPLICABLE TO #03-02 AND #05-02



APPLICABLE TO #02-02

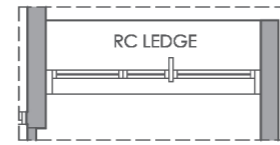


LEGEND		A/C LEDGE	- Air-Con Ledge
F	- Fridge Space	RC LEDGE	- Reinforced Concrete Ledge (Excluded from strata area)
W/D	- Washer Cum Dryer		
DB	- Distribution Board Box		
WC	- Water Closet		
HS	- Household Shelter		
			- Service Void Space (Excluded from strata area)

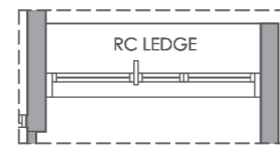
2-Bedroom

Type A3

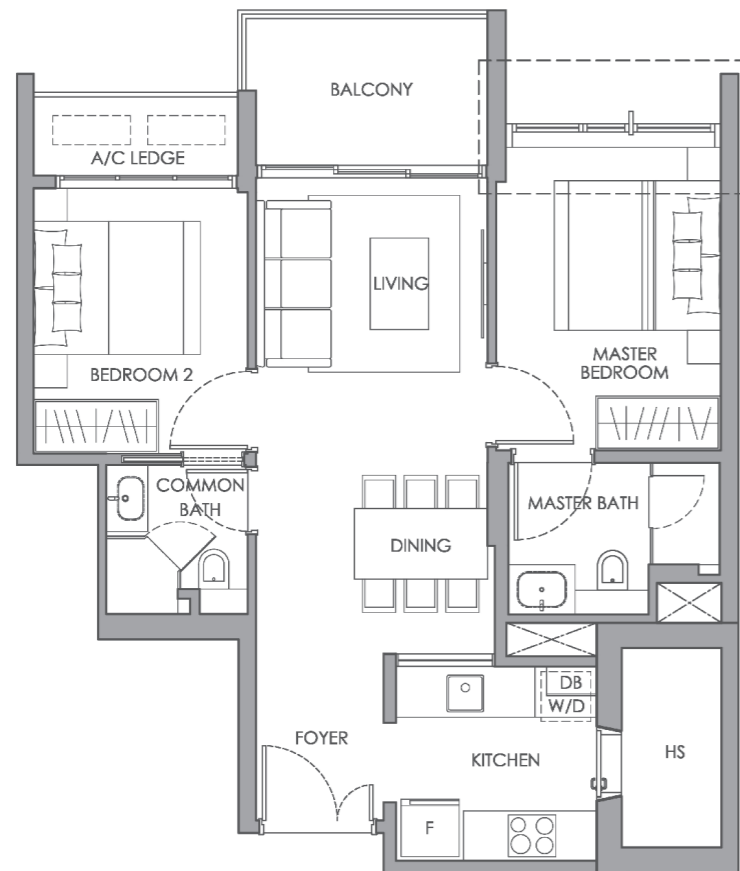
69 SQ M / 743 SQ FT
#02-12 TO #04-12



APPLICABLE TO #04-12



APPLICABLE TO #03-12



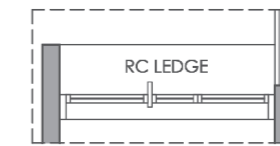
APPLICABLE TO #02-12

2-Bedroom Premium

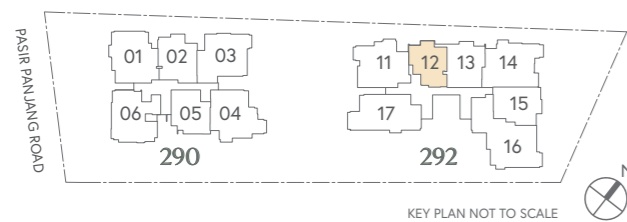
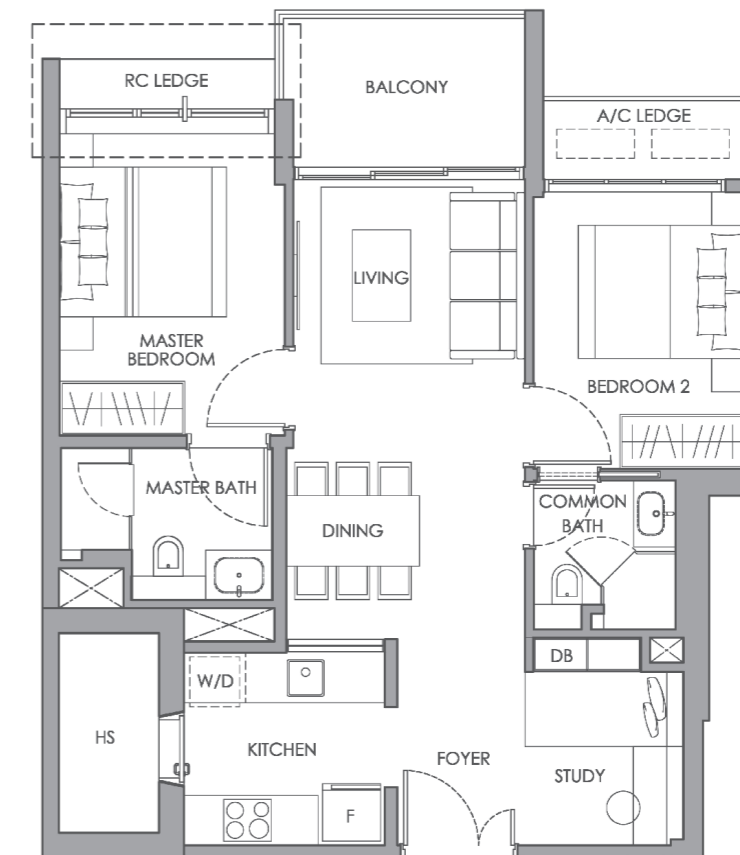
Type A4

75 SQ M / 807 SQ FT
#04-13 TO #05-13

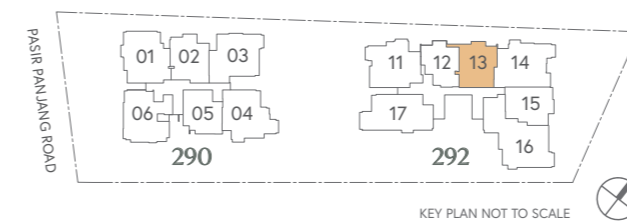
APPLICABLE TO #05-13



APPLICABLE TO #04-13



- | | | | |
|---------------|--------------------------|------------------|---|
| LEGEND | | A/C LEDGE | - Air-Con Ledge |
| F | - Fridge Space | RC LEDGE | - Reinforced Concrete Ledge (Excluded from strata area) |
| W/D | - Washer Cum Dryer | | |
| DB | - Distribution Board Box | | |
| WC | - Water Closet | | |
| HS | - Household Shelter | | - Service Void Space (Excluded from strata area) |



- | | | | |
|---------------|--------------------------|------------------|---|
| LEGEND | | A/C LEDGE | - Air-Con Ledge |
| F | - Fridge Space | RC LEDGE | - Reinforced Concrete Ledge (Excluded from strata area) |
| W/D | - Washer Cum Dryer | | |
| DB | - Distribution Board Box | | |
| WC | - Water Closet | | |
| HS | - Household Shelter | | - Service Void Space (Excluded from strata area) |

2-Bedroom Premium

Type A5

79 SQ M / 850 SQ FT

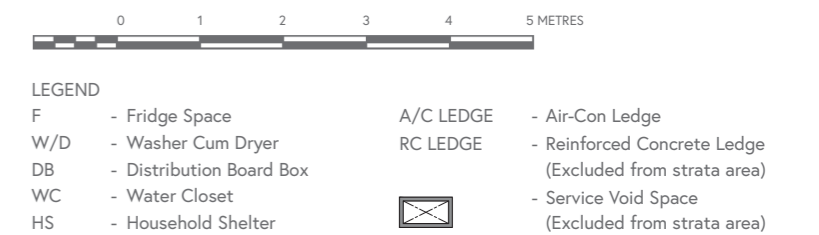
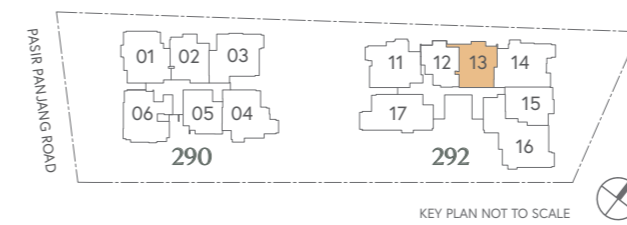
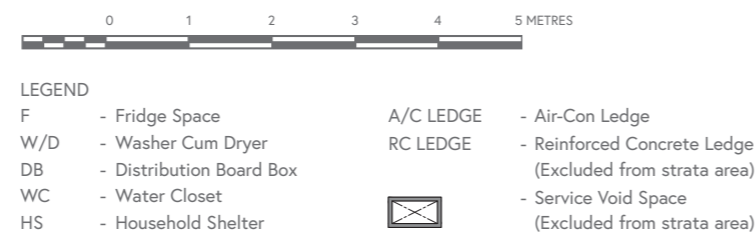
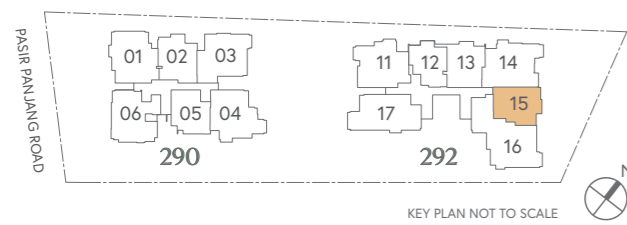
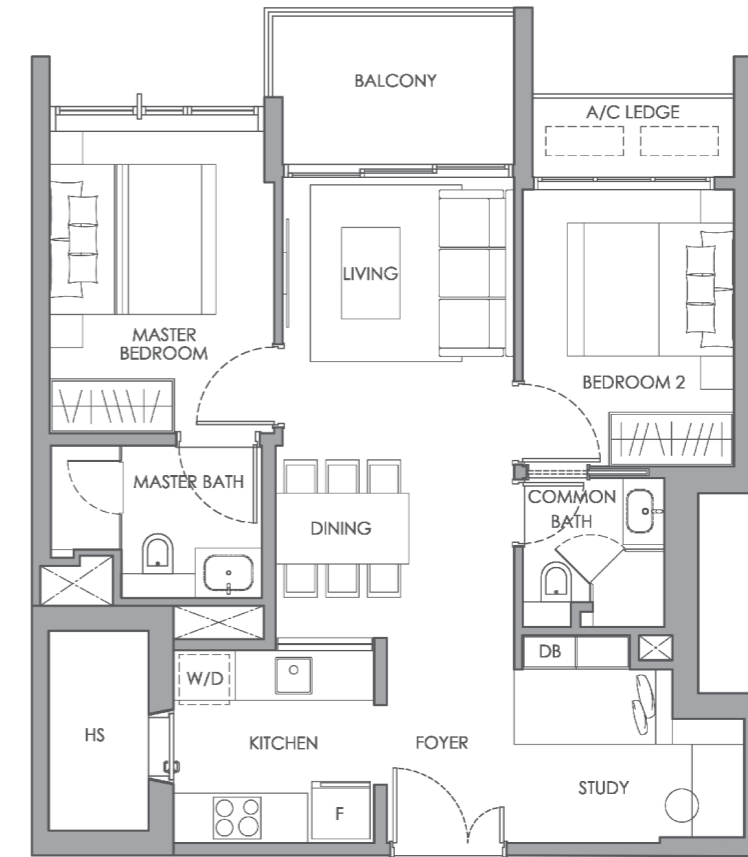
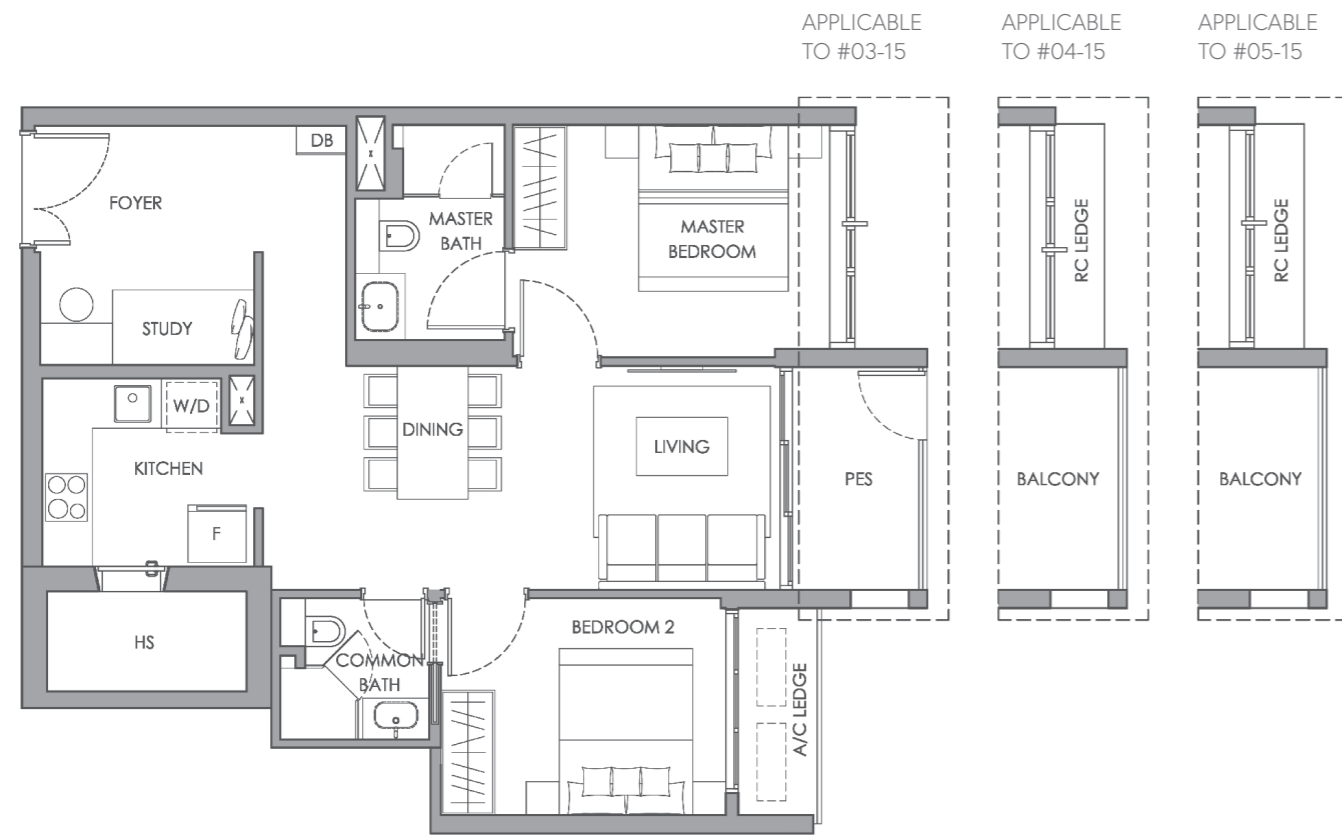
#03-15 TO #05-15

2-Bedroom Premium

Type A6

76 SQ M / 818 SQ FT

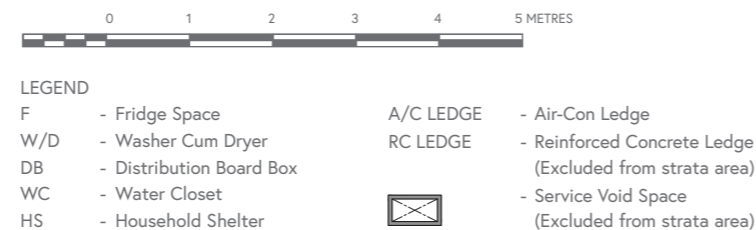
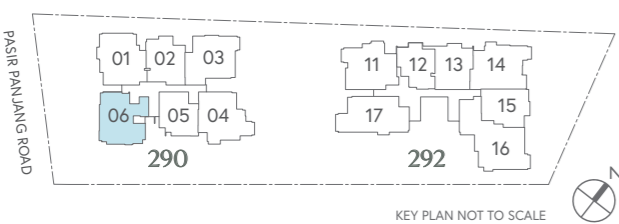
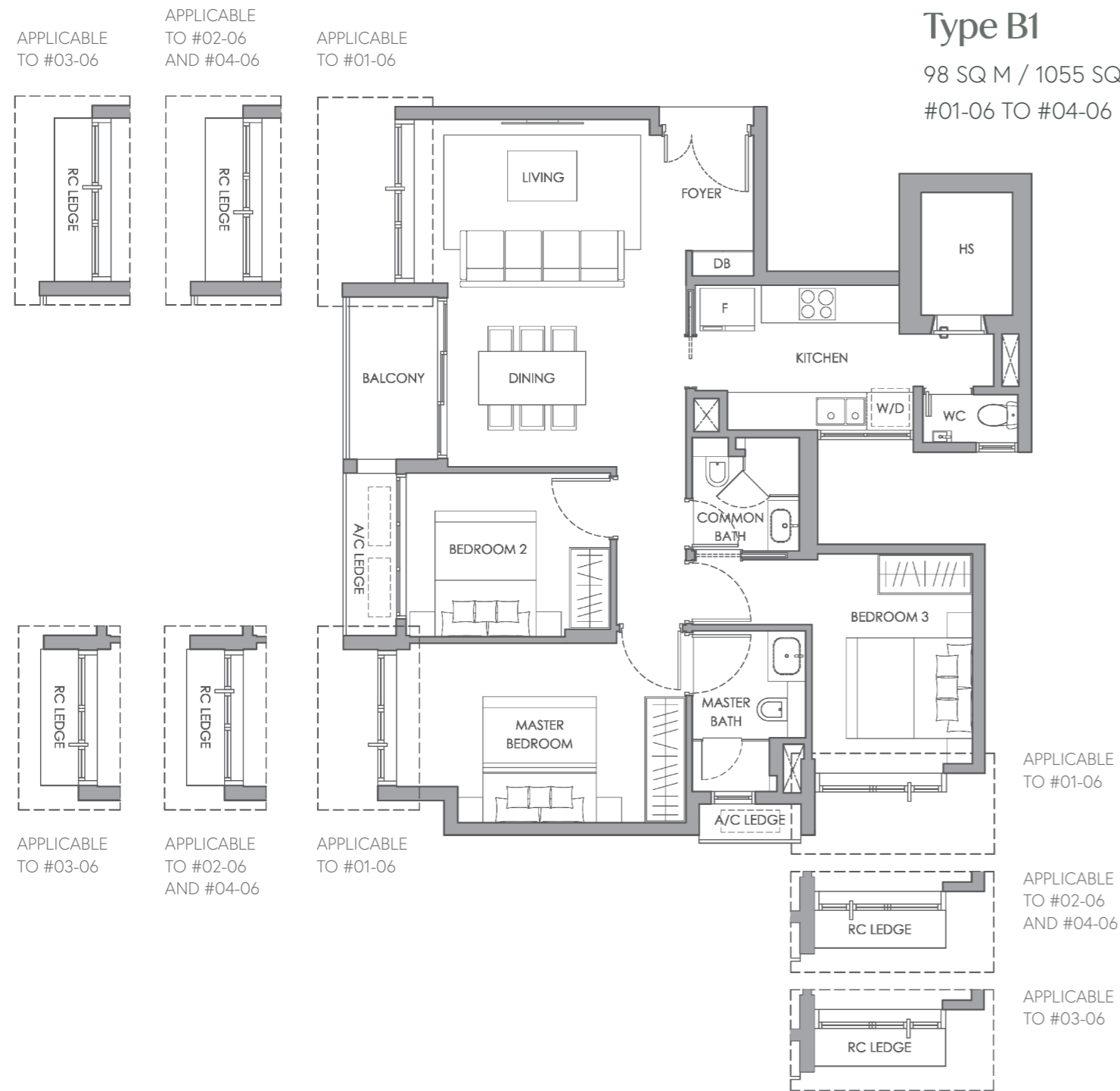
#03-13



3-Bedroom

Type B1

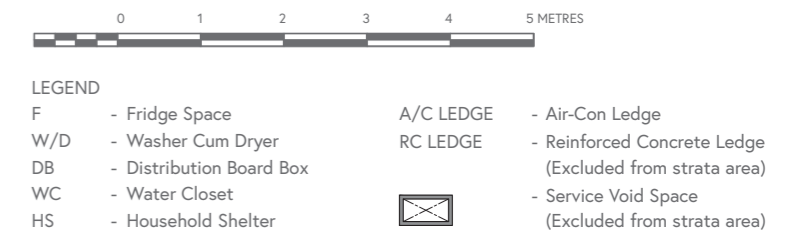
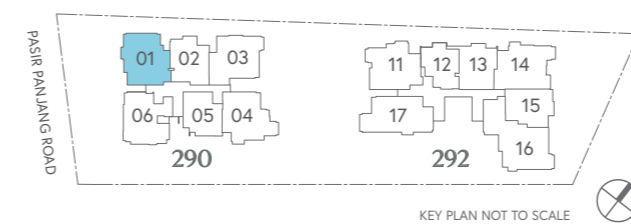
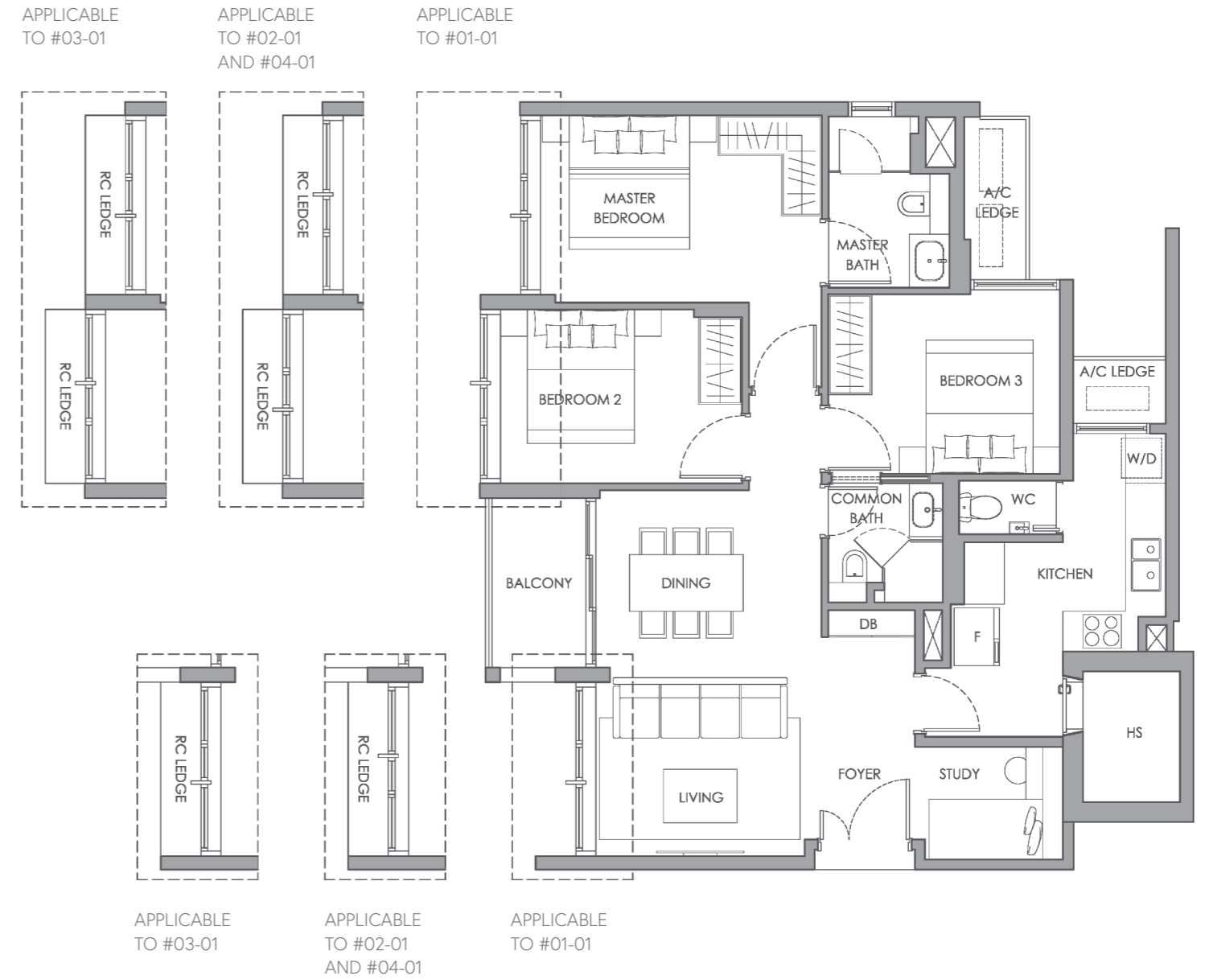
98 SQ M / 1055 SQ FT
#01-06 TO #04-06



3-Bedroom Premium

Type B2

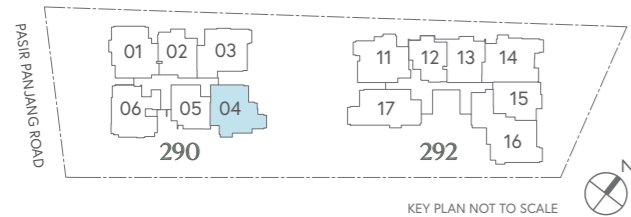
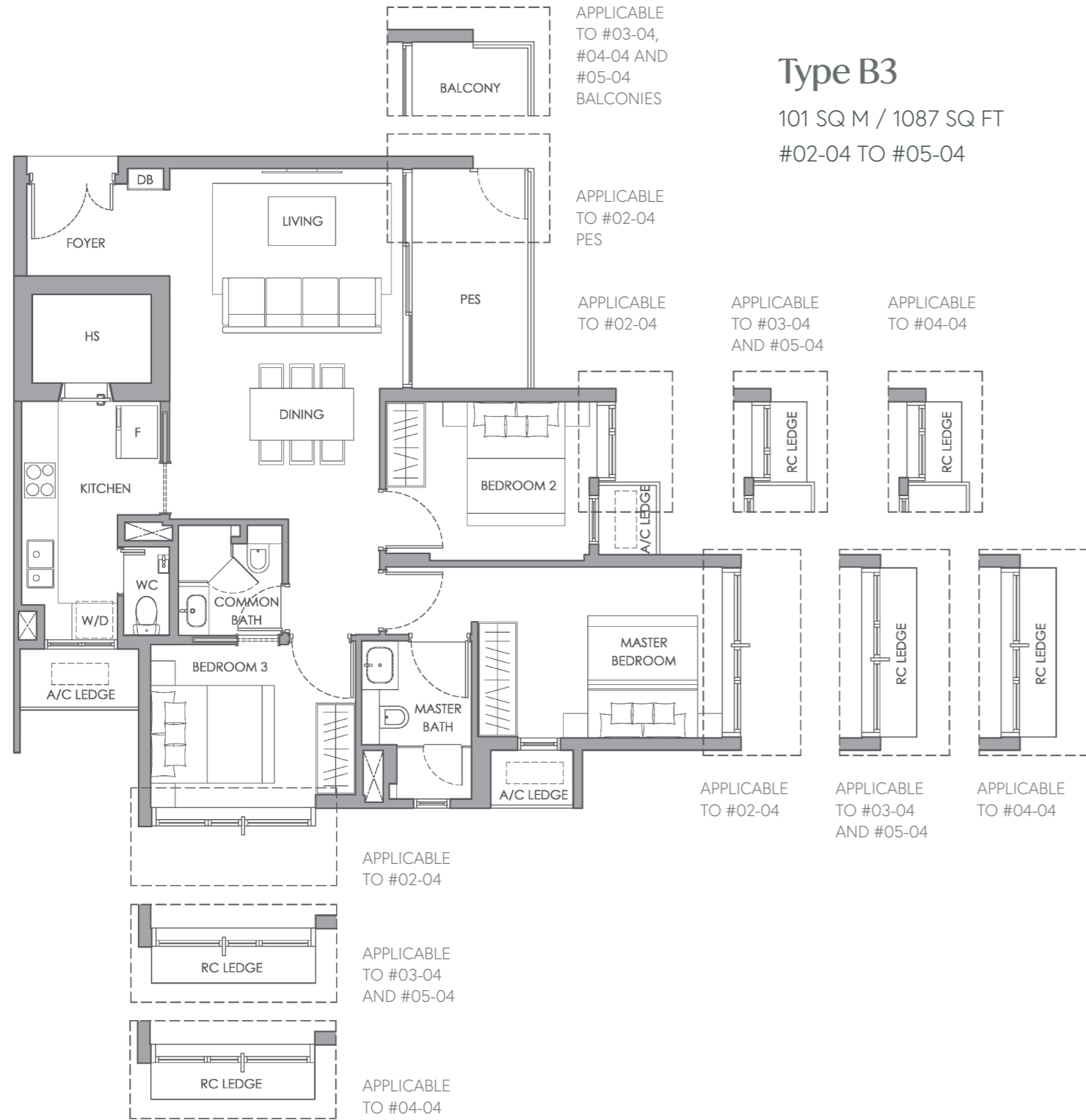
101 SQ M / 1087 SQ FT
#01-01 TO #04-01



3-Bedroom

Type B3

101 SQ M / 1087 SQ FT
#02-04 TO #05-04

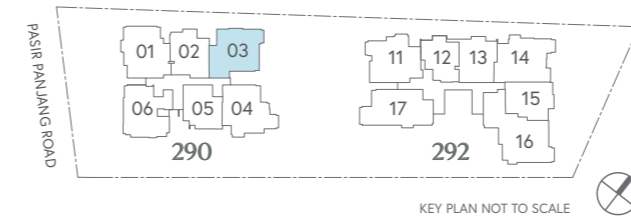
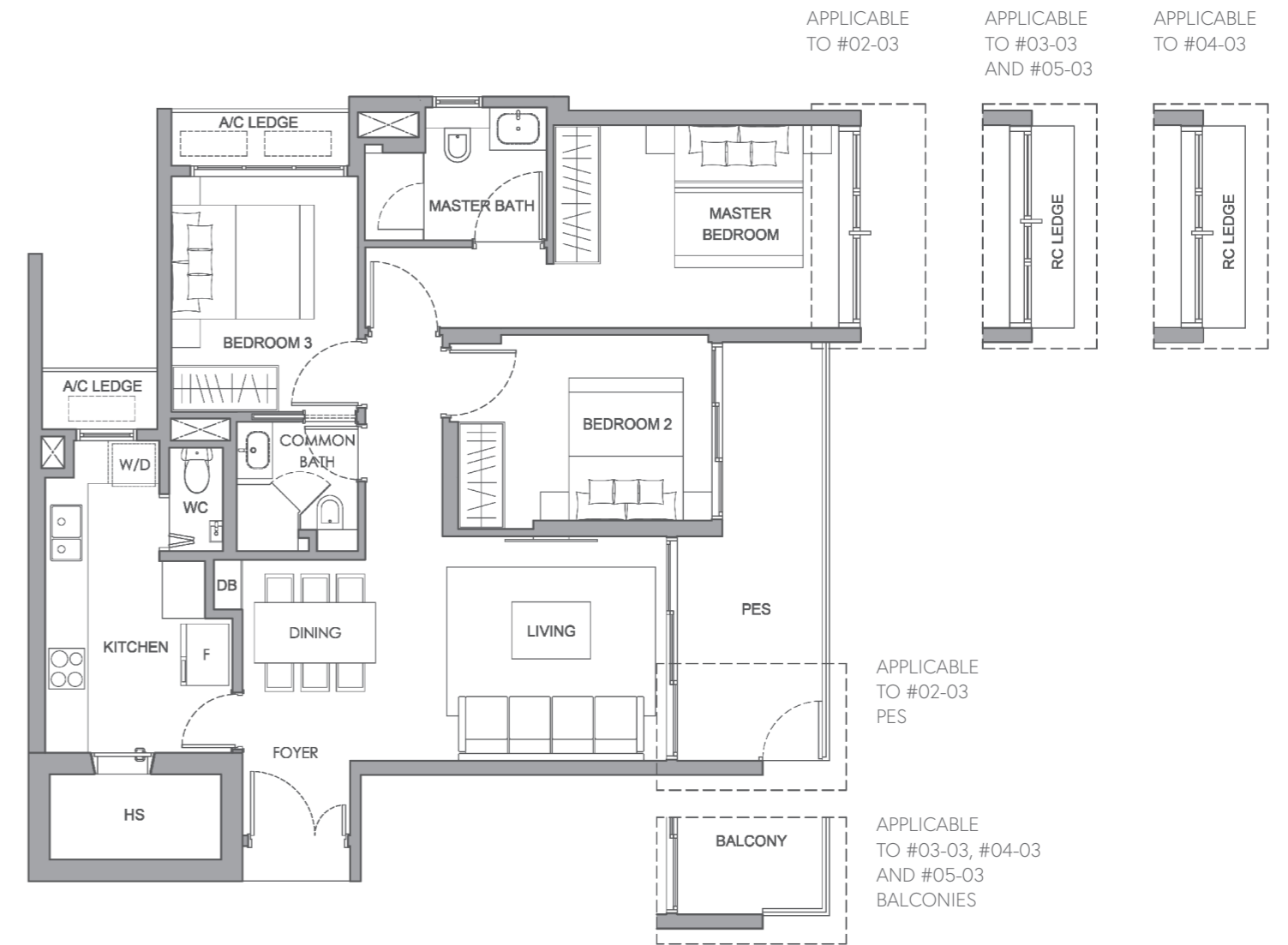


- LEGEND**
- F - Fridge Space
 - W/D - Washer Cum Dryer
 - DB - Distribution Board Box
 - WC - Water Closet
 - HS - Household Shelter
 - A/C LEDGE - Air-Con Ledge
 - RC LEDGE - Reinforced Concrete Ledge (Excluded from strata area)
 - Service Void Space (Excluded from strata area)

3-Bedroom

Type B4

103 SQ M / 1109 SQ FT
#02-03 TO #05-03

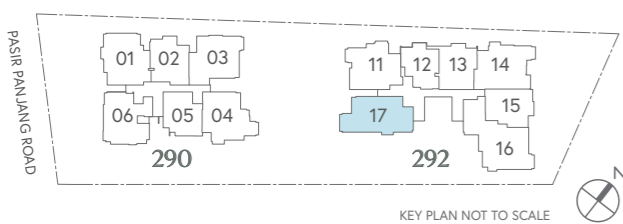
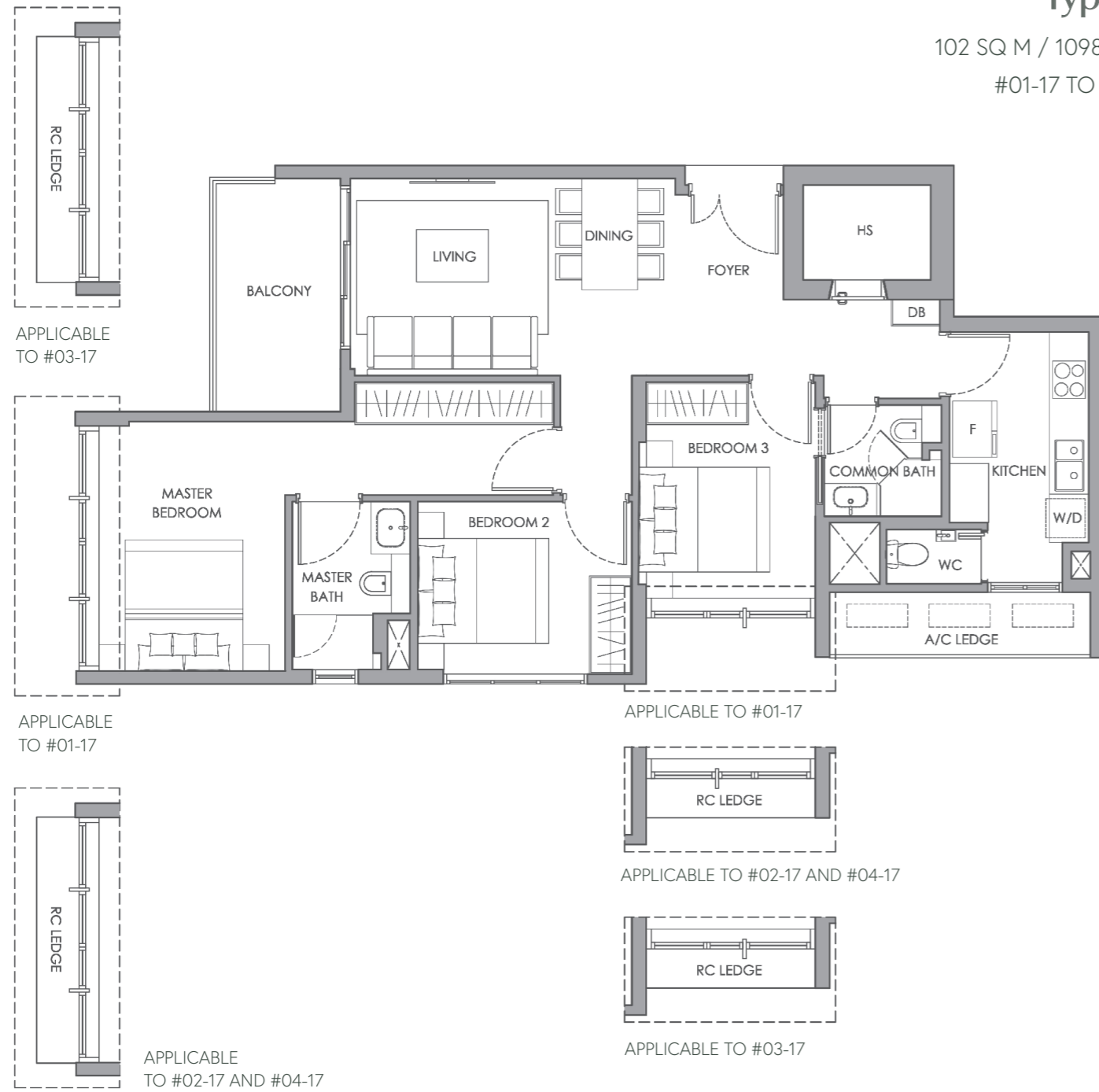


- LEGEND**
- F - Fridge Space
 - W/D - Washer Cum Dryer
 - DB - Distribution Board Box
 - WC - Water Closet
 - HS - Household Shelter
 - A/C LEDGE - Air-Con Ledge
 - RC LEDGE - Reinforced Concrete Ledge (Excluded from strata area)
 - Service Void Space (Excluded from strata area)

3-Bedroom

Type B5

102 SQ M / 1098 SQ FT
#01-17 TO #04-17

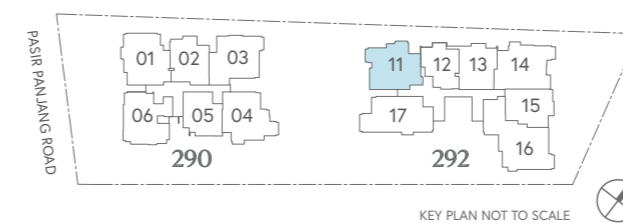
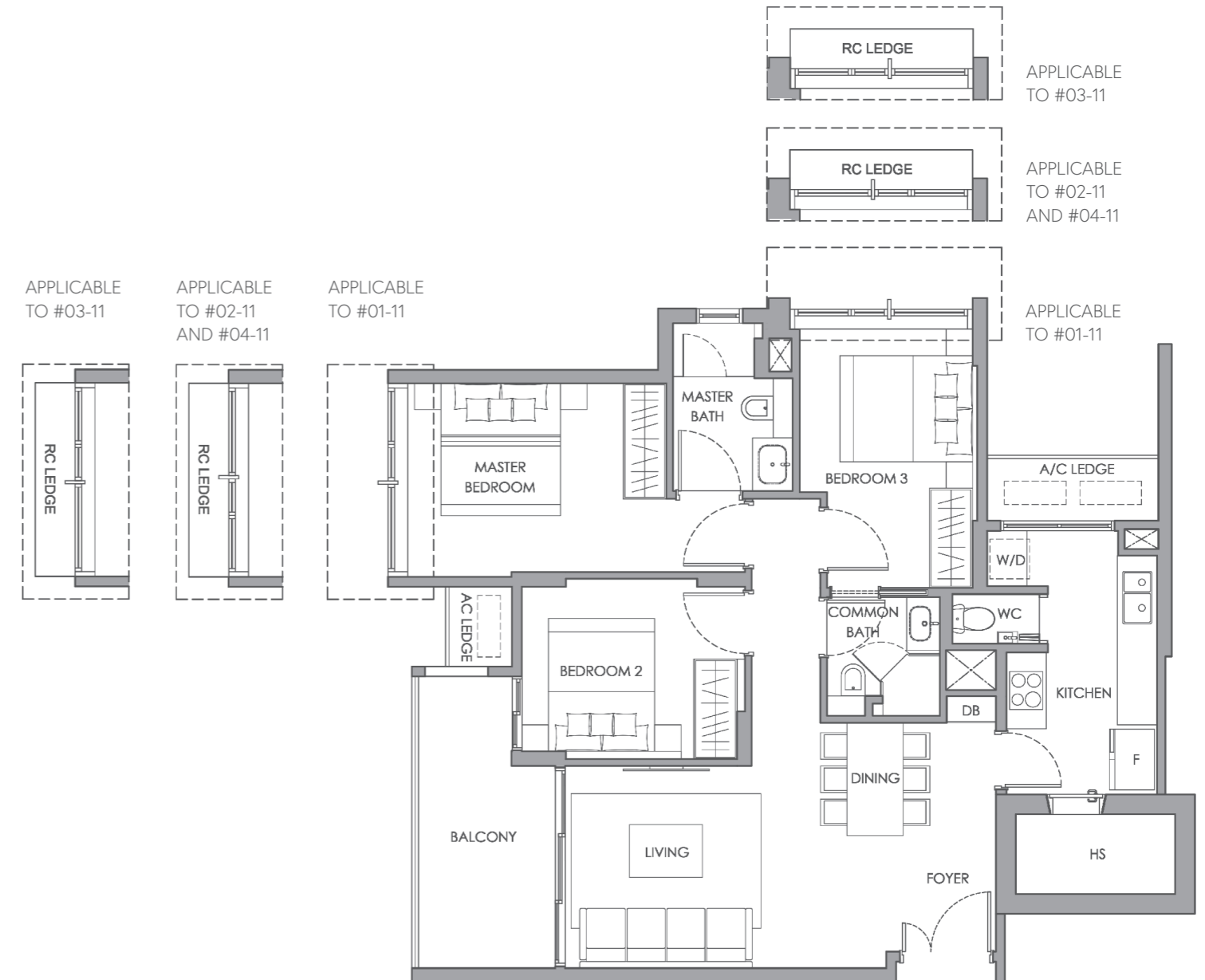


- | | | | |
|---------------|--------------------------|------------------|---|
| LEGEND | | A/C LEDGE | - Air-Con Ledge |
| F | - Fridge Space | RC LEDGE | - Reinforced Concrete Ledge (Excluded from strata area) |
| W/D | - Washer Cum Dryer | | |
| DB | - Distribution Board Box | | |
| WC | - Water Closet | | |
| HS | - Household Shelter | | |
| | | | - Service Void Space (Excluded from strata area) |

3-Bedroom

Type B6

101 SQ M / 1087 SQ FT
#01-11 TO #04-11



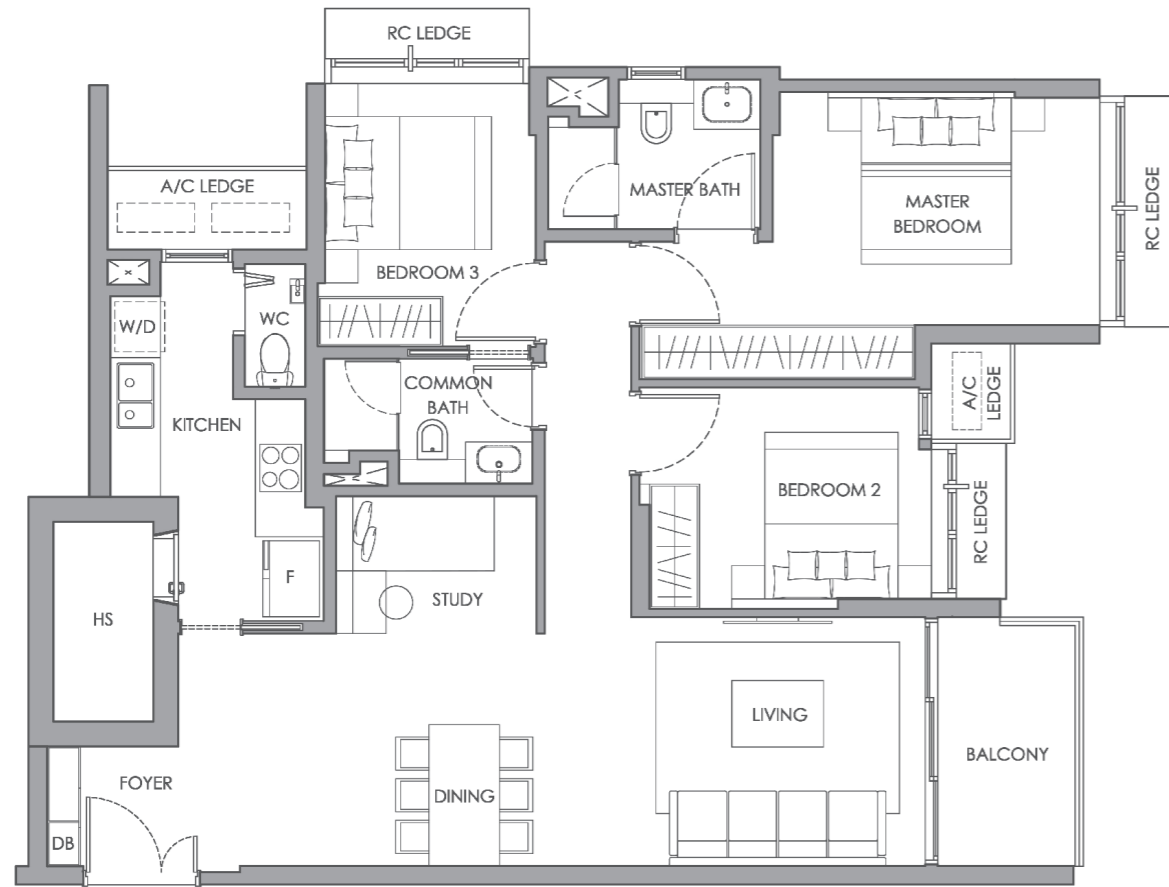
- | | | | |
|---------------|--------------------------|------------------|---|
| LEGEND | | A/C LEDGE | - Air-Con Ledge |
| F | - Fridge Space | RC LEDGE | - Reinforced Concrete Ledge (Excluded from strata area) |
| W/D | - Washer Cum Dryer | | |
| DB | - Distribution Board Box | | |
| WC | - Water Closet | | |
| HS | - Household Shelter | | |
| | | | - Service Void Space (Excluded from strata area) |

3-Bedroom Premium

Type B7

110 SQ M / 1184 SQ FT

#05-14

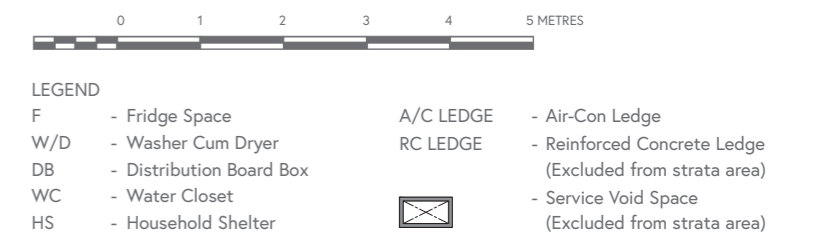
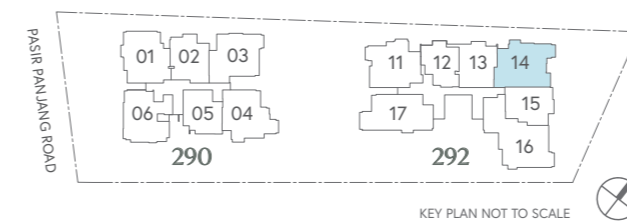
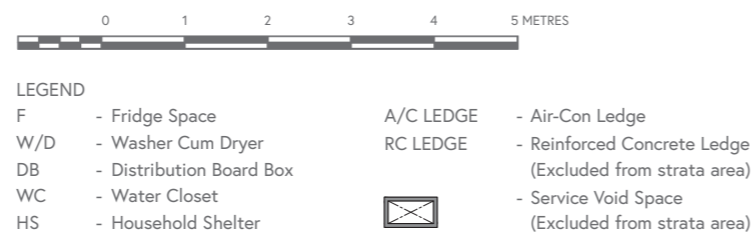
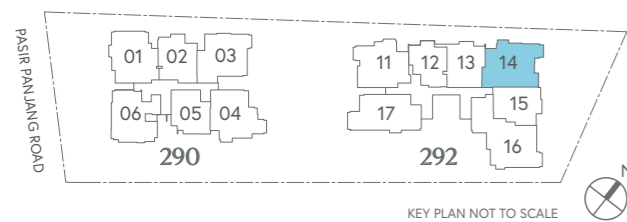
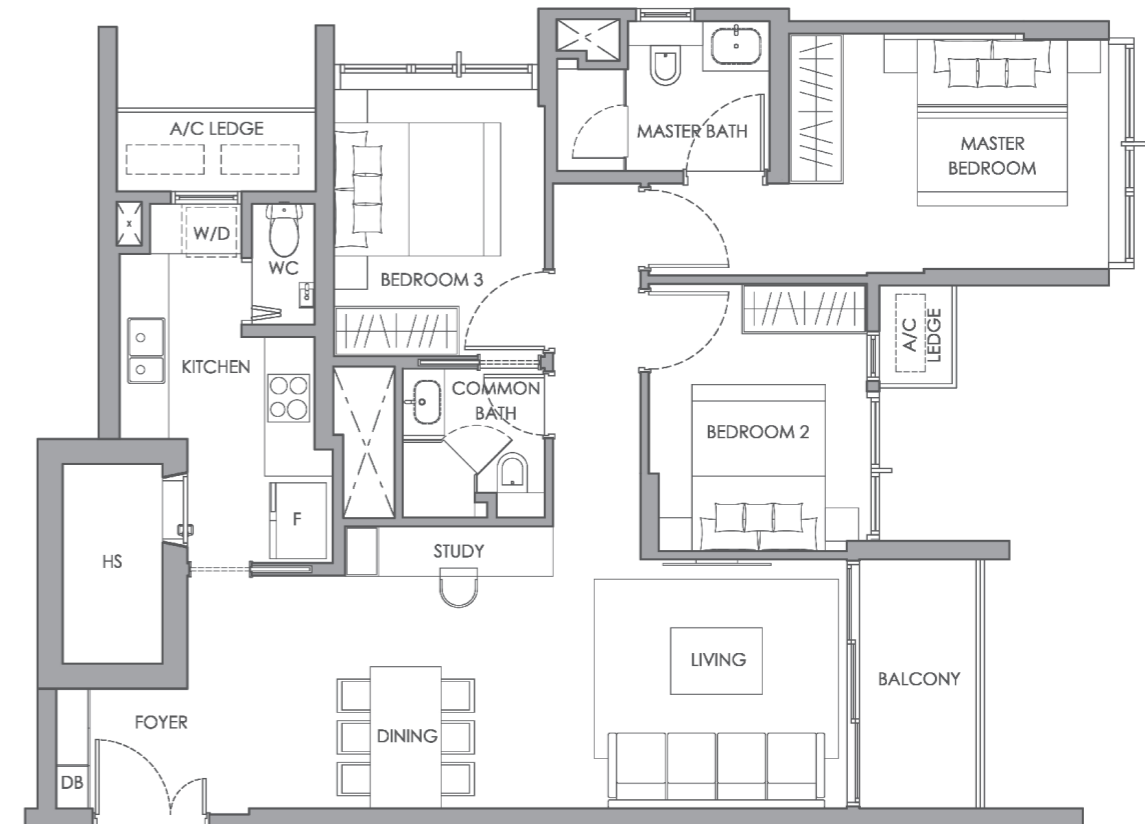


3-Bedroom

Type B8

100 SQ M / 1076 SQ FT

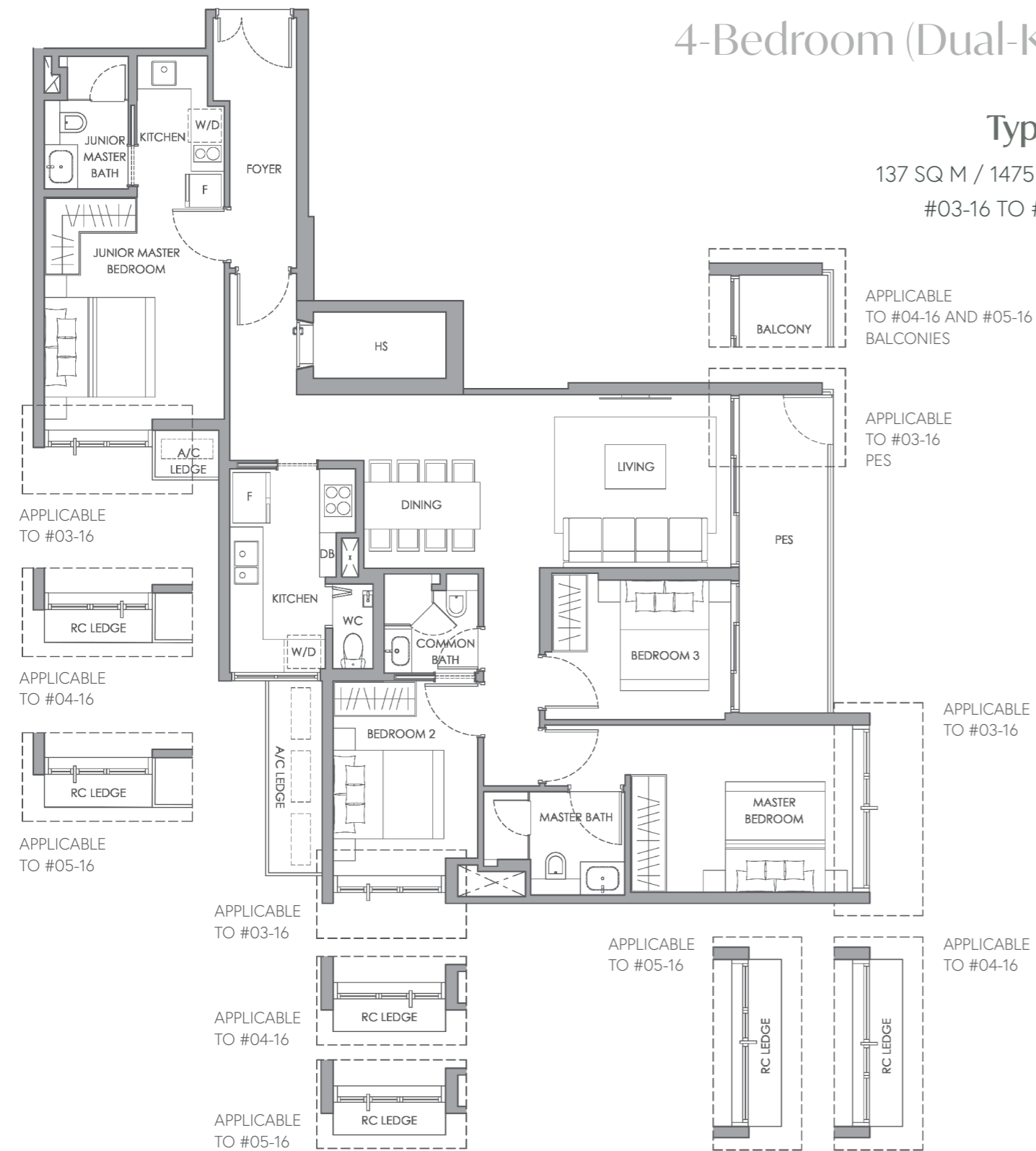
#04-14



4-Bedroom (Dual-Key)

Type C1

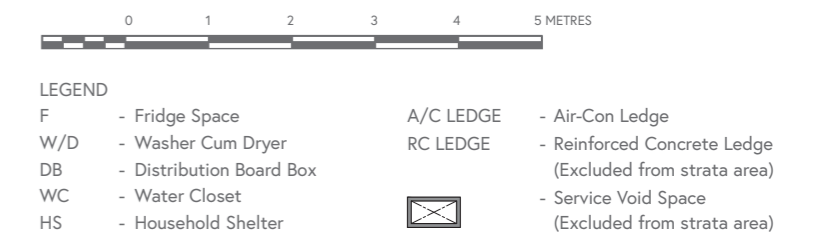
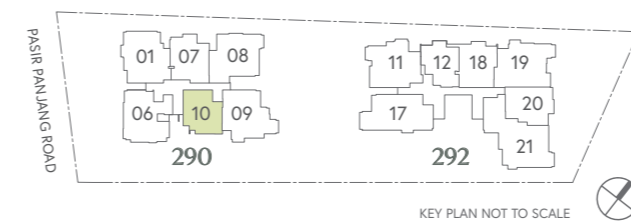
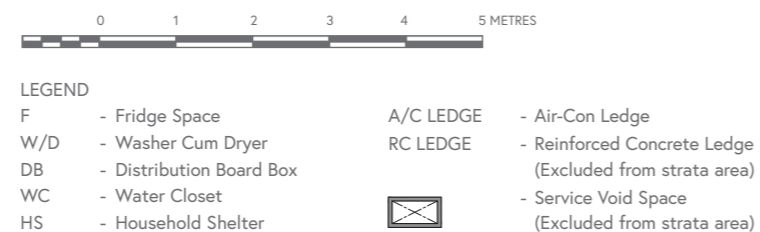
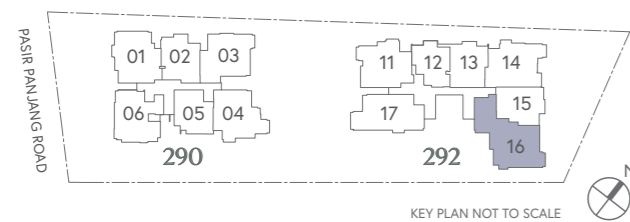
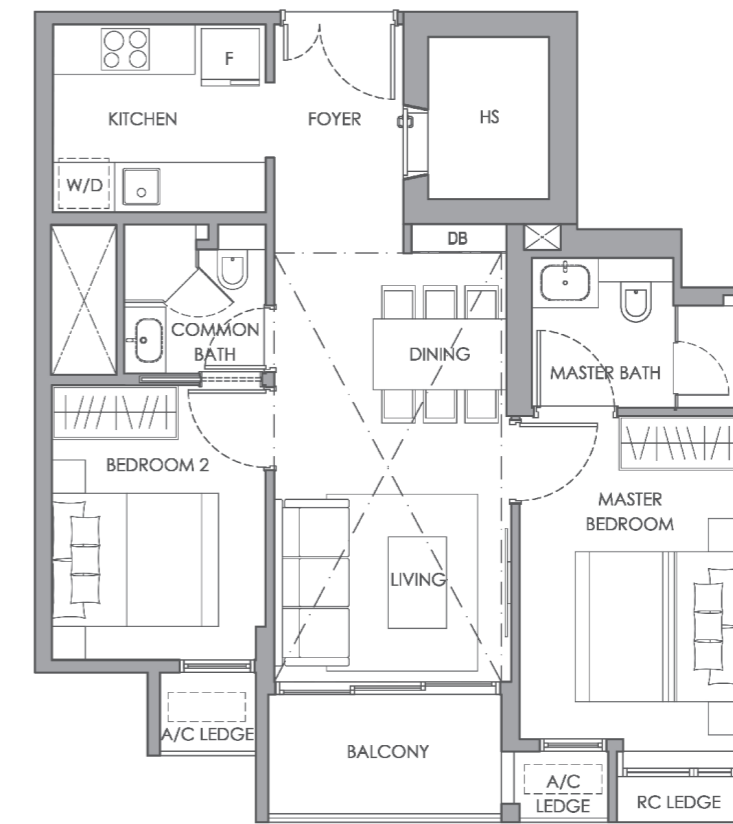
137 SQ M / 1475 SQ FT
#03-16 TO #05-16



2-Bedroom Penthouse

Type A1 PH

85 SQ M / 915 SQ FT
#05-10

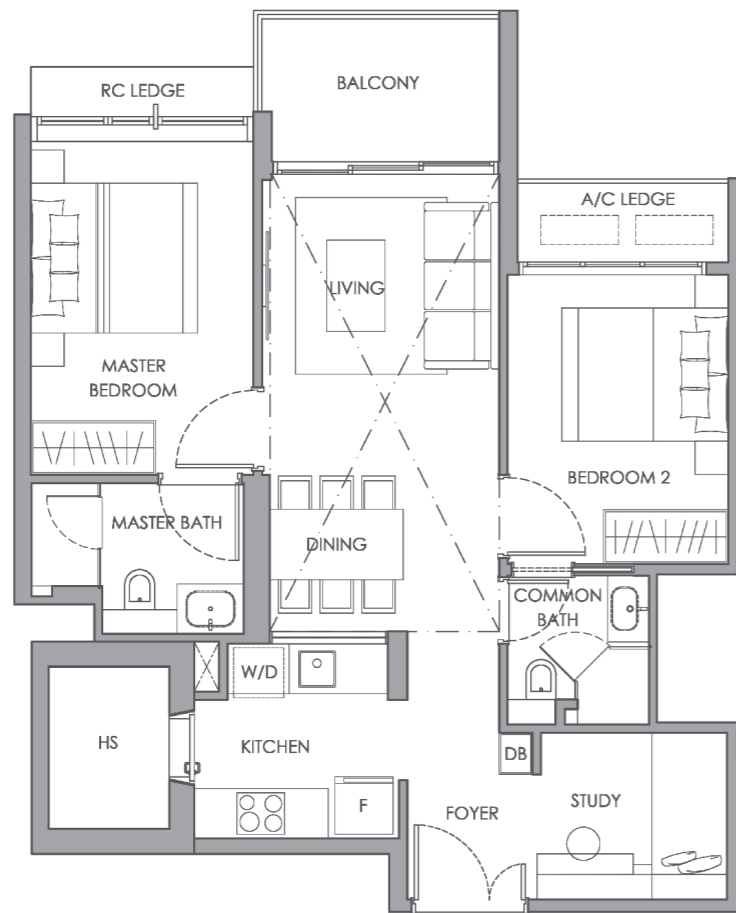


2-Bedroom Premium Penthouse

Type A2 PH

94 SQ M / 1012 SQ FT

#05-07

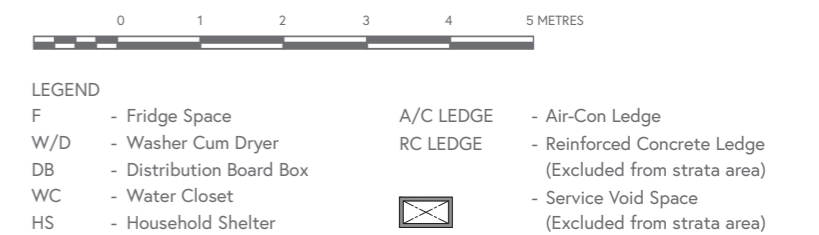
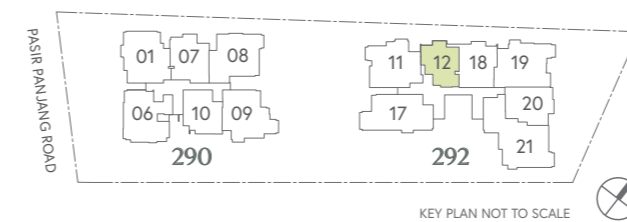
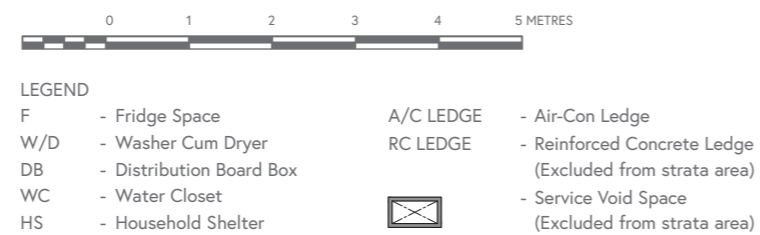
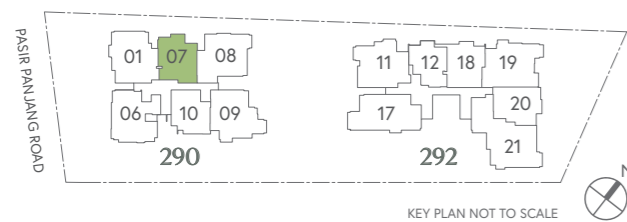
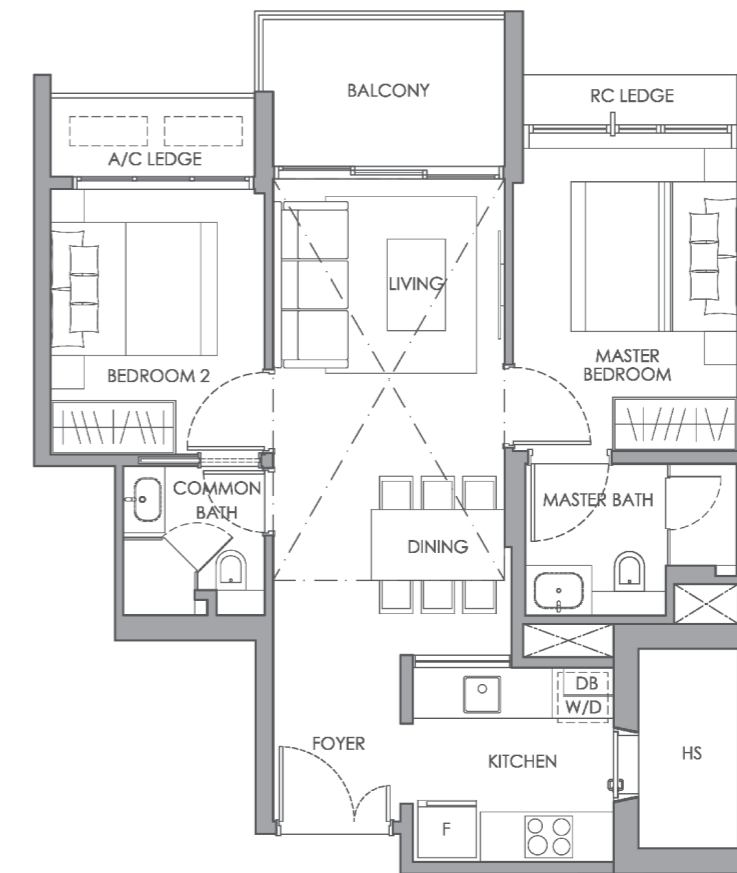


2-Bedroom Penthouse

Type A3 PH

84 SQ M / 904 SQ FT

#05-12

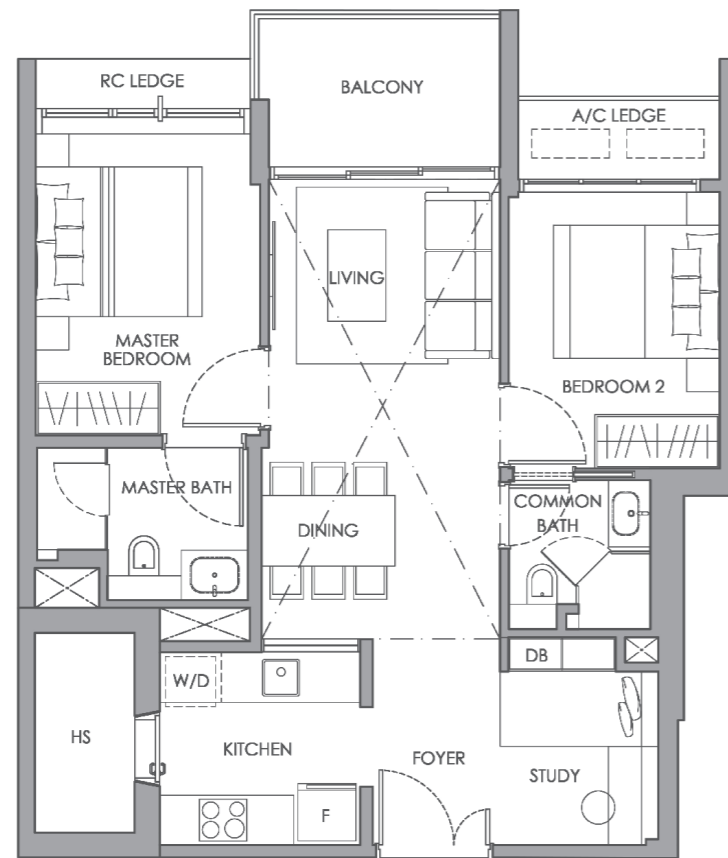


2-Bedroom Premium Penthouse

Type A4 PH

92 SQ M / 990 SQ FT

#05-18

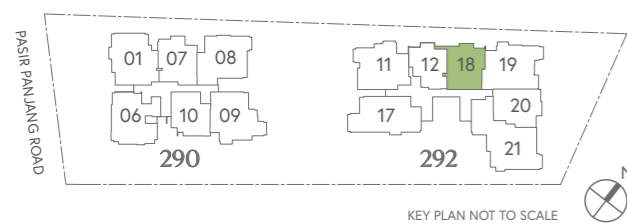
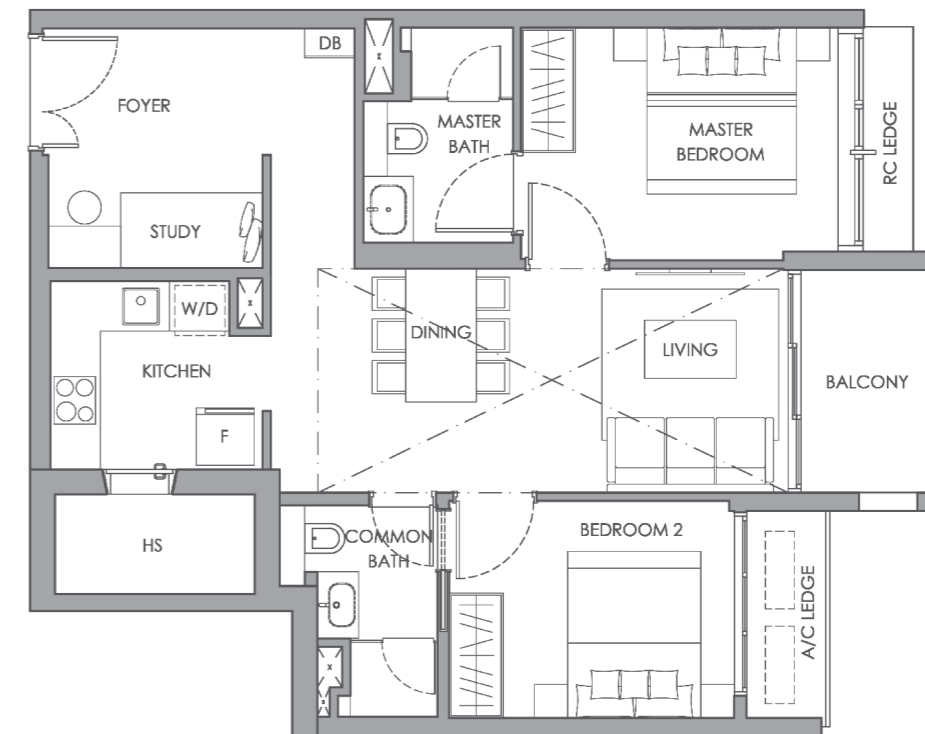


2-Bedroom Premium Penthouse

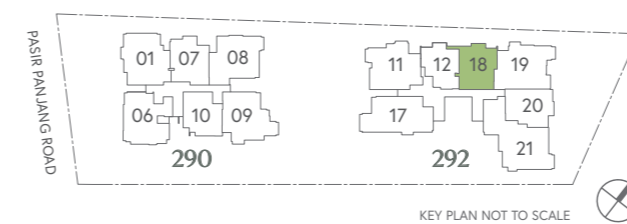
Type A5 PH

96 SQ M / 1033 SQ FT

#05-20



- LEGEND**
- F - Fridge Space
 - W/D - Washer Cum Dryer
 - DB - Distribution Board Box
 - WC - Water Closet
 - HS - Household Shelter
 - A/C LEDGE - Air-Con Ledge
 - RC LEDGE - Reinforced Concrete Ledge (Excluded from strata area)
 - Service Void Space (Excluded from strata area)



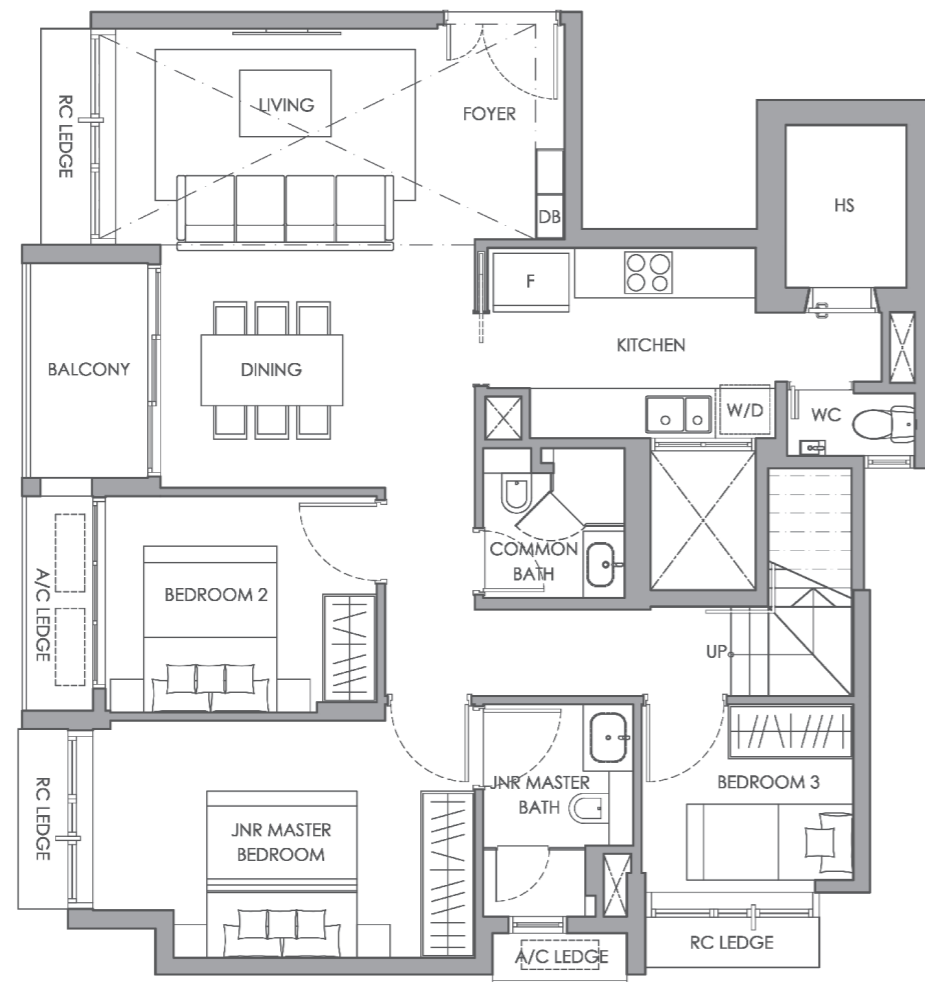
- LEGEND**
- F - Fridge Space
 - W/D - Washer Cum Dryer
 - DB - Distribution Board Box
 - WC - Water Closet
 - HS - Household Shelter
 - A/C LEDGE - Air-Con Ledge
 - RC LEDGE - Reinforced Concrete Ledge (Excluded from strata area)
 - Service Void Space (Excluded from strata area)

4-Bedroom Penthouse

Type B1 PH

158 SQ M / 1701 SQ FT

#05-06



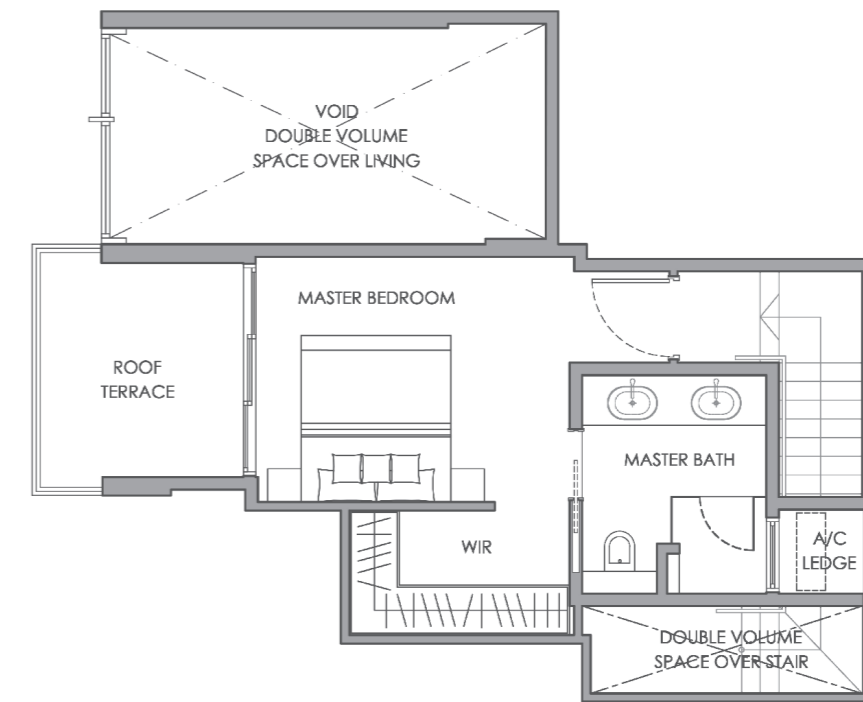
LOWER PLAN

4-Bedroom Penthouse

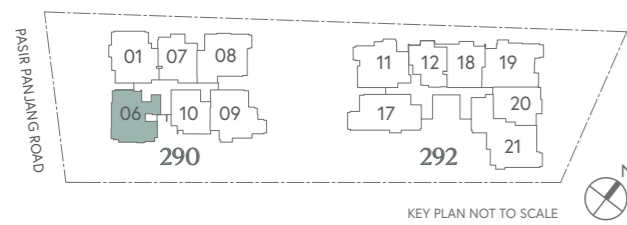
Type B1 PH

158 SQ M / 1701 SQ FT

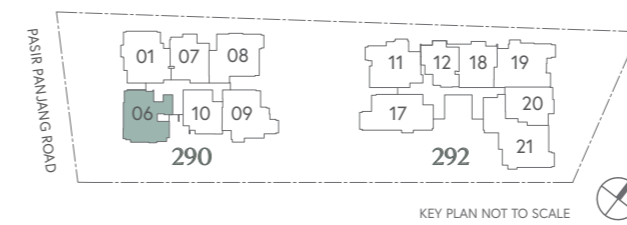
#05-06



UPPER PLAN



- LEGEND**
- F - Fridge Space
 - W/D - Washer Cum Dryer
 - DB - Distribution Board Box
 - WC - Water Closet
 - HS - Household Shelter
 - A/C LEDGE - Air-Con Ledge
 - RC LEDGE - Reinforced Concrete Ledge (Excluded from strata area)
 - Service Void Space (Excluded from strata area)



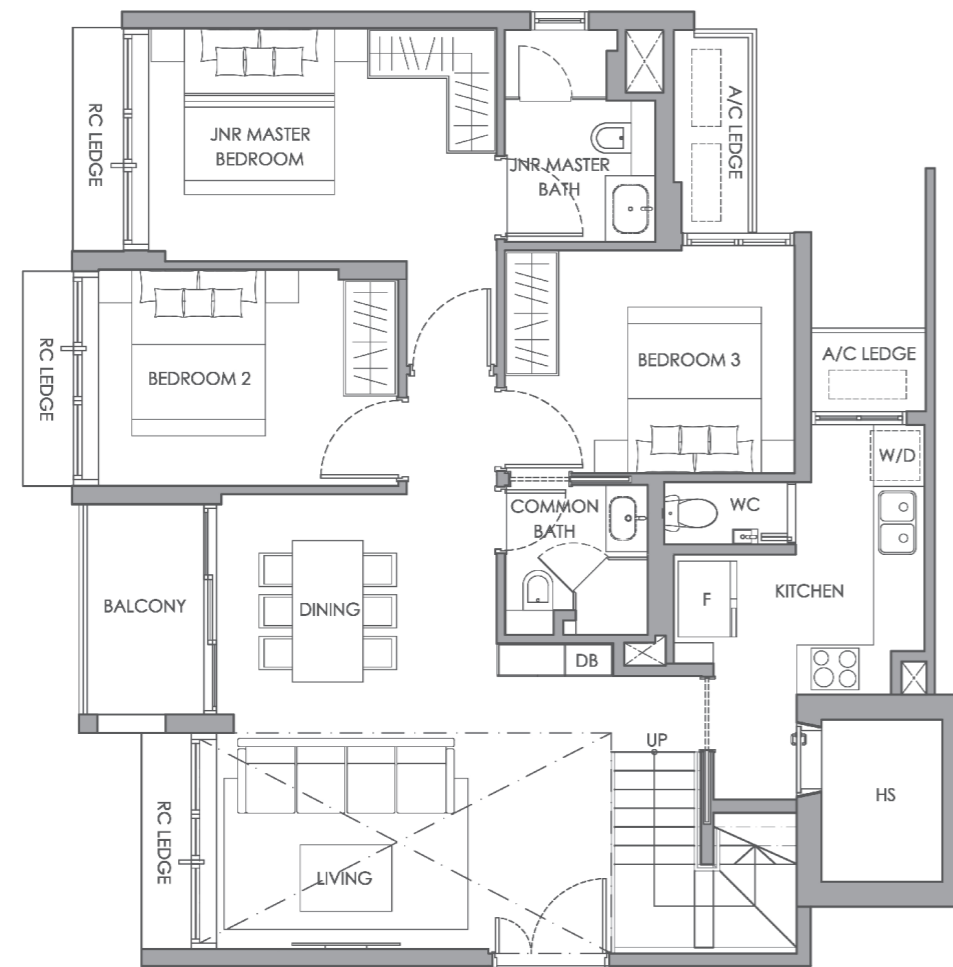
- LEGEND**
- F - Fridge Space
 - W/D - Washer Cum Dryer
 - DB - Distribution Board Box
 - WC - Water Closet
 - HS - Household Shelter
 - A/C LEDGE - Air-Con Ledge
 - RC LEDGE - Reinforced Concrete Ledge (Excluded from strata area)
 - Service Void Space (Excluded from strata area)

4-Bedroom Penthouse

Type B2 PH

155 SQ M / 1668 SQ FT

#05-01



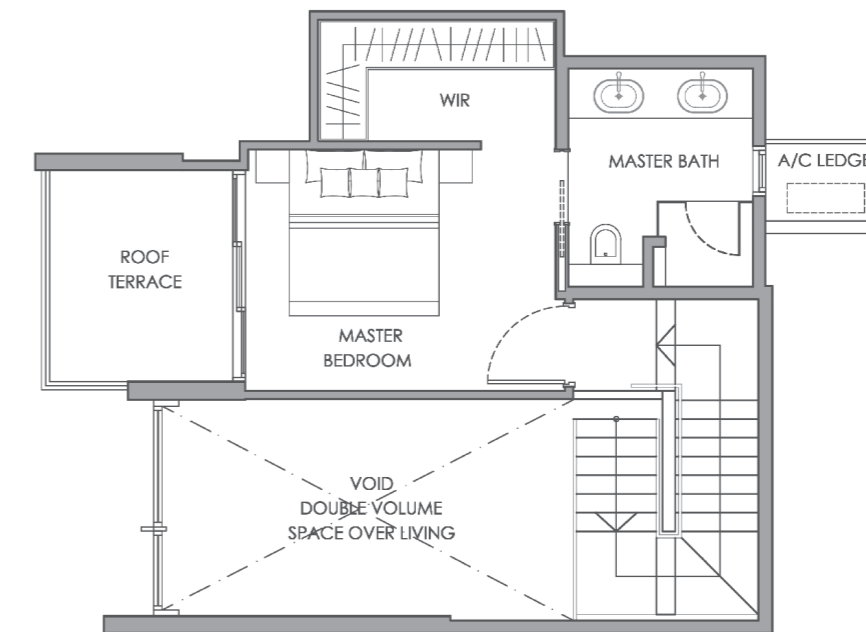
LOWER PLAN

4-Bedroom Penthouse

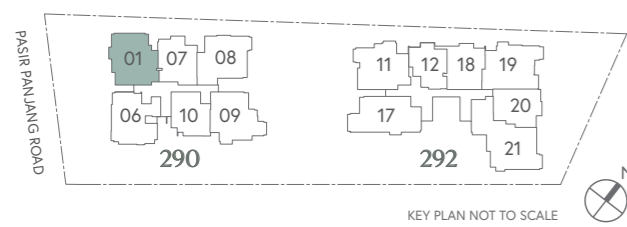
Type B2 PH

155 SQ M / 1668 SQ FT

#05-01



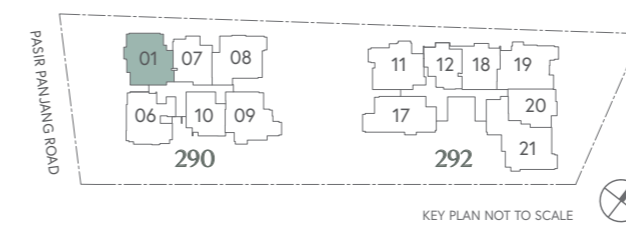
UPPER PLAN



KEY PLAN NOT TO SCALE



- | | | |
|---------------|--------------------------|--|
| LEGEND | | |
| F | - Fridge Space | A/C LEDGE - Air-Con Ledge |
| W/D | - Washer Cum Dryer | RC LEDGE - Reinforced Concrete Ledge (Excluded from strata area) |
| DB | - Distribution Board Box | |
| WC | - Water Closet | |
| HS | - Household Shelter | |



KEY PLAN NOT TO SCALE



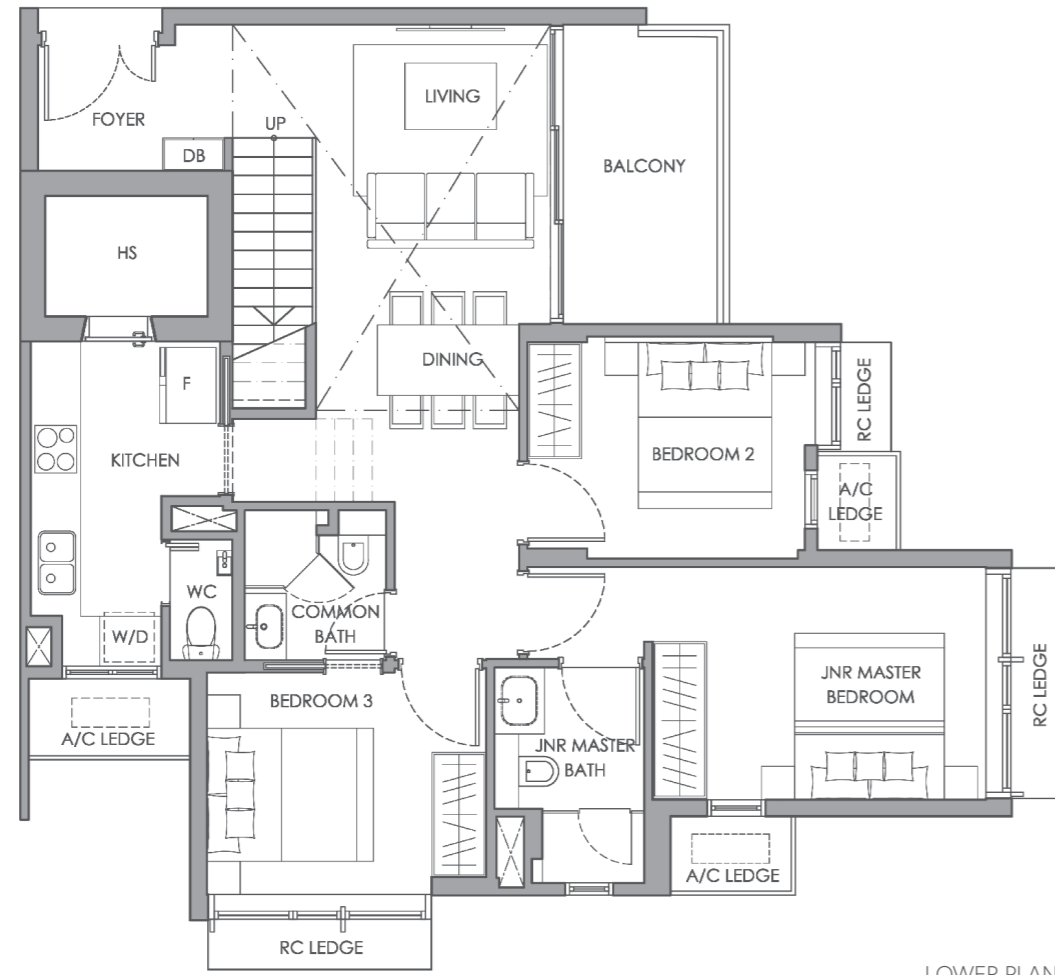
- | | | |
|---------------|--------------------------|--|
| LEGEND | | |
| F | - Fridge Space | A/C LEDGE - Air-Con Ledge |
| W/D | - Washer Cum Dryer | RC LEDGE - Reinforced Concrete Ledge (Excluded from strata area) |
| DB | - Distribution Board Box | |
| WC | - Water Closet | |
| HS | - Household Shelter | |

4-Bedroom Penthouse

Type B3 PH

154 SQ M / 1658 SQ FT

#05-09



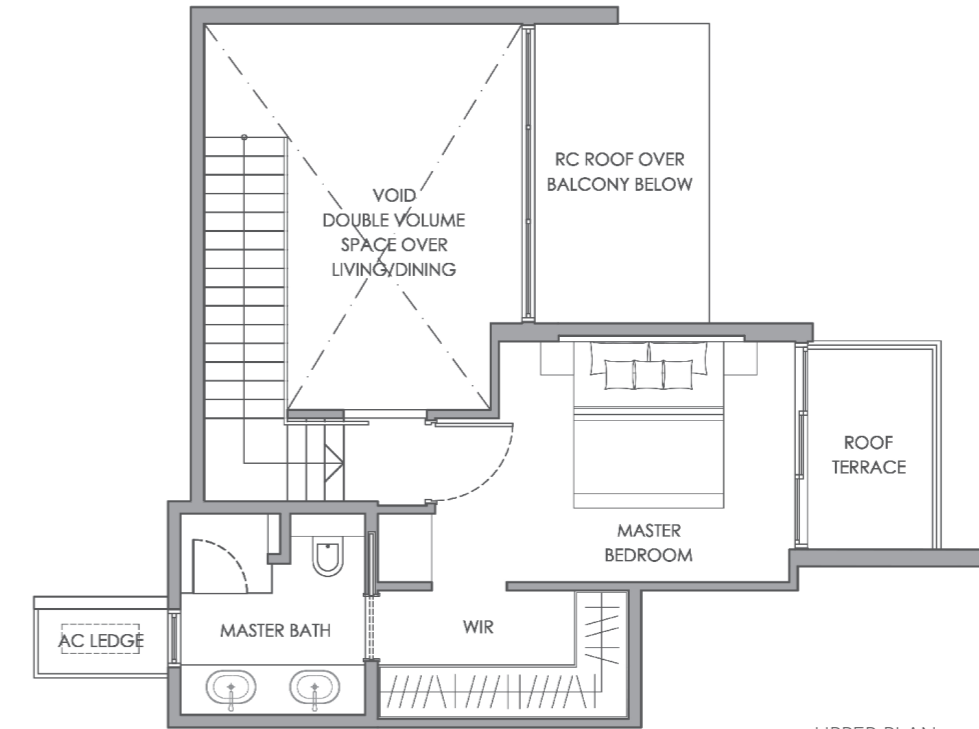
LOWER PLAN

4-Bedroom Penthouse

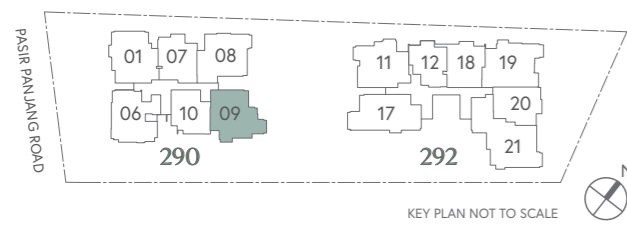
Type B3 PH

154 SQ M / 1658 SQ FT

#05-09



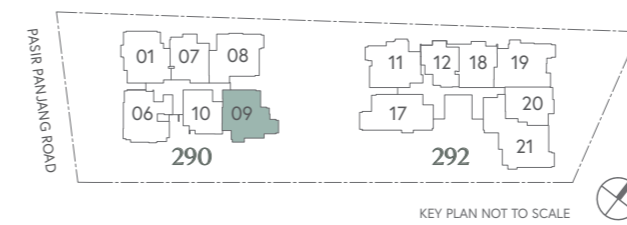
UPPER PLAN



KEY PLAN NOT TO SCALE



- | | | |
|---------------|--------------------------|-----------------------------|
| LEGEND | | |
| F | - Fridge Space | A/C LEDGE |
| W/D | - Washer Cum Dryer | RC LEDGE |
| DB | - Distribution Board Box | - Air-Con Ledge |
| WC | - Water Closet | - Reinforced Concrete Ledge |
| HS | - Household Shelter | (Excluded from strata area) |
| | | - Service Void Space |
| | | (Excluded from strata area) |



KEY PLAN NOT TO SCALE



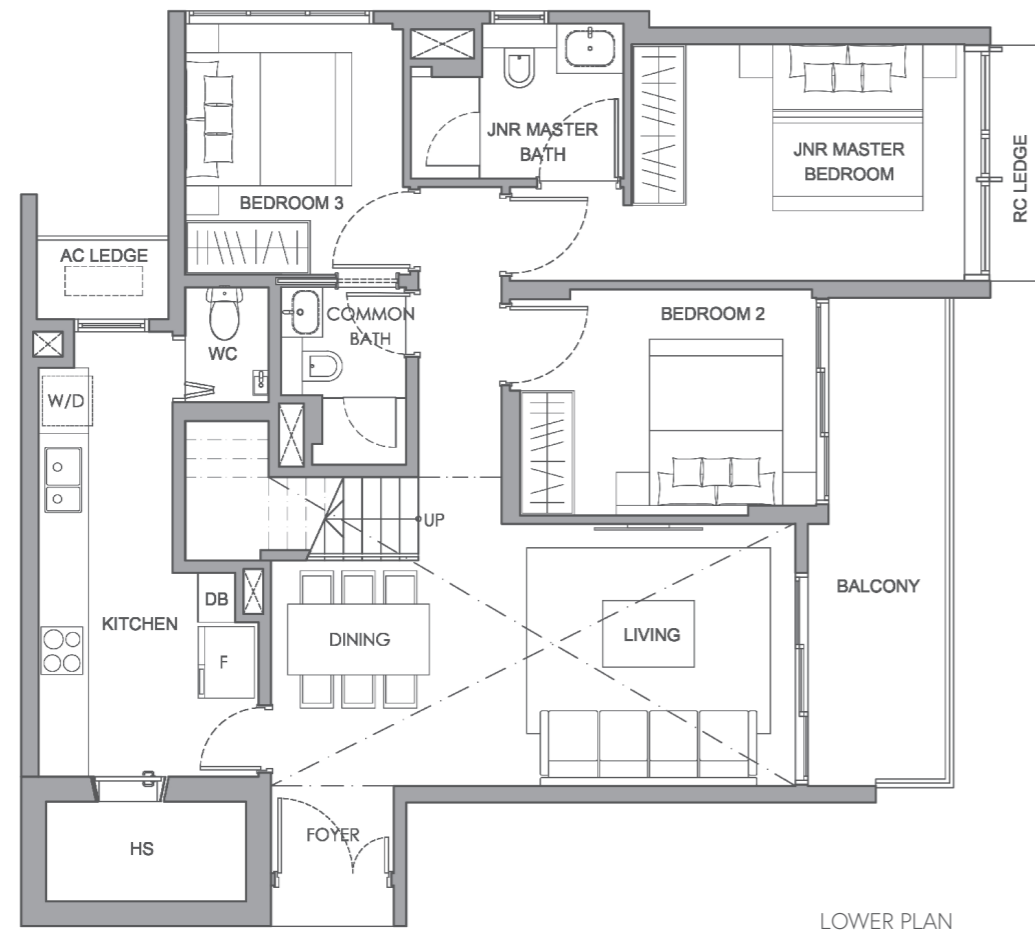
- | | | |
|---------------|--------------------------|-----------------------------|
| LEGEND | | |
| F | - Fridge Space | A/C LEDGE |
| W/D | - Washer Cum Dryer | RC LEDGE |
| DB | - Distribution Board Box | - Air-Con Ledge |
| WC | - Water Closet | - Reinforced Concrete Ledge |
| HS | - Household Shelter | (Excluded from strata area) |
| | | - Service Void Space |
| | | (Excluded from strata area) |

4-Bedroom Penthouse

Type B4 PH

165 SQ M / 1776 SQ FT

#05-08



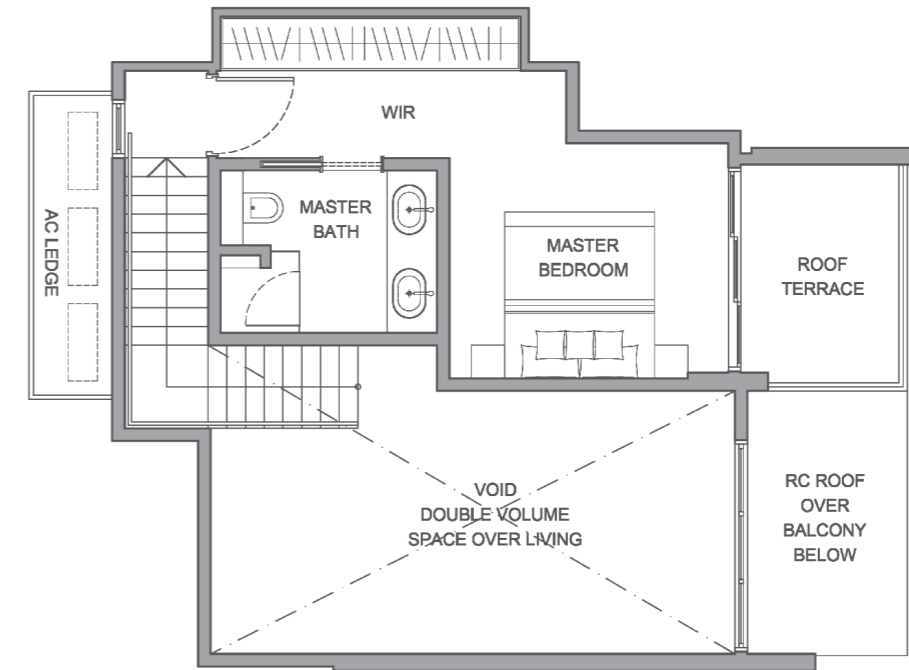
LOWER PLAN

4-Bedroom Penthouse

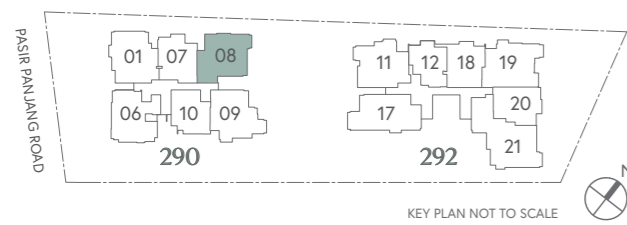
Type B4 PH

165 SQ M / 1776 SQ FT

#05-08



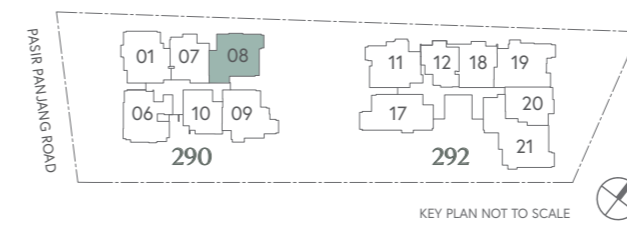
UPPER PLAN



KEY PLAN NOT TO SCALE



- | | | |
|---------------|--------------------------|-----------------------------|
| LEGEND | | |
| F | - Fridge Space | A/C LEDGE |
| W/D | - Washer Cum Dryer | RC LEDGE |
| DB | - Distribution Board Box | - Air-Con Ledge |
| WC | - Water Closet | - Reinforced Concrete Ledge |
| HS | - Household Shelter | (Excluded from strata area) |
| | | - Service Void Space |
| | | (Excluded from strata area) |



KEY PLAN NOT TO SCALE



- | | | |
|---------------|--------------------------|-----------------------------|
| LEGEND | | |
| F | - Fridge Space | A/C LEDGE |
| W/D | - Washer Cum Dryer | RC LEDGE |
| DB | - Distribution Board Box | - Air-Con Ledge |
| WC | - Water Closet | - Reinforced Concrete Ledge |
| HS | - Household Shelter | (Excluded from strata area) |
| | | - Service Void Space |
| | | (Excluded from strata area) |

4-Bedroom Penthouse

Type B5 PH

159 SQ M / 1711 SQ FT

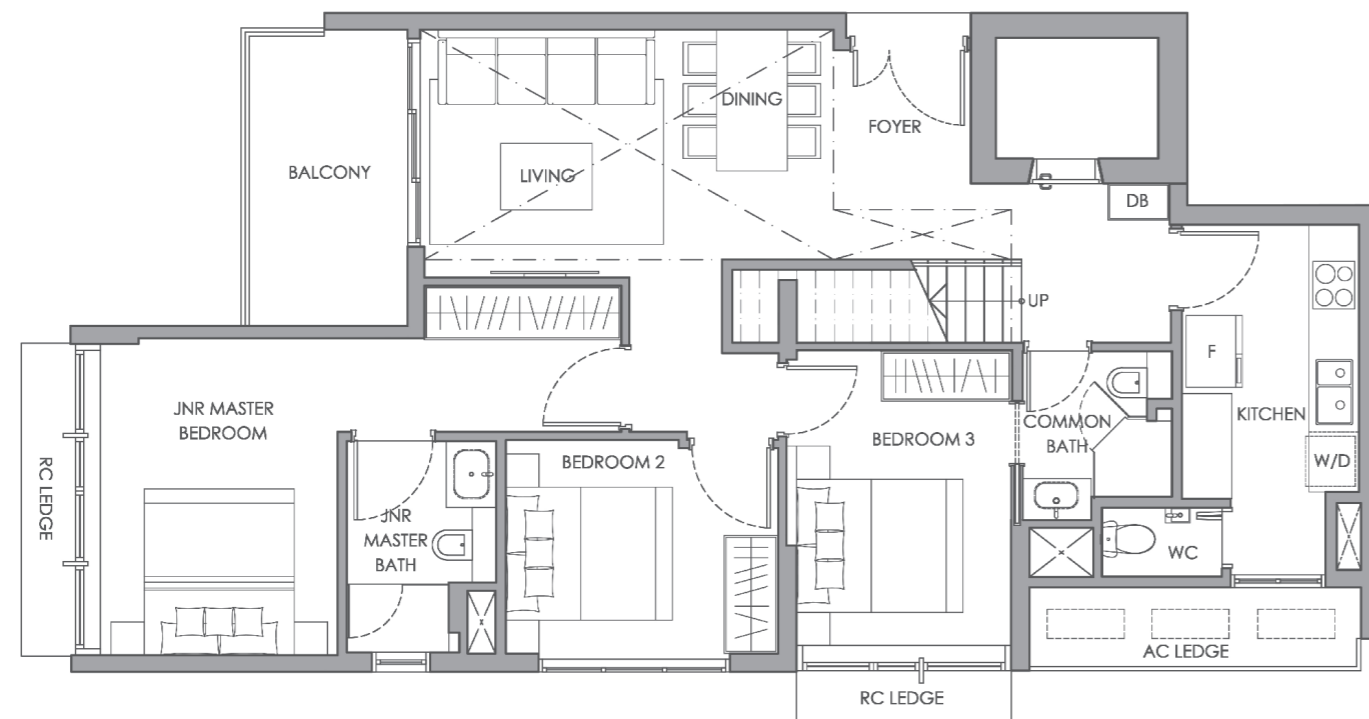
#05-17

4-Bedroom Penthouse

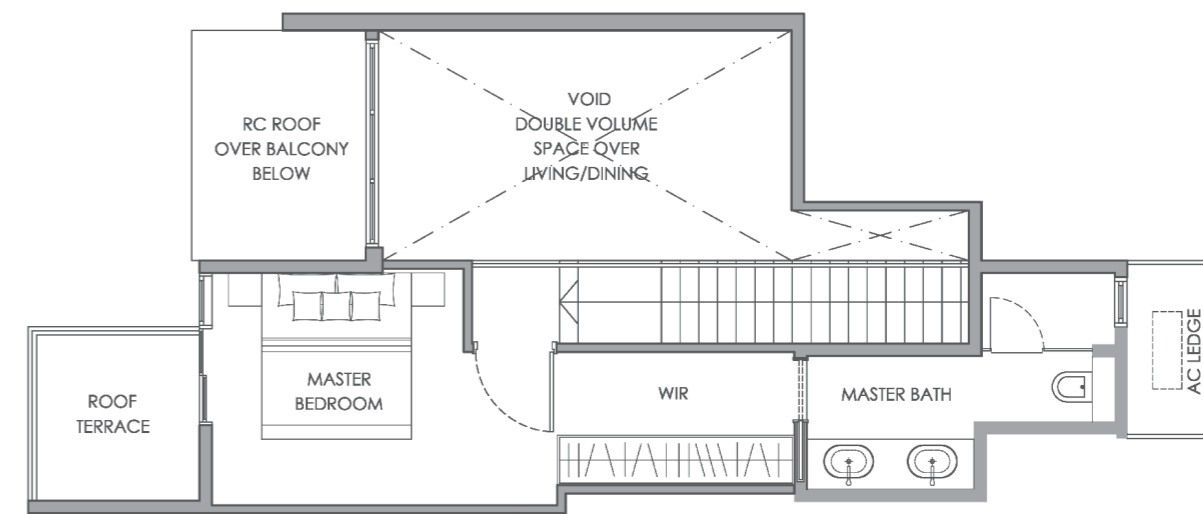
Type B5 PH

159 SQ M / 1711 SQ FT

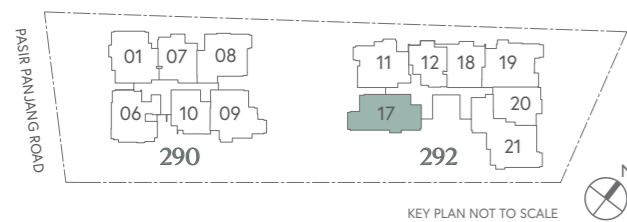
#05-17



LOWER PLAN



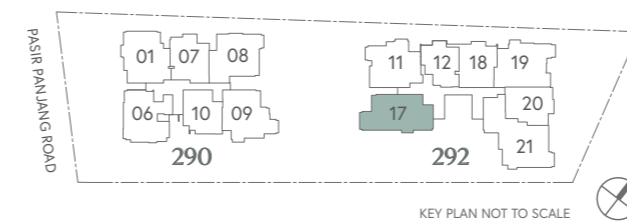
UPPER PLAN



KEY PLAN NOT TO SCALE



- | | | |
|---------------|--------------------------|-----------------------------|
| LEGEND | | |
| F | - Fridge Space | A/C LEDGE |
| W/D | - Washer Cum Dryer | RC LEDGE |
| DB | - Distribution Board Box | - Air-Con Ledge |
| WC | - Water Closet | - Reinforced Concrete Ledge |
| HS | - Household Shelter | (Excluded from strata area) |
| | | - Service Void Space |
| | | (Excluded from strata area) |



KEY PLAN NOT TO SCALE



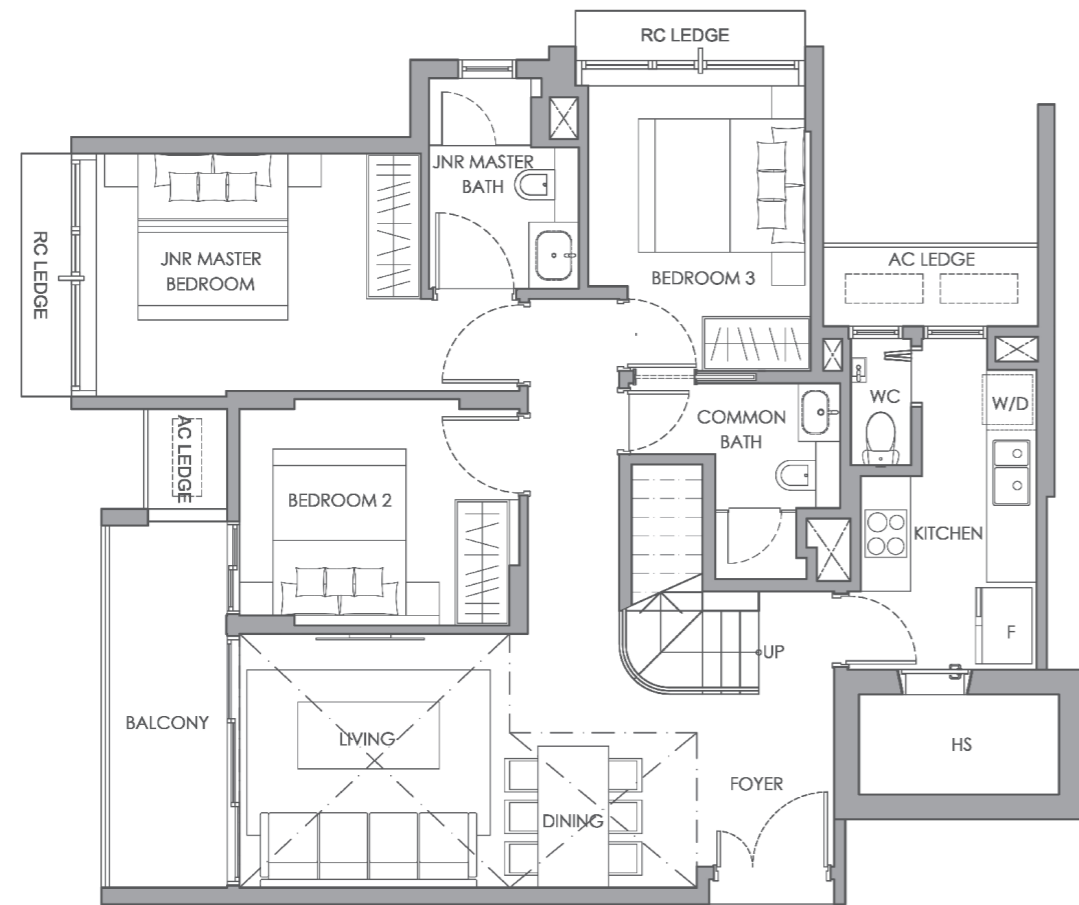
- | | | |
|---------------|--------------------------|-----------------------------|
| LEGEND | | |
| F | - Fridge Space | A/C LEDGE |
| W/D | - Washer Cum Dryer | RC LEDGE |
| DB | - Distribution Board Box | - Air-Con Ledge |
| WC | - Water Closet | - Reinforced Concrete Ledge |
| HS | - Household Shelter | (Excluded from strata area) |
| | | - Service Void Space |
| | | (Excluded from strata area) |

4-Bedroom Penthouse

Type B6 PH

153 SQ M / 1647 SQ FT

#05-11



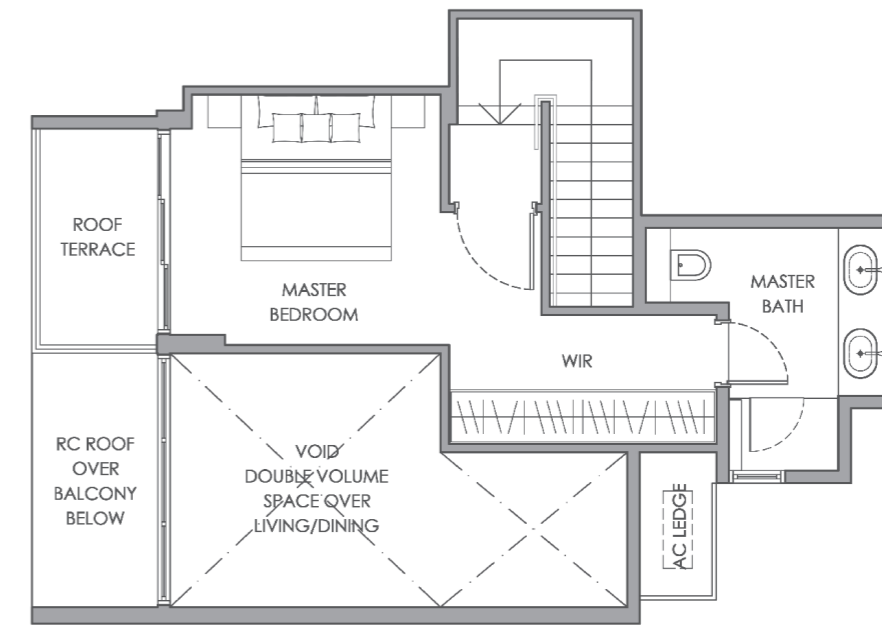
LOWER PLAN

4-Bedroom Penthouse

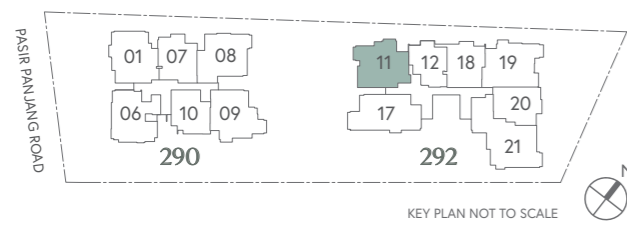
Type B6 PH

153 SQ M / 1647 SQ FT

#05-11



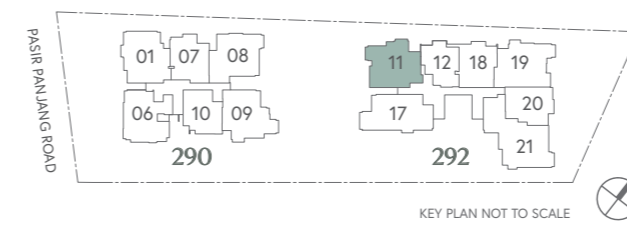
UPPER PLAN



KEY PLAN NOT TO SCALE



- LEGEND**
- F - Fridge Space
 - W/D - Washer Cum Dryer
 - DB - Distribution Board Box
 - WC - Water Closet
 - HS - Household Shelter
 - A/C LEDGE - Air-Con Ledge
 - RC LEDGE - Reinforced Concrete Ledge (Excluded from strata area)
 - Service Void Space (Excluded from strata area)



KEY PLAN NOT TO SCALE



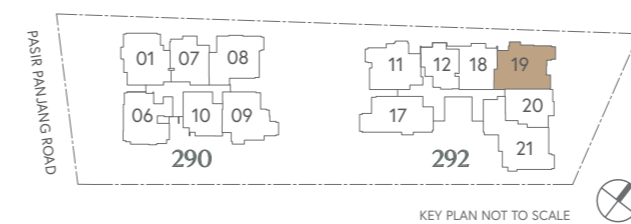
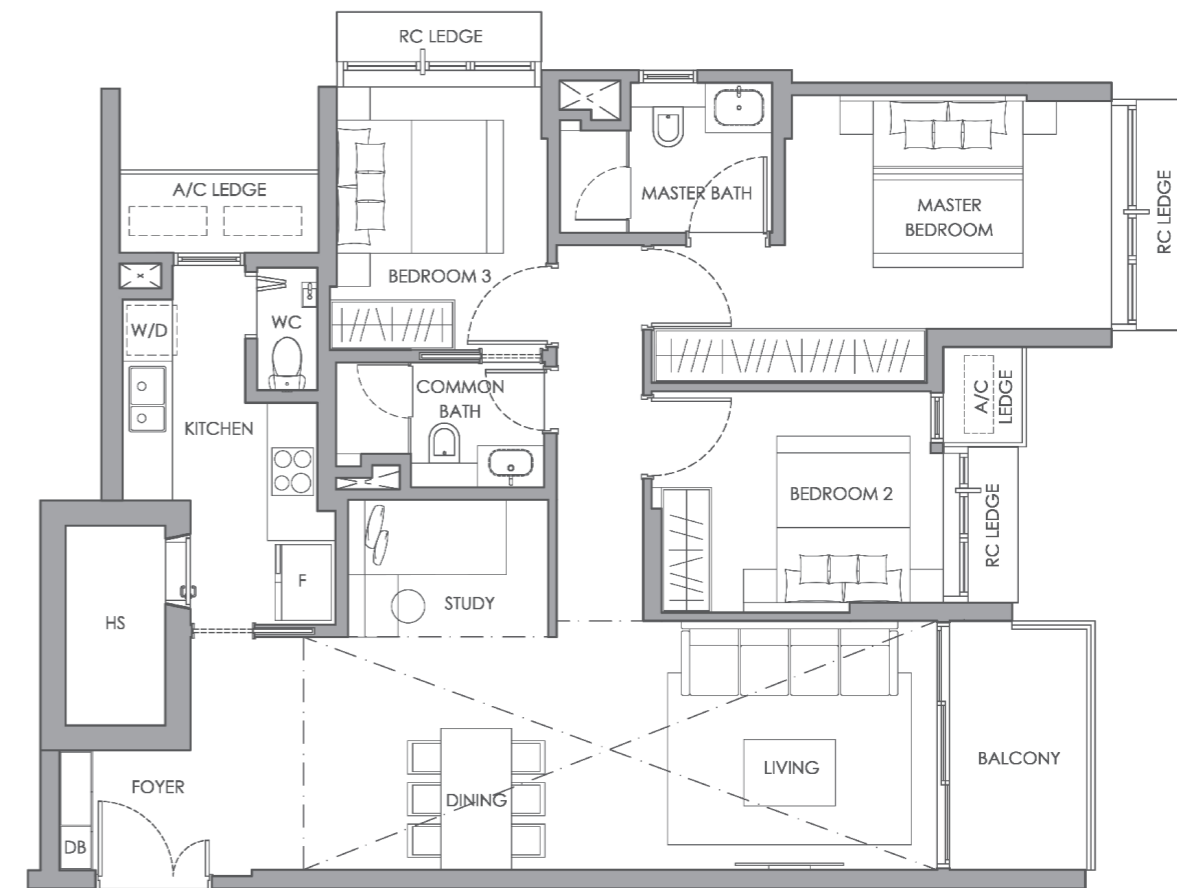
- LEGEND**
- F - Fridge Space
 - W/D - Washer Cum Dryer
 - DB - Distribution Board Box
 - WC - Water Closet
 - HS - Household Shelter
 - A/C LEDGE - Air-Con Ledge
 - RC LEDGE - Reinforced Concrete Ledge (Excluded from strata area)
 - Service Void Space (Excluded from strata area)

3-Bedroom Premium Penthouse

Type B7 PH

134 SQ M / 1442 SQ FT

#05-19

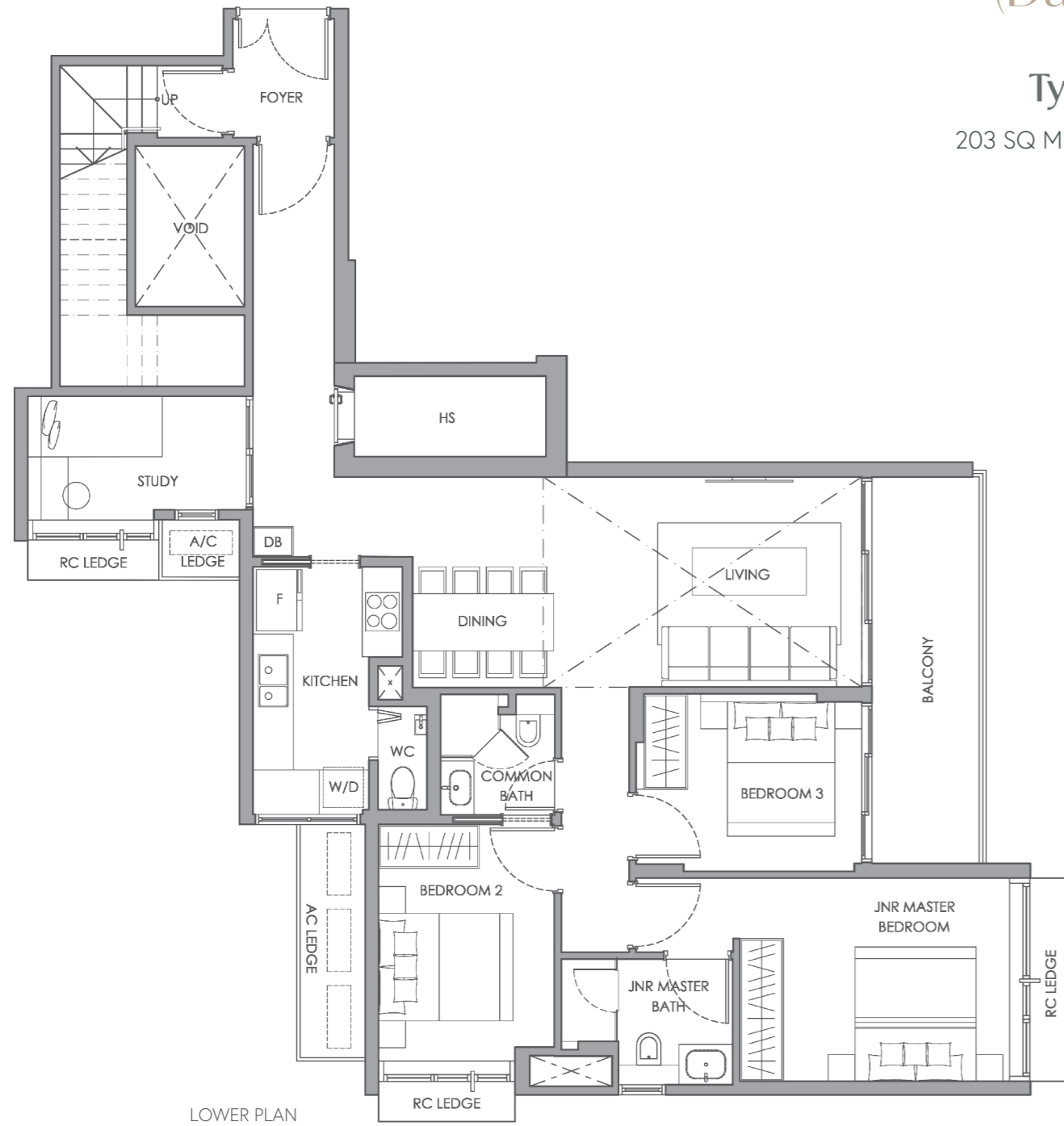


- LEGEND
- F - Fridge Space
 - W/D - Washer Cum Dryer
 - DB - Distribution Board Box
 - WC - Water Closet
 - HS - Household Shelter
 - A/C LEDGE - Air-Con Ledge
 - RC LEDGE - Reinforced Concrete Ledge (Excluded from strata area)
 - Service Void Space (Excluded from strata area)

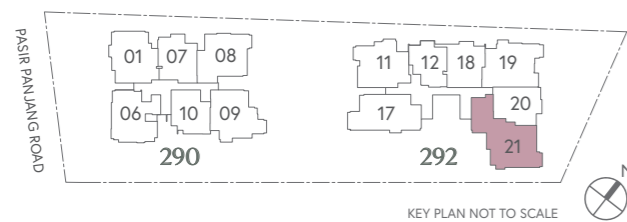
4-bedroom Premium Penthouse (Dual-Key)

Type C1 PH

203 SQ M / 2185 SQ FT
#05-21



LOWER PLAN



KEY PLAN NOT TO SCALE

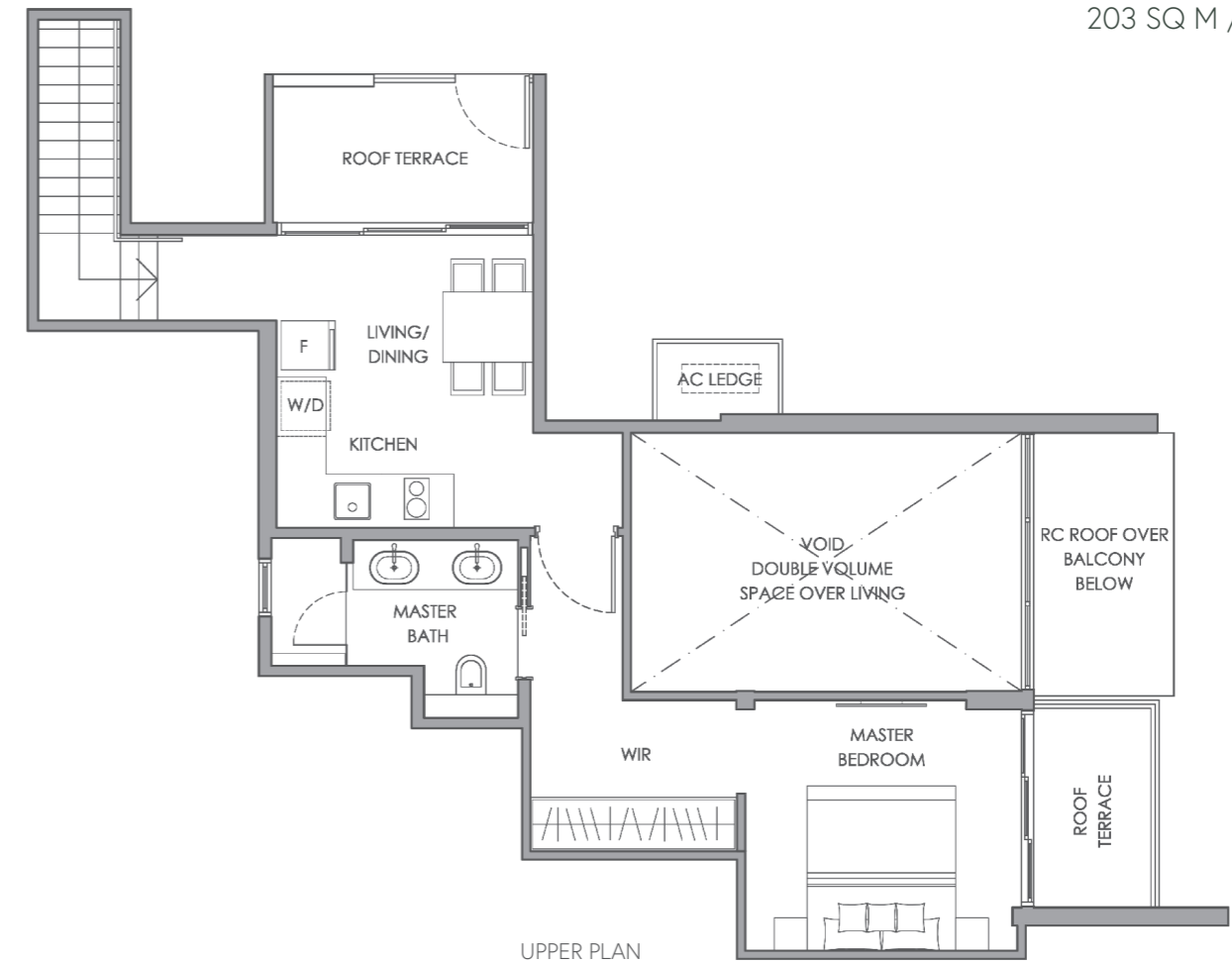


LEGEND		A/C LEDGE	- Air-Con Ledge
F	- Fridge Space	RC LEDGE	- Reinforced Concrete Ledge (Excluded from strata area)
W/D	- Washer Cum Dryer		- Service Void Space (Excluded from strata area)
DB	- Distribution Board Box		
WC	- Water Closet		
HS	- Household Shelter		

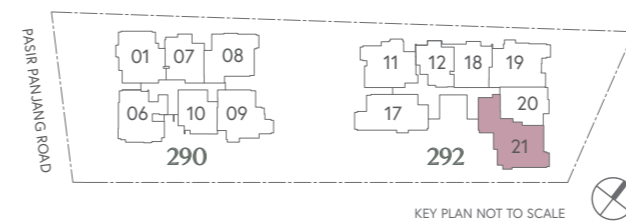
4-bedroom Premium Penthouse (Dual-Key)

Type C1 PH

203 SQ M / 2185 SQ FT
#05-21



UPPER PLAN



KEY PLAN NOT TO SCALE



LEGEND		A/C LEDGE	- Air-Con Ledge
F	- Fridge Space	RC LEDGE	- Reinforced Concrete Ledge (Excluded from strata area)
W/D	- Washer Cum Dryer		- Service Void Space (Excluded from strata area)
DB	- Distribution Board Box		
WC	- Water Closet		
HS	- Household Shelter		



Based in Singapore, FRX Capital is an award-winning boutique developer affiliated to Tong Eng Group and Hong How Group. Our team brings over 100 years of combined experience covering development, construction, design and capital markets.

FRX Capital thrives on forming partnerships to unlock real estate opportunities and create lasting value. While our influence spans the globe, our commitment to excellence remains rooted in Singapore. Our efforts towards building excellence has been acknowledged through numerous accolades such as the 2023 Top Ten Developers Award from BCI Central and 2023 Top Landed Developer from EdgeProp.



DEVELOPER
FRX CAPITAL PTE LTD

ARCHITECT
PARK + ASSOCIATES PTE LTD

PROJECT MANAGER
HONG HOW PROJECTS PTE LTD

LANDSCAPE DESIGN
SALD PTE LTD (SALAD DRESSING)

STRUCTURAL ENGINEER
ERSS CONSULTANTS PTE LTD

M&E ENGINEER
DELTA CREST PTE LTD

QUANTITY SURVEYOR
1MH & ASSOCIATES

CREATIVE
DEEPOCKET BRANDING & DESIGN PTE LTD

www.theshillshore.com.sg

Developer: Hillside View Development Pte. Ltd. • Licence Number of the Housing Developer: Housing Developer's Licence Number C1450 • Tenure of Land: Estate in Fee Simple
• Encumbrance: Mortgage in Favour of Hong Leong Finance Limited • Expected Date of Vacant Possession: 30 June 2027 • Expected Date of Legal Completion: 30 June 2030
• Location of the Housing Project: 292 Pasir Panjang Road Singapore comprised in Lot 5130C of Mukim 03

DISCLAIMER Please be advised that while all reasonable care has been taken in preparing this digital advertisement, the Developer shall not be held liable for any inaccuracies or omissions. This includes, but is not limited to, any variations arising from any change in facts or circumstances occurring after the publication date of this advertisement. All statements, information, plans, and specifications presented in this digital advertisement are current as of the time of publication and are subject to such modifications as may be required by the Developer and its architects and/or as required or approved by the relevant authorities after the publication date of this advertisement and shall not form part of any offer or contract nor constitute any warranty by the Developer. Please note that all visual representations, including digital images, models, illustrations, photographs, drawings, displays, and art renderings, are intended to portray only an artist's impression of the development and shall not be considered as factual representations. All plans and layouts are not drawn to scale and are subject to any amendments required by the Developer and/or approved by the relevant authorities and notified to the Developer after the date of publication. All floor areas and other measurements provided in this advertisement are approximate measurements only and are subject to final survey. The Sale and Purchase Agreement shall constitute the entire agreement between the Developer and the Purchaser and supersedes and cancels in all respects all prior representations, warranties, promises, inducements, statements of intent, expressions of opinion, whether written or oral, made by the Developer and/or the Developer's agent(s) which are not embodied in the Sale and Purchase Agreement, unless approved by the Controller of Housing and expressly agreed upon in writing between the parties involved.

