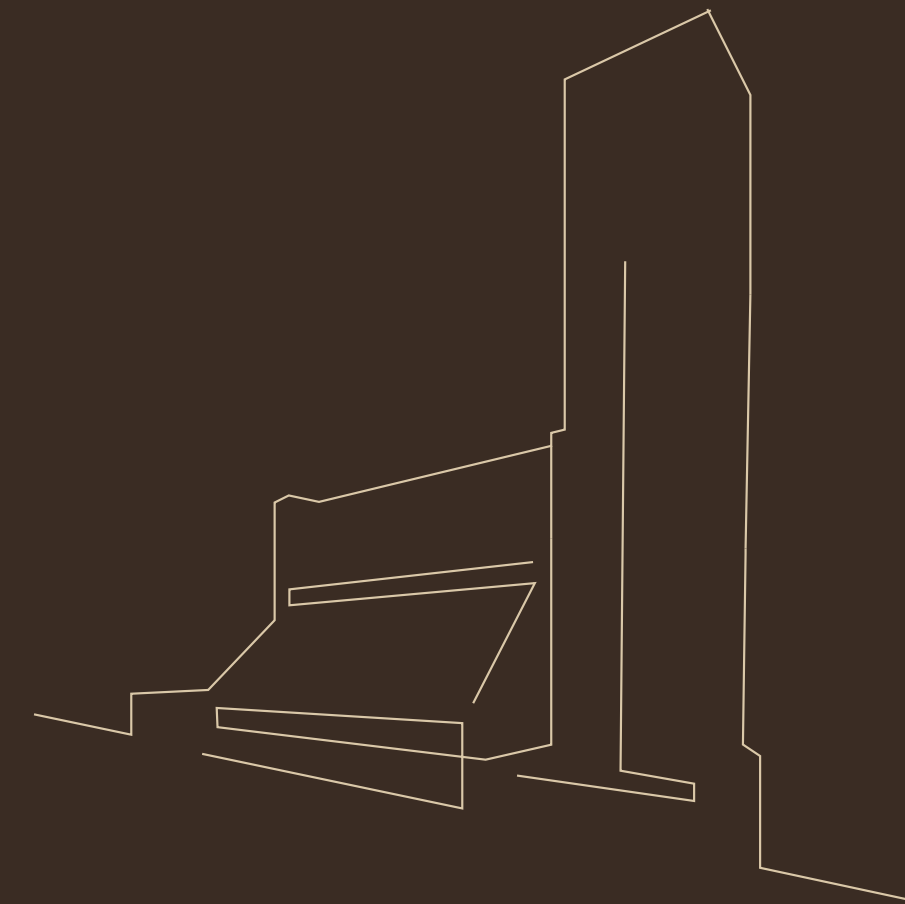
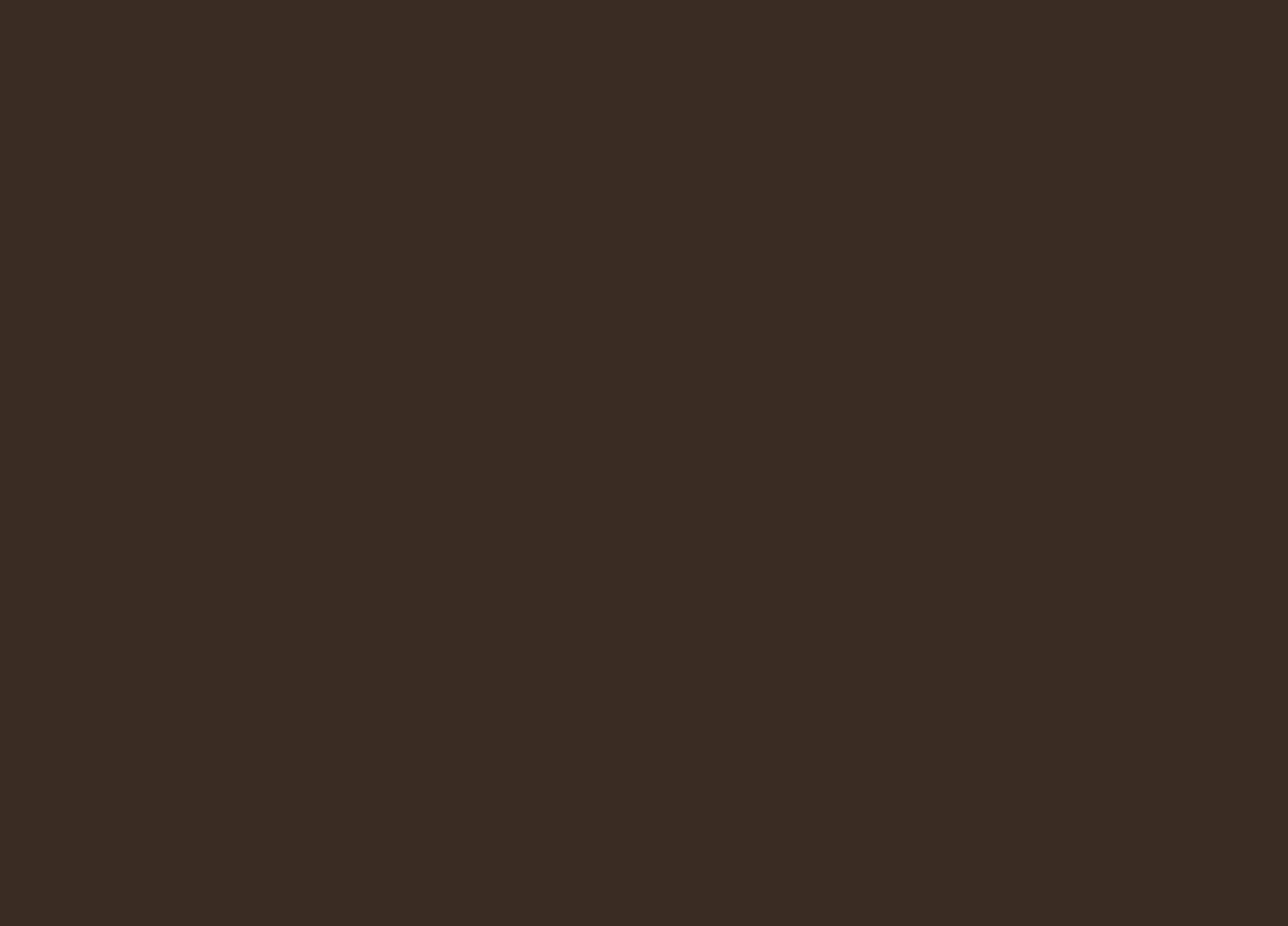




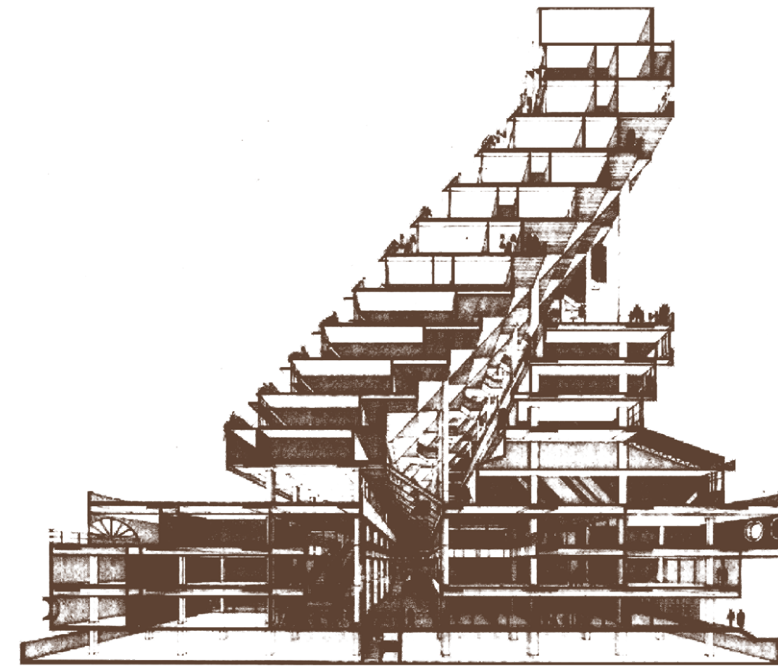
AUREA

A VISIONARY HOME  
FOR LIFE'S CHERISHED  
MOMENTS





## Visionary Then

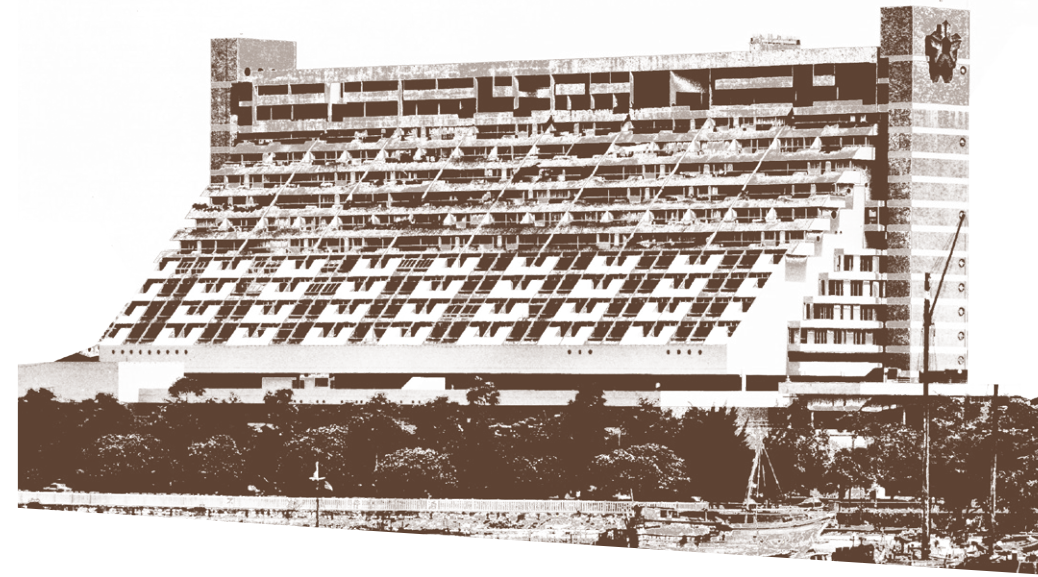


### 1960s

#### A MODERNIST ICON ENVISIONED

The original vision for a new mixed-use development was laid out. Golden Mile Complex was to reflect a bold vision for the future, exemplifying Singapore's foresight, fortitude and can-do spirit in the early independence years.

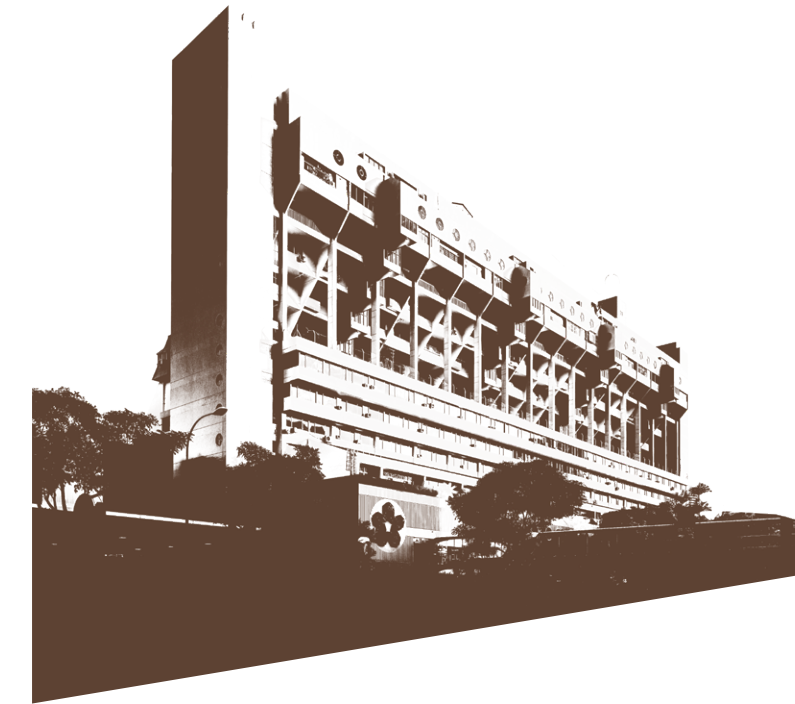
## Visionary Now



### 1973

#### A PLACE TO LIVE, WORK, PLAY

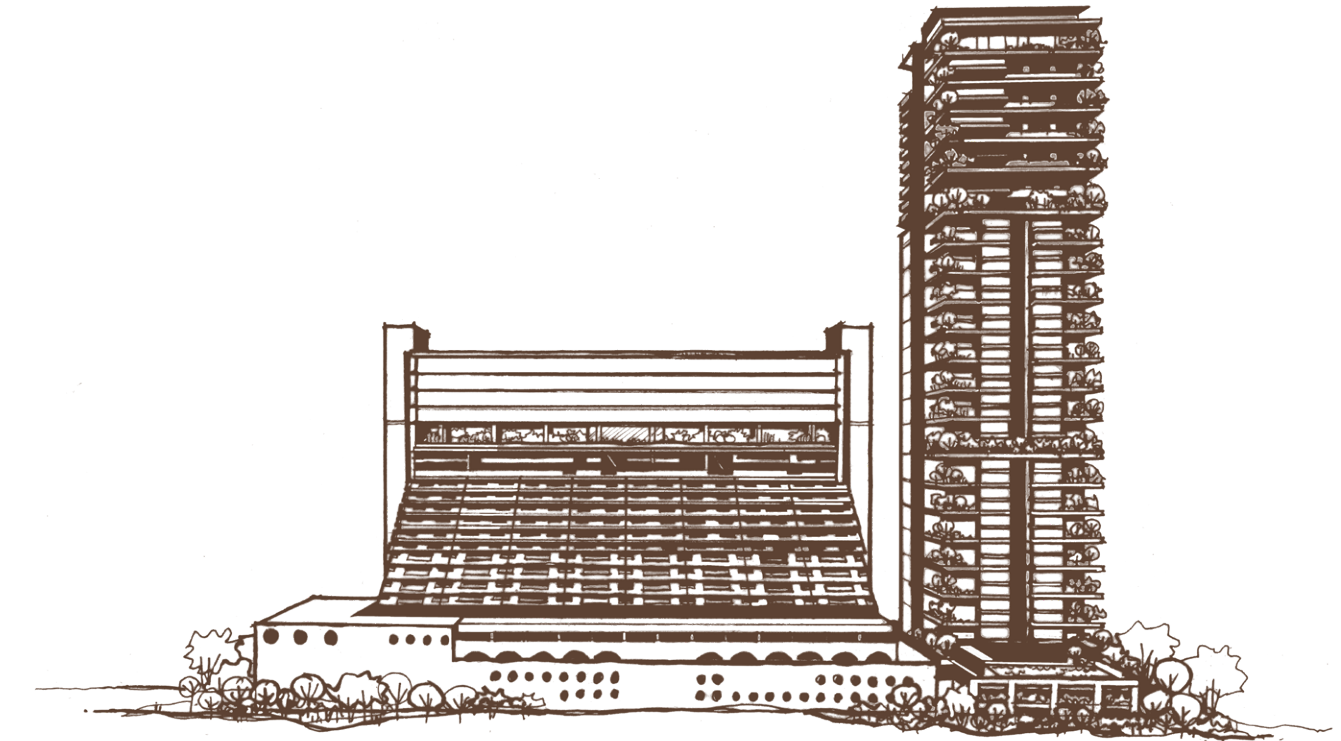
Conceived as a linear city, Golden Mile Complex was one of Asia's first mixed-use developments, where people could live, work, and play within the same complex. With panoramic views of the waterfront, all 64 apartments were sold within a month of its launch — three years before the project's completion.



### 2021

#### A NATIONAL TREASURE CONSERVED

Golden Mile Complex was gazetted as a conserved building, becoming the first large-scale strata-titled building in Singapore to receive such a recognition. This marks a momentous milestone, presenting a rare opportunity to rejuvenate a national icon while preserving its distinctive Brutalist architecture.



### 2024

#### A NEW CHAPTER UNFOLDS

Golden Mile Complex will be sensitively restored and rejuvenated as The Golden Mile, offering retail, offices, and medical suites. A new residential tower named Aurea will be built next to The Golden Mile, extending a legacy that will forever be etched in history. A home of prestigious and iconic stature, Aurea will embrace the same spirit of progress, offering an exciting live-work-play lifestyle in the city.



**BOLD  
EXPRESSIVE  
TIMELESS**

## VISION

Inspired by the pioneering spirit of a generation that dared to envision a brighter future, Aurea boldly reimagines the city living experience of tomorrow. Located next to The Golden Mile, Aurea's exclusive residences open up to sweeping panoramas of Marina Bay, Kallang River, and beyond, ready to welcome a new chapter.

Drawing from the legacy of the Golden Mile Complex, Aurea features iconic design and architectural motifs, such as the oculus windows, which have been thoughtfully carried over and reinterpreted. The entrance presents an elevated lobby, enhancing the sense of arrival and setting a distinguished tone for the experience within. This grand space, with its high ceilings and expansive volume, creates a welcoming atmosphere from the moment one steps in.

Aurea reimagines integrated urban living with a contemporary vision. The development features vertical terraces and sweeping sea-front balconies, complemented by lush sky gardens on the exterior. The interiors harmonise elegance and functionality, with light-filled spaces and serpentine hallways blending luxurious comforts with the dynamic energy of downtown Singapore.

Diverse amenities, including infinity pools, spas, climbing wall, sky gym, dining areas and clubhouse, are designed to cater to various lifestyle needs. The development's layout and shared spaces are meticulously planned to encourage interaction among residents, promoting a sense of community and connectedness.

Aurea embodies a lifestyle where history meets modernity and the tranquillity of nature complements the vibrancy of city life. It is a residence that offers a refined lifestyle, blending subtle elegance with modern living for an enriching experience.

DP ARCHITECTS  
DEVELOPMENT ARCHITECT





# BEYOND, THE WORLD PLAYS

LOCATION

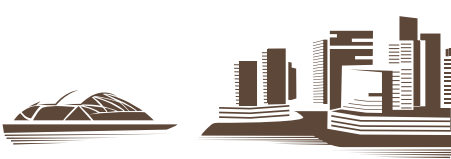
# A City in the City

Aurea offers a prime location with easy access to Marina Bay, the Central Business District, and Orchard Road. In the vicinity, ongoing rejuvenation of areas like Beach Road and the Ophir-Rochor Corridor brings a dynamic blend of leisure, cultural, and entertainment options, making it a vibrant hotspot where live, work, and play seamlessly converge.



### SHOPPING MALLS

Explore a range of premier shopping destinations, with easy access to Suntec City, Bugis shopping district, Raffles City, Marina Bay Sands and Orchard Road shopping belt.



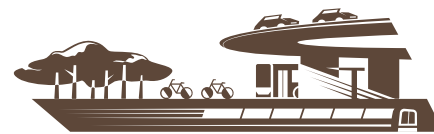
### TRANSFORMATION & REJUVENATION

Kallang Alive, which includes the Singapore Sports Hub, will be revitalised into a vibrant, community-centric hub, while the areas around the Kallang River and Kampong Bugis, as well as Beach Road and Ophir-Rochor, will be developed into lively, modern districts.



### DOWNTOWN CORE

Located in Singapore's vibrant Downtown Core, the city's financial and cultural heart.



### TRANSPORT & CONNECTIVITY

Travel with ease via the MRT, major highways including the ECP, MCE, and KPE, and the upcoming North-South Corridor, ensuring effortless connectivity across the city.



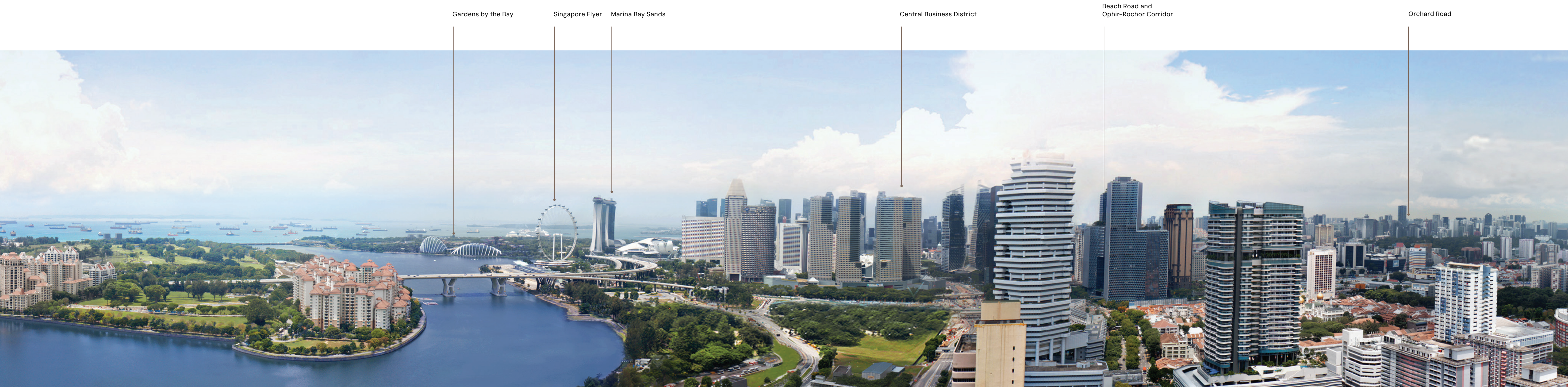
### PARKS & GARDENS

Relax in nature at Kallang Riverside Park, where you can enjoy water sports and stroll along picturesque trails. Or unwind among the lush greenery of Gardens by the Bay for a serene escape from urban living.



# Primed for Growth

The surroundings of Aurea are poised to become the new focal point of tremendous growth. With the redevelopment of Beach Road and the Ophir-Rochor Corridor, this part of Downtown Core will witness the rise of gleaming skyscrapers, attracting corporate offices, residences, hotels, and next-generation retail experiences.



Gardens by the Bay

Singapore Flyer

Marina Bay Sands

Central Business District

Beach Road and Ophir-Rochor Corridor

Orchard Road

# Transformation & Rejuvenation

A new wave of development is also taking place towards Kallang. Kampong Bugis is slated for redevelopment into a vibrant, car-lite, community-centric lifestyle destination, while the Kallang Alive precinct is envisioned to be a world-class sporting and entertainment hub.

Bugis

North-South Corridor



Kampong Bugis

Kallang Riverside Park

Nicolli Highway

Singapore National Stadium

Kallang Leisure Park

Kallang Alive





WITHIN,  
A WORLD  
RESIDES



Artist's Impression

## Key Facilities

LEVEL 33

### Sky

Sky Infinity, Sky Gym, The Boulder

LEVEL 17

### Lounge

Lounge Cove, The Dining Room, Viewing Point

LEVEL 3

### Resort

Grand Infinity, The Retreat, Sizzle, Sear, Spas

LEVEL 2

### Arrival

Link bridge to The Golden Mile

## LEVEL 2

## Arrive Home in Style



Artist's Impression

With its striking elegance, the elevated drop-off at Level 2 offers an impressive sense of arrival. The interplay of light, water, and the oculus-inspired designs, along with the skylight, creates an inviting ambience to welcome you home.

## LEVEL 3

## Poolside Tranquillity



Artist's Impression

Nestled within Grand Infinity, a 25-metre pool, are unique sunken lounges designed as idyllic spots to soak up the tranquil atmosphere and relax in serene surroundings.

## LEVEL 3

## An Urban Escape



Artist's Impression

The Retreat is a refined clubhouse with views of the Grand Infinity and lush gardens. Whether you are working, winding down, or hosting friends, there are spaces to cater to every need.

## LEVEL 17

## Elevated Dining



Artist's Impression

Savour a memorable dining experience at The Dining Room, where an intimate indoor setting offers panoramic views of the city skyline. Dine high above the vibrant streets, pairing delectable cuisine with stunning vistas.

LEVEL 33

## View at the Top

Up on Level 33, the Sky Infinity presents unmatched panoramas stretching from Marina Bay to Kallang River. Bask in the pool or glide through cool waters with Singapore's famous skyline as your backdrop, making every moment unforgettable.

PANORAMIC VIEW

## New Heights of Luxury

Experience exquisite refined living at Aurea, where breathtaking views of the bay or the city await. Corner units provide even more expansive vistas, while the exclusive Sky Villa Collection presents stunning panoramic views accented by sky gardens.



## Prestige & Signature Collection



Discover the ideal blend of efficiency and elegance in Aurea's thoughtfully designed 2-, 3- and 4-bedroom units. Each space is meticulously planned to maximise functionality, offering a seamless flow that enhances everyday living. Enjoy breathtaking views from select homes, where every detail is crafted to provide a serene urban retreat.

## Sky Villa Collection



From Level 34 onwards, experience elevated living in the Sky Villa Collection featuring luxurious 5-bedroom residences and two exclusive penthouses — a stunning duplex and an extraordinary triplex — crowning the top floors. Each Sky Villa unit offers private lift access, generously designed interiors, and expansive balconies, perfect for indulging in panoramic views of the city skyline and the serene bay.

## A Renewed Icon for the Generations to Come



An adaptive redevelopment that integrates retail spaces, offices, and medical suites. With architectural features carefully restored with integrity and renewed for longevity. The Golden Mile is an urban landmark that reclaims its rightful place in the district.

Artist's Impression

## The Golden Mile

LEVEL 19-22 Crown Offices

LEVEL 18 Sky Garden

LEVEL 16-17 Enterprise Offices

LEVEL 10-15 Loft Mezzanine

LEVEL 9 Sky Terrace

LEVEL 4-8 Loft Suites, Loft Executive,  
Loft Mezzanine, Flagship Offices

LEVEL 3 Medical Suites and Flagship Offices  
Architecture Centre

LEVEL 1-2 Retail and F&B

BASEMENT Carpark



Artist's Impression

## The Developers



### PERENNIAL HOLDINGS

Perennial Holdings Private Limited (“Perennial Holdings”) is an integrated real estate and healthcare company headquartered in Singapore. As a real estate owner, developer, and manager, Perennial Holdings focuses strategically on large-scale integrated transit-oriented developments and mixed-use developments, many of which are ‘live, work, and play’ one-stop destinations. As a healthcare services owner, operator and manager, Perennial Holdings focuses on hospitals and medical centres, healthcare hubs, and eldercare and senior housing. The company has a presence in China, Singapore, Malaysia, and Indonesia, with a real estate portfolio spanning approximately 80 million square feet in total gross floor area and a healthcare portfolio across 14 cities in China with over 23,000 beds.

Landmark integrated developments within its portfolio include Hangzhou West High Speed Railway (HSR) Integrated Development, comprising the tallest building in Hangzhou, Beijing Tongzhou Integrated Development, comprising the second tallest office building in Tongzhou District, and Perennial International Healthcare and Business City (Tianjin South HSR Station), the world’s first integrated eldercare, medical care and hospitality HSR transit-oriented development, in China; The Skywaters, Singapore’s tallest building and first supertall skyscraper (above 300m), and Capitol Singapore, a heritage icon comprising three conservation buildings, in Singapore; as well as The Light City, a mega waterfront destination with the largest convention centre in Penang, Malaysia.

PERENNIALHOLDINGS.COM



### FAR EAST ORGANIZATION

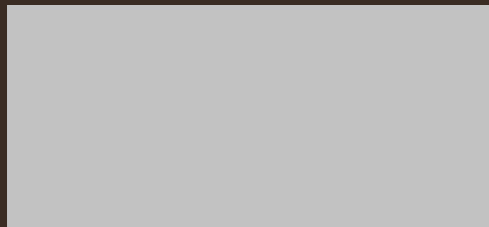
Far East Organization is a Christian Enterprise, which develops real estate and operates businesses by serving with grace, love, integrity and honesty. Together with its Hong Kong-based sister company Sino Group, they are one of Asia’s largest real estate groups, with operations in Singapore, Malaysia, Australia, Japan, China (Mainland and Hong Kong), Taiwan and USA. Far East Organization is the largest private property developer in Singapore, having developed over 780 developments across all segments of real estate including 55,000 private homes in Singapore since its establishment in 1960. It includes three listed entities: Far East Orchard Limited, Far East Hospitality Trust and Yeo Hiap Seng Limited. Far East Organization is the winner of 14 FIABCI World Prix d’Excellence awards, the highest honour in international real estate.

FAREAST.COM

# PRESERVING WHAT IS MOST PRIZED

# NURTURING WHAT IS MOST PRECIOUS

SCAN FOR MORE INFORMATION



**CREDIT**

Images of Golden Mile Complex — DP Architects

**DISCLAIMER**

The information contained herein is subject to change and cannot form part of an offer or contract. While every reasonable care has been taken in providing this information, the developer or its agent cannot be held responsible for any inaccuracies. Whilst we believe the contents of this brochure to be correct and accurate at time of print, they are not to be regarded as statements or representations of fact. Illustrations in the brochure are artist's impressions, which serve only to give an approximate idea of the project. All artist's impressions and all plans are subject to any amendments as may be approved by the relevant authorities. The developer reserves the right to modify any parts of the building prior to project completion as approved or directed by the Planning Authorities or as the owner deems fit in its sole discretion. The developer reserves any and all copyright, design and other proprietary rights in and to this document (or any part thereof) including all or any part of the information, material or artwork contained therein. Unless otherwise expressly agreed to in writing, this document or any part thereof may not be copied, modified, distributed, reproduced or reused without the express written consent of the developer.

Developer: GMC Property Pte. Ltd. • Licence No.: C1497 • Tenure: 99 years commencing from 18 Nov 2024 • Encumbrances: (i) Caveat LJ/464772B in favour of OVERSEA-CHINESE BANKING CORPORATION LIMITED. (ii) Mortgage executed in escrow in favour of OVERSEA-CHINESE BANKING CORPORATION LIMITED. • Land Description: Lots 622M and 623W (formerly known as 435A PT) of Town Subdivision 15 at Beach Road • Expected Vacant Possession Date: 31 Mar 2030 • Expected Legal Completion Date: 31 Mar 2033

